



# Wine tourism & Breweries





# Symbols

## Wine tourism & Breweries

On the cover (top to bottom and left to right):

- Barrel control at the Domaine Raquillet in Mercurey  
© Domaine François Raquillet
- Wine tasting at the Domaine de La Luolle in Moroges  
© Domaine de La Luolle
- The Givry Vins cellar in Givry Tourist Office  
© Rozenn Krebel
- The Côte Chalonnaise vineyard © Julien Piffaut



Parking



Animals  
accepted



Animals  
non accepted



Free wifi



Credit card  
accepted



Vacation vouchers  
accepted



Tickets Restaurants  
accepted

## Labels & Welcome signs



### Qualité Tourisme

This mark acknowledges the quality of the services provided by these establishments, enabling you to choose with confidence.



### Vignobles & Découvertes

This national mark, created in 2009, indicates places where activities, accommodation and eating places that are linked to vineyards and their natural and cultural environments can be found.



### Accueil Vélo

A national quality mark that guarantees a warm welcome and services adapted for cyclists at establishments that are less than 5k from a cycle route.



### Tourisme & Handicap

Establishment guaranteeing an efficient and adapted welcome to people with motor, mental, hearing or visual disabilities.



### Aventures Mômes

Sites displaying this mark have signed a quality charter with the Saône-et-Loire departmental tourist agency. They are engaged in offering a welcome to families, suitable prices, equipment and surroundings adapted to children from 4 to 14 years.



Organic farming

**Chalon-sur-Saône** Tourist Office  
4 place du Port Villiers  
71100 CHALON-SUR-SAÔNE  
officedetourisme@achalon.com  
+33 (0)3 85 48 37 97

**Saint-Léger-sur-Dheune**  
Tourist Office  
13 rue du Port  
71510 SAINT-LÉGER-SUR-DHEUNE  
+33 (0)3 85 91 60 37

**Givry** Tourist Office  
13 place de la Poste  
71640 GIVRY  
tourismegivry@achalon.com  
+ 33 (0)3 85 44 43 36

**Rully** Tourist Office  
Maison éclusière  
2 impasse du Canal  
71150 RULLY  
+33 (0)3 85 91 53 55

For more  
information  
visit:

**www.  
achalon  
com**

## Cellars and wine merchants partners

**CHALON-SUR-SAONE** - 2, PROMENADE SAINTE-MARIE  
**Maison des Vins de la Côte Chalonnaise**  
**CHALON-SUR-SAONE**

**03 85 41 64 00**  
<https://www.maisondesvins-chalon.com>  
White, Rosé, Red, Sparkling,

An association created in 1982 to promote all the appellations of the Côte Chalonnaise.

**GIVRY** - 13 PLACE DE LA POSTE BUREAU D'INFORMATION  
TOURISTIQUE-GIVRY  
**Givry Vins GIVRY**

**03 85 44 43 36**  
<https://www.achalon.com>  
White, Red, Sparkling

Come and discover the wines of the Givry appellation. More than 30 wines are available at producer prices.

**MERCUREY** - PLACE GENAPPE 101, GRANDE RUE  
**Caveau Divin Mercurey MERCUREY**

**03 85 45 22 96**  
<https://www.mercurey.com>  
White, Red, Sparkling, Sparkling rosé wine

The Caveau Divin Mercurey offers 64 different wines from the Mercurey appellation for tasting and is a unique and comfortable place.

**CHALON-SUR-SAONE** - 5 RUE DE SAINT-VINCENT  
**L'échoppe Saint-Vincent**

**09 54 74 45 11**  
<https://www.celliersaintvincent.com>

Ophélia welcomes you to the Shop where you will find all the items around the wine. This place will also be dedicated to tastings 2 to 3 times a month

**GIVRY** - 2, PLACE DE L'EGLISE  
**Robe Grenat**

**03 85 44 38 44**  
<http://www.robegrenat.com>

Wine school and sales. Philippe Strauel, passionate about wines for over 20 years, offers services linked to improving your wine knowledge.

**SAINT-MARCEL** - 27 RUE LOUIS-ALPHONSE POITEVIN  
**Mail Boxes Etc**

**09 85 60 84 80**  
<https://www.mbechalon.com>

With MBE Wine, you can send your wine in France and abroad, guaranteeing logistical expertise and respect for your product.

**CHALON-SUR-SAONE** - 14, PLACE SAINT-VINCENT  
QUARTIER HISTORIQUE  
**Cellier Saint-Vincent**

**03 85 48 78 25**  
<http://www.celliersaintvincent.fr>

The cellar's team is there to guide you, region by region, as you travel through the aromas and tastes of a diverse selection of wines.

**CHALON-SUR-SAONE** - 9, RUE PAUL SABATIER  
**La Cave**

**03 85 94 09 17**

A large choice of more than 700 wines, more than 300 spirits (rums, whiskies, gins...), large choice of champagne, foreign wines... Selection of beers

**CHALON-SUR-SAONE** - 9 RUE PASTEUR  
**La Cave des Tonneliers**

**03 58 77 66 01**  
<http://www.lacavedestonneliers.com>

A smiling welcome and tasting all day long from €9. Fine Burgundy wines, artisan beers and delicatessen.

**CHALON-SUR-SAONE** - 3, GRANDE RUE  
**Nicolas**

**03 85 93 46 51**  
<http://www.nicolas.com>

**CHALON-SUR-SAONE** - 36 RUE DE STRASBOURG ILE SAINT  
LAURENT  
**Terroirs & Millésimes**

**03 85 48 48 28**  
<https://terroirs-millesimes.com/>

Our philosophy; share our passion and transmit our expertise. More 1200 wines and spirits. Organic and foreign wines. Tastings in our cellar.

<p><b>CHALON-SUR-SAONE</b> - 26, ROUTE DE LYON</p> <p><b>VinsCie - Vins et Chocolats</b></p> <p> </p>	<p><b>06 18 89 16 43</b></p>	<p>Vins et Chocolats offers you a selection of wines, spirits and regional products, as well as delicious hand-crafted praline snails.</p>
<p><b>CHEILLY-LES-MARANGES</b> - 3A, LE PONT</p> <p><b>La Cave de Cheilly</b></p> <p>   </p>	<p><b>03 85 91 14 51</b></p> <p><a href="http://www.lacavedecheilly.fr">http://www.lacavedecheilly.fr</a></p>	<p>At the Cave de Cheilly, come and discover our range of Burgundy, spirits, wines from all over France and elsewhere, beers and delicatessen products.</p>
<p><b>RULLY</b> - 15 PLACE SAINTE-MARIE</p> <p><b>La Cave de Rully</b></p> <p>  </p>	<p><b>03 85 93 62 90</b></p>	<p>Come and discover our range in Rully and Bouzeron as well as our selection throughout France. Local beers and rosés in the cooler.</p>



# Givry Vins

Explore freely wines  
from the Givry appellation



Sale at producer price

Wine tasting

22 wineries



Domaine Besson

Domaine René Bourgeon

Vignerons de Buxy

Domaine Chofflet

Domaine Danjean-Berthoux

Domaine Deliance

Domaine Desvignes

Domaine Pierre Ducret

Vignerons de Genouilly

Domaine Goubard

Domaine Vincent Lump

Domaine de La Luolle

Domaine Masse

Domaine Laurent Mouton

Domaine Michel Moreau

Domaine Pelletier Hibon

Domaine Pigneret Fils

Domaine Ragot

Domaine La Renarde

Le Chais Saint-Pierre

Domaine Tatraux Jean et Fils

Domaine Thénard

From april 1<sup>st</sup> to sept. 30

Wednesday to sunday:  
10:00am - 1:00pm  
& 3:00pm - 6:30pm

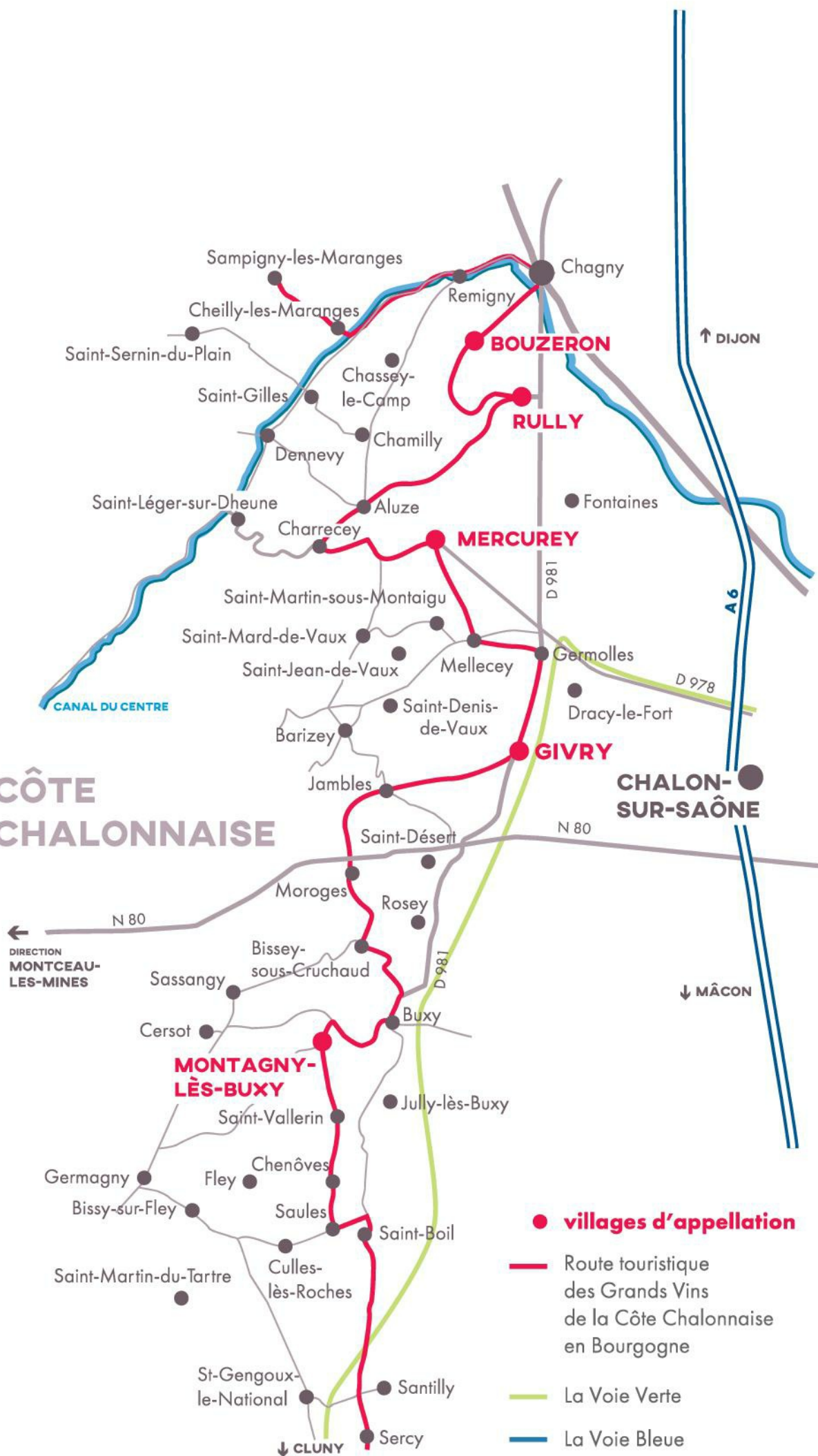
From oct. 1<sup>st</sup> to dec. 31

Friday and saturday:  
10:00am - 1:00pm  
& 3:00pm - 6:30pm  
Sunday: 10:00am - 1:00pm

Grand Chalon Tourist  
Office: Givry Vins Cellar &  
Givry Tourist Office

13 place de la Poste  
71640 GIVRY  
tourismegivry@achalon.com  
+33 (0)3 85 44 43 36

# CÔTE CHALONNAISE





## Wine estates

ALUZE - 9, RUE DES ROCHES PENDANTES

**Les Champs de l'Abbaye ALUZE**



**03 85 45 59 32**

White, Red

Created in 1997, our domain turned immediately towards organic cultivation methods. With the "Champs de l'Abbaye" organic cultivation is a quality factor of the wines in the same way as very low...

BARIZEY - 2 RUE VERGER

**Bertrand Patrick BARIZEY**



**06 13 46 85 99**

<https://www.domainebertrand.com>

White, Red

Winegrowers from father to son since 1911, the Bertrand family cultivates the vines in one of the most beautiful terroirs of the Côte Chalonnaise. Raphaël Bertrand took over the family estate in...

BARIZEY - ROUTE DES CHAMPS DE SEIGLE 6 ROUTE DES CHAMPS DE SEIGLE

**Masse Père et Fils BARIZEY**



**03 85 44 36 73**

<http://domainemasse.fr>

White, Red, Sparkling

Family estate of 13 ha; traditional methods. The wines are harvested manually and matured in oak barrels. Come and discover our production, in a charming wine cellar decorated with old wine-growing...

BOUZERON - 15 RUE SADI CARNOT

**Antoine Reniaume BOUZERON**



**06 23 43 48 78**

<https://www.domaine-antoine-reniaume.fr/>

White, Red

Our estate covers 10 hectares in the Côte Chalonnaise and Côte de Beaune. We work 9 appellations in white and red, and try to preserve our different terroirs as much as possible. Particular attention...

BOUZERON - 6, RUE DE LA FONTAINE

**Chanzy BOUZERON**



**03 85 87 23 69**

<http://www.chanzy.com>

White, Red, Sparkling

This estate has 80 hectares of vines in eight villages on the Côte de Beaune and the Côte Chalonnaise, with five clos and two monopoles, including the only monopole in the Bouzeron Village...

BOUZERON - 3, RUE DES DAMES

**Chaussin Jocelyne BOUZERON**



**03 85 87 09 01**

White, Rosé, Red

A family estate for several generations, located in the heart of the village. We cultivate our vines with respect for the environment and nature: mechanical and organic cultivation (no label, but in...

BOUZERON - RUE DES DAMES

**Les Champs des Thémis BOUZERON**



**06 80 28 79 96**

White, Red

The Champs de Thémis domain was created in 2014. Themis, goddess of Justice and daughter of Gaia (the Earth) and Ouranos (the air, the wind) among the

BUXY - 4, RUE DE LA POMPE

**Cognard Laurent BUXY**



**09 88 08 20 20**

<https://domainecognard.fr>

White, Red, Sparkling, Sparkling rosé wine

The estate is located in Buxy in Burgundy, in the Montagny appellation area, the southern gateway to the Côte Chalonnaise.

CHAMILLY - 7, ALLÉE DU CHÂTEAU

**Château de Chamilly CHAMILLY**



**03 85 87 22 24**

<http://www.chateaudechamilly.com>

White, Red, Sparkling

In the early 19th century, the Desfontaine family acquired the Château de Chamilly, which is located in a verdant valley north of the Côte Chalonnaise, 20 minutes south of Beaune, and 20 minutes west...

CHASSEY-LE-CAMP - LIEU DIT NANTOUX 1, RUE DES ARNAULT

**Moreteaux CHASSEY-LE-CAMP**



**03 85 87 19 10**

<http://www.moreteaux.eu>

White, Rosé, Red, Sparkling, Sparkling rosé wine

A family estate located in the Côte Chalonnaise for three generations, we cultivate nearly 15 hectares of the three Burgundy grape varieties: Aligoté

CHEILLY-LES-MARANGES - 2 RUE SAINT LOUIS MANOIR DE MERCEY

**Berger-Rive CHEILLY-LES-MARANGES**



**03 85 91 13 81**

<https://www.berger-rive.fr>

White, Red

The Domaine Berger-Rive is located on the family estate of Manoir de Mercey, at the southern end of the Côte de Beaune in the village of Cheilly-lès-Maranges, in the heart of the hamlet of Mercey...

**CHEILLY-LES-MARANGES** - 4, RUE DU FOUR MERCEY  
**Bouthenet Jean-François CHEILLY-LES-MARANGES**



**03 85 91 14 29**  
<https://www.domaine-bouthenet-jf.fr>  
 White, Red, Sparkling

A family estate of 11 hectares, which is farmed using sustainable farming methods. We produce white and red wines respecting their terroir and typicity. Our cellar is open every day by appointment....

**CHEILLY-LES-MARANGES** - 10-11, RUE ST-LOUIS HAMEAU DE MERCEY  
**Bouthenet Marc CHEILLY-LES-MARANGES**



**03 85 91 16 51**  
<http://www.domaine-marcbouthenet.com/>  
 White, Red, Sparkling, Sparkling

Several generations of wine-growers have worked this 18-hectare domaine. Hand picking and traditional vinification with elevage in barrels.

**CHEILLY-LES-MARANGES** - 19, ROUTE DE COUCHES  
**Chevrot et Fils CHEILLY-LES-MARANGES**



**03 85 91 10 55**  
<https://www.chevrot.fr>  
 White, Rosé, Red, Sparkling, Sparkling rosé wine

This estate is located in Les Maranges, the southern gateway to the Côte de Beaune, with magnificent views over the vines. We offer tours of the vines and our 18th-century vaulted cellars, along with...

**CHEILLY-LES-MARANGES** - 7, PLACE DE L'EGLISE  
**Dessaugue France CHEILLY-LES-MARANGES**



**03 85 91 13 73**  
<https://www.dessaugue-bourgogne.fr>  
 White, Rosé, Red, Sparkling,

Located at Les Maranges on the Côte-de-Beaune, this family-run estate produces 11 AOP wines. It has been handed down through the generations and today covers some 25 hectares of vine. The wines,...

**CHEILLY-LES-MARANGES** - 6 - 8 PLACE DE LA MAIRIE  
**Domaine Clos Saint Jean CHEILLY-LES-MARANGES**



**03 85 46 66 03**  
<https://www.domaine-clos-saint-jean.com>  
 White, Red, Sparkling

Philippe and Marie-Odile Beudet have taken over a family vineyard. By walking it through the seasons, they know every vine, every shoot.

**CHEILLY-LES-MARANGES** - 1B RUE DU GLACIS  
**Roy Elodie CHEILLY-LES-MARANGES**



**06 10 94 19 04**  
 White, Red

After 11 years spent in Vosne-Romanée, in a beautiful Domaine de la Côte de Nuits, I decided to take over the family vineyards located in the Maranges

**CHEILLY-LES-MARANGES** - 1 PLACE DE LA POSTE  
**Sorine et Fils CHEILLY-LES-MARANGES**



**03 85 87 18 07**  
<http://www.domainesorine.fr>  
 White, Red, Sparkling, Sparkling rosé wine

A family property of 11 hectares belonging to a family present at Santenay for centuries. Certain place-names and monuments bear our name. Our wines are clean, pure and harmonious. Their...

**DEMIGNY** - 2, IMPASSE DU MEIX DU CRAY  
**D'Allaines François DEMIGNY**



**03 85 49 90 16**  
<https://www.dallaines.com>  
 White, Red

We produce wines which are without an excess of oak, and which are representative of their "terroir" and their vintage. We are guided by both taste and passion.

**DEMIGNY** - 38, RUE DE RION  
**Depiesse Sylvain DEMIGNY**



**03 85 49 47 21**  
<https://www.sylvaindepiesse.co>  
 White, Red

I came to Demigny in 2012, where I make red and white Maranges wines with grapes from my vines at Cheilly. I treat the grapes with great respect so as to preserve their fruity character and balance....

**DEMIGNY** - 6 LE GRAND CHEMIN  
**Gauguey DEMIGNY**



**03 85 49 91 40**  
<http://domaine.info/>  
 White, Red, Sparkling

Domaine Gaugey, Wine grower on the Côte de Beaune and the Côte Chalonnaise.

**DEMIGNY** - 5 ROUTE DE BEAUNE  
**Jobard Claudie DEMIGNY**



**03 85 49 46 81**  
<http://www.domaineclaudiejobard.com>  
 White, Red

Claudie JOBARD, with her training as a nurseryman - oenologist and her family origins in Burgundy, will lead you to discover the authentic wines of Bu

**DRACY-LE-FORT** - 24, LE BUET  
**Deliance DRACY-LE-FORT**



**03 85 44 40 59**  
<http://www.domainedeliance.co>  
 White, Red, Sparkling, Sparkling rosé wine

Family domaine on the "route des vins" just outside the village in a bucolic setting. Traditional vinification. Producer of Crémant de Bourgogne.



**FONTAINES - 6, CHEMIN DU CLOS L'ÉVÊQUE**  
**Domaine de la Tour Saint-Hilaire**  
**FONTAINES**

**06 18 51 81 10**  
<https://www.latoursainthilaire.fr>  
 White

In the heart of the Côte Chalonnaise, where Mercurey meets Rully, is the Domaine de la Tour Saint-Hilaire, which enjoys spectacular views of vines, meadows and forests. Rich in history, this unusual...

**FONTAINES - 11, GRANDE RUE**  
**Gouffier FONTAINES**

**06 47 00 01 04**  
<https://www.gouffier.fr>  
 White, Red, Sparkling

Vins Gouffier is a wine business comprising 5.5 hectares of vineyards in the villages of Fontaines and Mercurey, and also has a négoce business specializing in wines from the Côte Chalonnaise.

**GIVRY - 9, RUE DES BOIS CHEVAUX**  
**Besson Guillemette et Xavier GIVRY**

**03 85 44 42 44**  
<http://domainebessongivry.com>,  
 White, Red

Domaine Besson is a family estate of 12 hectares. This small structure allows us to devote our full attention to the health of the vines and grapes, in order to produce a quality wine. You can also...

**GIVRY - 3 RUE DE SAUGES**  
**Chofflet GIVRY**

**03 85 44 34 78**  
<https://domaine-chofflet.com/>  
 White, Red

Situated in Russilly, hamlet of Givry, in the Côte Chalonnaise, where meadows and vines rub shoulders in a gentle relief, the Chofflet estate extends

**GIVRY - 36, RUE DE JAMBLES HAMEAU DE PONCEY**  
**Desvignes GIVRY**

**03 85 44 51 23**  
<https://domainedesvignesgivry.com>  
 White, Red, Sparkling rosé wine

The Desvignes family welcomes you to their estate, located in the heart of the hamlet of Poncey, in the vineyards at the foot of the hillside.

**GIVRY - LE CELLIER AUX MOINES LIEUDIT**  
**Domaine du Cellier aux Moines GIVRY**

**03 85 44 53 75**  
<https://cellierauxmoines.com/en>  
 White, Red

The Domaine du Cellier aux Moines was founded around 1130 in Givry by the Cistercian monks of the abbey of La Ferté, the first daughter of the abbey o

**GIVRY - 16, RUE DU CLOS SALOMON**  
**Domaine du Clos Salomon GIVRY**

**03 85 44 32 24**  
<http://www.givry-vins.com/>  
 White, Red

Family Domaine since 1632.

**GIVRY - 45, RUE DE JAMBLES - PONCEY -**  
**Lumpp Vincent GIVRY**

**03 85 44 52 00**  
<http://domaine-lumpp.fr>  
 White, Red

The Domaine Vincent LUMPP is located in the small village of Poncey and is made up of 8 ha of AOC GIVRY Premier cru vines distributed as follows: 1 hectare of Chardonnay in the "climats" Le Vignon...

**GIVRY - 6, RUE DE L'ORCENE**  
**Mouton GIVRY**

**03 85 44 37 99**  
<http://www.domainelaurentmouton.com>  
 White, Red

Family business for four generations. Surface area of 12 hectares. Direct sales on the estate.

**GIVRY - 18, RUE DES FAUSSILLONS**  
**Parize Père et Fils GIVRY**

**03 85 44 38 60**  
<https://laurentparize.wixsite.com/contacter>  
 White, Red

The PARIZE family has been making Burgundy for six generations on a 7.00 ha estate. Two grape varieties are used side by side: Pinot noir with white juice for the red wines and Chardonnay for the...

**GIVRY - 6 RUE DE LA PLANCHETTE - PONCEY**  
**Pelletier Hibon GIVRY**

**03 85 94 87 42**  
 White, Rosé, Red, Sparkling,  
 Sparkling rosé wine

Open days once a year in March. Invitation to a winegrower of another region before the end of year celebrations. Holiday cottage, rated "3 épis" by Gites de France

**GIVRY - 4, RUE DE L'ECOLE PONCEY**  
**Ragot GIVRY**

**03 85 44 35 67**  
<https://domaine-ragot.com/>  
 White, Red

Family domaine of 8 hectares at Poncey, a charming village surrounded by vineyards. The method of vinification remains traditional while employing the best of modern techniques.

**GIVRY - 20, RUE DE L'ORCÈNE**  
**Tatraux Jean et Fils GIVRY**



**03 85 44 36 89**

White, Red

Small family holding which dates back to 1763. Three-quarters of our wines come from old vines. Total area 7 hectares. Annual production 45,000 bottles sold direct from our well-ventilated,...

**GIVRY - 7, RUE DE L'HÔTEL DE VILLE**  
**Thenard GIVRY**

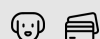


**03 85 44 31 36**

White, Red

For many generations this family-owned domaine has been growing wine, mainly at Givry. An outstanding 17th-century cellar ensures their ageing in the traditional manner.

**JAMBLES - 8 RUE DE CHARNAILLES**  
**Bourgeon René JAMBLES**



**03 85 44 35 85**

White, Red

Family estate nestled in a small wine village .

**JAMBLES - LE MOULIN NEUF 45 ROUTE DE SAINT-DÉSERT**  
**Danjean Berthoux Pascal JAMBLES**

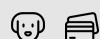


**03 85 44 54 74**

White, Red, Sparkling

Starting in 1993 with a surface of 6ha, more vines were purchased in 1999, and then taken over from a family operation in 2003. Today, the Domaine comprises of 11,6 ha

**JAMBLES - 43, RUE DE LA CÔTE CHALONNAISE**  
**Drain Christophe JAMBLES**



**03 85 44 31 92**

<http://www.domainechristophed>

White, Rosé, Red, Sparkling,  
Sparkling rosé wine

Family estate of 19 ha situated in the centre of the village of Jambles in the heart of the Côte Chalonnaise.

**JAMBLES - 26, RUE DE CHARNAILLES**  
**Sarrazin Michel et Fils JAMBLES**



**03 85 44 30 57**

<https://www.sarrazin-michel-et-fils.fr>

White, Red, Sparkling, Sparkling

Family estate located in the heart of Burgundy on the Côte Chalonnaise, 30 km south of Beaune. Its origins date back to the 17th century.

**MELLECEY - RUE DU MARTRAY**  
**Mellenotte Pascal MELLECEY**



**03 85 45 15 64**

White, Red, Sparkling

Family holding for several generations situated in a typical Burgundian village in the heart of the Côte Chalonnaise. We invite you to taste our wines in our vaulted cellar.

**MELLECEY - 47 RUE DES VENDANGEURS**  
**Pillot Romain et Simon MELLECEY**



**03 85 45 20 48**

<https://pillot-mellecey.com/>

White, Red

For six generations, Domaine Pillot Laurent & Romain has nurtured the know-how and passion for winegrowing passed down from father to son.

**MERCUREY - 40, GRANDE RUE**  
**Charousset - A ma Cave MERCUREY**



**03 85 45 28 28**

<https://www.amacave.fr/>

White, Rosé, Red, Sparkling,  
Sparkling rosé wine

In the heart of the Côte Chalonnaise, in a charming setting, discover our selection of Burgundy reds, whites, sparkling wines and bag-in-boxes. You can also discover wines from other regions as well...

**MERCUREY - 29, GRANDE RUE 8, RUE DE JAMPROYES**  
**Charton MERCUREY**



**03 85 94 80 21**

<https://www.domainecharton.co>

White, Red

Domaine CHARTON is a family estate created over 3 generations in Mercurey. The vines, aged from 15 to 100 years, offer a multitude of diverse and varied discoveries. The grape varieties are Pinot...

**MERCUREY - RUE DU CHÂTEAU CHAMIREY**  
**Château de Chamirey MERCUREY**



**03 85 44 53 20**

<https://www.chamirey.com/fr/>

White, Rosé, Red, Sparkling

The Domaine du Château de Chamirey, planted in the best terroirs of Mercurey, comprises 37 hectares (27 ha of reds and 10 ha of whites)

**MERCUREY - CHÂTEAU DU BOURGNEUF - 71, GRANDE RUE**  
**De Suremain MERCUREY**



**03 85 98 04 92**

<http://www.domaine-de-suremain.com>

White, Red, Sparkling

This 18-hectare estate in Mercurey on the Côte Chalonnaise has been in the same family for seven generations. It currently has 18 hectares of vines that are cultivated with respect for the...

MERCUREY - RUE DU CHATEAU CHAMIREY  
**Domaine de la Ferté MERCUREY**



03 85 44 53 20

<http://www.domaine-de-la-ferte.com>

Red

Built in the 17th century, the welcoming historic vat room of the Château de Chamirey was renovated in a traditional fashion recalling old-style craftsmanship with high quality, locally-made...

MERCUREY - 15, RUE DU CHÂTEAU  
**Domaine de la Monette MERCUREY**



03 85 98 07 99

<https://www.domainedelamonet>

White, Red

A 12-hectare organically farmed wine estate, which makes a multitude of cuvées from all its different climates.

MERCUREY - 3, RUE DU CLOS L'EVÊQUE  
**Domaine de la vieille fontaine MERCUREY**



03 85 87 02 29

<http://www.pgvf.fr>

White, Red

The estate was taken over at the beginning of 2021 by the Corcia family, based in Savigny les Beaune and specialising in the marketing of great Burgun

MERCUREY - 7, RUE DU CLOS ROND  
**Domaine de l'Europe - Cinquin Chantal et Guy MERCUREY**

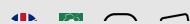


06 08 04 28 12

White, Red, Sparkling

Domaine de l'Europe, Guy CINQUIN Family estate born from the meeting of a Belgian artist and a Burgundy winegrower who made Europe in the field, hence its name. Surface area: 2ha80 of red and white...

MERCUREY - 1 RUE DU CRÊT  
**Domaine du Château de Garnerot MERCUREY**



06 62 10 47 94

<https://chateaudegarnerot.fr>

White, Red

The Château de Garnerot dates back to the 18th century and is an iconic location in Mercurey and on the Côte Chalonnaise. This recently created estate

MERCUREY - 16, RUE DES VARENNES  
**Domaine du Château d'Etroyes MERCUREY**



03 85 45 10 84

<https://www.chateau-etroyes.fr/>

White, Rosé, Red

Château d'Etroyes, founded in Mercurey in 1720, owns a 50 hectare vineyard on the terroirs of Mercurey and Rully.

MERCUREY - 20, RUE DU CLOS L'EVÊQUE  
**Duvernay P et F MERCUREY**



03 85 48 34 27

<https://www.domaine-duvernay-mercurey.com>

White, Red, Sparkling, Sparkling

Family wine estate created in 1970 by the grandfather Jean Duvernay. Today the son Jean-Luc and the granddaughter Floriane manage the estate.

MERCUREY - 9A RUE DE VAUGEAILLES CHAMIREY  
**Guillot Patrick MERCUREY**



03 85 45 27 40

White, Red, Sparkling, Sparkling rosé wine

Small family estate for 3 generations of barely 6 hectares located in Mercurey in the hamlet of Chamirey and as the saying goes: A Mercurey the name,

MERCUREY - 4 RUE DE JAMPROYES  
**Jeannin-Naltet MERCUREY**



03 85 45 13 83

<https://www.jeannin-naltet.fr>

White, Red

A family property for 6 generations, the estate has cultivated nearly 9 hectares of vines in Mercurey, 7 of which are classified as Mercurey 1er Cru.

MERCUREY - 16, PLACE DU BOURGNEUF  
**Jobard Bourland MERCUREY**



06 21 58 50 78

<https://sophiebourlandjobard.co>

White, Red

This estate, one of the smallest in Mercurey, comprises 1.8 hectares, 0.3 of which are planted with Chardonnay and the rest with Pinot Noir.

MERCUREY - 59 - 59 A, GRANDE RUE  
**Juillot Michel MERCUREY**



03 85 98 99 89

<https://www.domaine-michel-juillot.fr>

White, Rosé, Red, Sparkling,

The Domaine Michel Juillot has been in the same family in Mercurey for four generations. It has 31 hectares of vines, located in Mercurey, Rully, and Aloxe Corton, including 8.5 hectares of Premier...

MERCUREY - 11, RUE DU CLOS DU ROY HAMEAU DE TOUCHES  
**Meix Foulot MERCUREY**



03 85 45 13 92

<https://www.domainedumeixfou>

White, Red

Agnès Dewé de Launay, following in the footsteps of her father Paul de Launay, manages the 20-hectare family estate, mainly in Mercurey. Her aim is to bring out the personality of each terroir in...



MERCUREY - 19, RUE DE JAMPROYES

**Raquillet François MERCUREY**



**03 85 45 14 61**

<https://www.domaine-raquillet.com>

White, Red

Our 12-hectare estate has been handed down from father to son for ten generations, growing mainly Mercurey Rouge. François RAQUILLET took over the business in 1990 and is committed to perpetuating...

MERCUREY - 55, GRANDE RUE LE CLOS ANTONIN RODET

**Rodet Antonin MERCUREY**



**03 85 45 25 49**

<https://www.rodet.com>

White, Red, Sparkling, Sparkling rosé wine

The Clos Antonin Rodet stands in an idyllic setting in the center of Mercurey and the tasting cellar is located on the D978. Visitors are welcome to discover the rich diversity of the wines of the...

MERCUREY - 4, RUE DE MERCUREY

**Theulot Juillot MERCUREY**



**03 85 45 13 87**

<https://www.theulotjuillot.eu>

White, Red, Sparkling

The estate was created by Marguerite Juillot, who passed it on to her grandchildren Nathalie and Jean-Claude in 1987. It now covers 12 hectares, produces essentially Bourgogne, Mercurey and Mercurey...

MERCUREY - 14, RUE DE CHAMEROSE

**Tramier L & Fils MERCUREY**



**03 85 45 10 83**

<https://www.maison-tramier.com>

White, Rosé, Red, Sparkling,

This family business in the countryside at the foot of the vines in Mercury was established in 1842. Visitors receive a warm welcome at the boutique, where they can taste our wines selected with care...

MERCUREY - 30 TER RUE DU LIARD TOUCHES

**Tupinier-Bautista MERCUREY**



**03 85 45 26 38**

<https://www.domaine-tupinier-bautista.com>

White, Red

Since 1770, in Burgundy, in the heart of the Côte Chalonnaise, the estate has been producing fine wines exclusively from the village of Mercurey and the small hamlet of Touches. Manu Bautista took...

REMIGNY - 4, RUE DU BOURG

**Diconne Jean-François REMIGNY**



**03 85 87 20 01**

<http://diconne.free.fr>

White, Rosé, Red, Sparkling, Sparkling rosé wine

The company Jean-François DICONNE welcomes you in Remigny where you can taste in our cellar the wines of our range. Organisation of tastings at home on request.

RULLY - 11 RUE DES BORDES

**André Delorme Rully**



**03 85 87 64 14**

<https://www.andre-delorme.com>

White, Red, Sparkling, Sparkling

Visit our vaulted cellars carved into the rock, discover the process of elaboration of our Crémants de Bourgogne. Tasting and "Mâchon".

RULLY - 5, PLACE DU CHAMP DE FOIRE

**Albert Sounit RULLY**



**03 85 87 20 71**

<https://www.albert-sounit.fr/>

White, Red, Sparkling, Sparkling rosé wine

Located in the heart of Rully, we look forward to welcoming you to discover our Crémants de Bourgogne and Côte Chalonnaise wines.

RULLY - 6 ZA LES CHAMPS ROUGES

**Belleville RULLY**



**03 85 91 06 00**

<https://www.domainebelleville.com>

White, Red

Born at the beginning of the 20th century, it farms 18 hectares of vines located between Gevrey Chambertin and Mercurey, and has been in organic conversion since the end of 2017. His wines are made...

RULLY - 31, GRANDE RUE

**Briday Michel RULLY**



**03 85 87 07 90**

<http://www.domaine-briday.com>

White, Red, Sparkling, Sparkling

Family estate of 15 hectares. Traditional vinification for the most authentic wines possible, with respect for the terroirs. The estate has a long-standing commitment to environmental...

RULLY - 4, RUE DU CHÂTEAU

**De Villaine RULLY**



**03 85 91 20 50**

<https://www.de-villaine.com>

White, Red

This estate is run according to Bourgogne traditions, and we are committed to offering you the very best expression of the terroir we cultivate. Our vines were certified organic in 1983 and we work...

RULLY - 2, RUE DE LA RÉPUBLIQUE

**Domaine de Cardon RULLY**



**06 69 72 08 65**

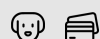
<http://www.domaine-de-cardon.fr>

White, Rosé, Red, Sparkling

Our estate is located in the heart of Burgundy and our cellar in the small village of Rully.

**RULLY** - 9, RUE SAINT-LAURENT

## Domaine de La Renaissance RULLY



**06 09 76 78 08**

White, Red

The name of this domain of 15 hectares on different appellations: Mercurey, Rully, Bouzeron and Pommard, was not chosen at random. Driven by tenacity,

**RULLY** - 21, RUE DE GELEY

## Domaine de l'Ecette - Daux Vincent RULLY



**03 85 91 21 52**

<https://domaine-ecette.fr>

White, Red, Sparkling

Our estate, located in Rully in the Côte Chalonnaise, produces great wines from noble Bourgogne grape varieties: Chardonnay, Pinot noir and Aligoté. The estate sells its produce in France and...

**RULLY** - CAVES : 5 RUE DES BORDES COURRIER : 7 RUE DE LA LOPPE

## Domaine des Chauchoux RULLY



**03 85 87 12 94**

<https://domainedeschauchoux.c>

White, Red

The estate was founded in the 1920s by André Belleville. The fourth generation has now taken up the torch of this fine family history. The production of the 20 hectares of vines is optimised in the...

**RULLY** - RUE DE LA BUISSEROLLE

## Dureuil-Janthial Vincent RULLY



**03 85 87 26 32**

<https://www.dureuil-janthial.fr/le-domaine/>

White, Red

In the heart of Burgundy, the Dureuil-Janthial estate covers 20 hectares of vines in Rully and Mercurey, in the Côte Chalonnaise, but also in Puligny-

**RULLY** - 20, RUE DES BUIS

## Jaeger Defaix RULLY



**03 86 42 40 75**

<https://www.jaeger-defaix.com>

White, Red

In 2005, Hélène Jaeger Defaix took over the management of this estate from her great-aunt, Henriette Niepce.

**RULLY** - 4 RUE NEUVE

## Lefort RULLY



**06 50 39 59 05**

<http://www.domainelefort.fr>

White, Red

A 5-hectare estate in the Mercurey 1er cru and Rully appellations, in white and red. Mercurey 1er Cru Champs Martin Mercurey 1er Cru Castille Mercurey 1er Cru Clos L'évêque Rully Chaponnière Rully la...

**RULLY** - 2, RUE DE CHAGNY LE MEIX GUILLAUME

## Ninot RULLY



**03 85 87 07 79**

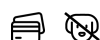
<http://www.domaineninot.com>

White, Red

Domaine Ninot grows, produces and sells organically grown wines in Rully, in the heart of the Côte Chalonnaise. Several terroirs of the Rully and Mercurey AOPs are available for tasting and sale. We...

**RULLY** - 12 RUE SAINT-LAURENT

## P. et M. JACQUESON RULLY



**03 85 43 26 05**

<http://www.jacqueson-vins.fr>

White, Red

A family business founded in 1946 by Henri Jacqueson, Paul Jacqueson joined his father in 1970. Paul's two children, Marie and Pierre Jacqueson, now run the estate. They produce Bouzeron, Rully and...

**RULLY** - 11 BIS, RUE DU MOULIN À VENT

## Picamelot Louis RULLY



**03 85 87 13 60**

Sparkling, Sparkling rosé wine

Visitors to the Louis Picamelot family estate enjoy an unforgettable experience in our impressive 2000m2 cellars dug out of the rock at the foot of the vines.

**RULLY** - 17 RUE DES BUIS

## Ponsot Sylvain et Lucie RULLY



**03 85 87 32 44**

<https://pay-pro.monetico.fr/ponsotsetl/mes>

White, Red, Sparkling

A 7-hectare family wine estate in the commune of Rully. We produce Crémant de Bourgogne Blanc de Blanc, Bouzeron, Rully ....

**RULLY** - 21, RUE DES BUIS

## Rois Mages - Debavelaere Félix RULLY



**03 85 48 65 64**

<http://www.rois-mages.com>

White, Red

Handsome vaulted cellars able to accommodate large groups. 9-hectare domaine built up over a 20-year commitment by Anne-Sophie and Stanislas Debavalaere.

**RULLY** - 16, RUE DE LA BUISSEROLLE

## Vitteaut-Alberti RULLY



**03 85 87 23 97**

<http://www.vitteaut-alberti.fr>

Sparkling, Sparkling rosé wine

A family estate for 3 generations, Vitteaut-Alberti was born in 1951 in Rully, the cradle of Burgundian sparkling wines.

**SAINT-DENIS-DE-VAUX** - 6 RUE DE L'EVÊCHÉ  
**Domaine de l'Evêché - Joussier Quentin et Vincent SAINT-DENIS-DE-VAUX**



**03 85 44 30 43**  
<http://www.domainedeveche.c>  
 White, Red, Sparkling, Sparkling rosé wine

Welcome to our 14-hectare estate: 17th century house and cellars, monumental 19th century staircase, exceptional panorama.

**SAINT-DESERT** - 26, RUE DE LA MESSE CIDEX 1516  
**Davanture SAINT-DESERT**



**03 85 47 95 57**  
<https://www.domainedavanture.>  
 White, Red, Sparkling

We are three brothers, Eric, Damien and Xavier, accompanied by a team of enthusiasts who produce red and white wines in the Burgundy Côte Chalonnaise, Givry and Mercurey appellations. Our cellar is...

**SAINT-DESERT** - 6, RUE DE BASSEVELLE  
**Goubard Michel et Fils SAINT-DESERT**



**03 85 47 91 06**  
<https://www.bourgogne-goubard.com/>  
 White, Rosé, Red, Sparkling,

A family estate since 1600, Pierre-François and Vincent Goubard continue the tradition of their ancestors, producing Burgundy appellations in the Côte Chalonnaise region on 38 hectares. Their range...

**SAINT-DESERT** - RUE DE PÉPINS CIDEX 1507  
**Issert Stéphane SAINT-DESERT**

**06 15 05 36 74**  
 White, Rosé, Red, Sparkling

A family estate on the Côte Chalonnaise, we produce Bourgogne Aligoté, Bourgogne Chardonnay, Bourgogne Pinot Noir and Givry red. As winegrowing is an outdoor profession, please let us know when you...

**SAINT-LOUP-GEANGES** - 16 RUE DU PARC  
**Escoffier SAINT-LOUP-GEANGES**



**03 85 49 98 22**  
<https://www.domaine-escoffier.com>  
 White, Red

We are a small structure with prestigious appellations located in Côte de Beaune, from Pommard/Volnay to Ladoix-Serrigny via Aloxe-Corton. We have bee

**SAINT-MARD-DE-VAUX** - 35, RUE DES FOUGÈRES  
**Domaine du Four Bassot SAINT-MARD-DE-VAUX**



**03 85 45 13 04**  
<https://www.domainefourbassot71.com>  
 White, Rosé, Red, Sparkling,

The estate, now run by Sébastien GAULT, has 27Ha of vines in the Côte Chalonnaise: Mercurey, Rully, Bouzeron, Givry.

**SAINT-MARTIN-SOUS-MONTAIGU** - 1, RUE DU MEIX  
**Domaine du Clos Moreau SAINT-MARTIN-SOUS-MONTAIGU**



**03 85 98 95 00**  
<https://www.domaine-pascal-massenot.fr>  
 White, Rosé, Red

This estate has recently launched a new service involving private tastings in the customer's own home, with a minimum of 10 participants. These evenings are full of fun discoveries and surprises for...

**SAINT-MARTIN-SOUS-MONTAIGU** - 2 RUE DU CLOS DES BOILLES  
**Garrey Philippe SAINT-MARTIN-SOUS-MONTAIGU**

**03 85 45 23 20**  
<http://www.philippegarrey.com>  
 White, Red

5 ha estate certified organic and biodynamic.

**SAINT-MARTIN-SOUS-MONTAIGU** - 8 IMPASSE DE LA DÉESE EPONA CIDEX 703  
**Size Patrick SAINT-MARTIN-SOUS-MONTAIGU**

**03 85 45 23 05**  
<https://domaine.patrick.chez-alice.fr>  
 White, Red

Fourth generation of winegrowers, Patrick and Séverine SIZE cultivate nearly 6 hectares of vines in the commune of Saint Martin sous Montaignu, bordering the village of Mercurey. The estate includes...

**SAINT-MARTIN-SOUS-MONTAIGU** - 3, RUE DES MARRONNIERS  
**Virost SAINT-MARTIN-SOUS-MONTAIGU**



**03 85 45 21 44**  
<https://www.domainevirost-mercureybio.fr>  
 White, Red

This estate has five hectares of organic vines. It opts for manual harvesting, careful sorting of the grapes, gentle handling of the harvest, and temperature-controlled fermentation to reveal the...

**SAINT-SERNIN-DU-PLAIN** - 2, RUE DE NYON  
**Bellavoine Caroline SAINT-SERNIN-DU-PLAIN**



**06 65 06 26 50**  
 White, Rosé, Red, Sparkling

I am passionate about wine and took over this vineyard in Saint-Sernin-du-Plain and Dezize-lès-Maranges in 2003, after having returned to school to become an oenologist. I care for my vines and age...

**SAINT-SERNIN-DU-PLAIN** - 9 & 46, RUE DE MERCEY  
**Domaine du Beauregard SAINT-SERNIN-DU-PLAIN**



**06 16 41 00 99**  
<https://www.domainedubeauregard>  
 White, Rosé, Red, Sparkling, Sparkling rosé wine

Our wine estate is located in the Côtes du Couchois, a few minutes from Les Maranges in the south of the Côte de Beaune.



**SAINT-SERNIN-DU-PLAIN** - 12, GRANDE RUE  
**Marinot Verdun - Cave de Mazenay**  
**SAINT-SERNIN-DU-PLAIN**



**03 85 49 67 19**  
<https://www.cavedemazenay.com>  
 White, Rosé, Red, Sparkling,  
 Sparkling rosé wine

The Cave de Mazenay is located in the commune of St-Sernin-du-Plain in the heart of the Côtes du Couchois AOC, between the Côte de Beaune and the Côte Chalonnaise, where it has been attracting lovers...

**SAMPIGNY-LES-MARANGES** - 10, RUE ST ANTOINE  
**Domaine des Rouges Queues SAMPIGNY-LES-MARANGES**



**03 85 91 18 69**  
<https://www.domainedesrouges.com>  
 White, Red

This Domaine was created in 1998, and now consists of 4ha of vines, both owned and rented. The vines are cared for without chemicals or herbicides. All of the vines are laboured, harvests are...

**SAMPIGNY-LES-MARANGES** - 5 ROUTE DE CHEILLY  
**Duchemin SAMPIGNY-LES-MARANGES**



**03 85 91 16 32**  
<https://www.domaineduchemin.com>  
 White, Red, Sparkling

We welcome you to our family estate to discover the wines of the Côte de Beaune. The birthplace of the "Maranges" appellation, the village of Sampigny is a charming place to visit. Let yourself be...

**SAMPIGNY-LES-MARANGES** - 14 ROUTE DE CHEILLY  
**Regnard Christian SAMPIGNY-LES-MARANGES**



**03 85 45 51 29**  
<https://domaine-regnard.fr/>  
 White, Red

Our estate is located in Sampigny-lès-Maranges, in a landscape with a rich, gentle personality. The estate's first vines were acquired by Auguste Regnard shortly after the First World War. Rich in...

**CHALON-SUR-SAONE** - 9 GRANDE RUE  
**La Cave de Mazenay**



**03 85 49 65 74**  
<https://www.cavedemazenay.com>

Since June 2021, the new cellar in Chalon Sur Saône, offers wines at the same prices as at the Domaine, to the Chalonnais and to visitors.

**RULLY** - 7, CHEMIN DE LA PLAINE  
**Domaine Benoît Charbonnaud**



**03 85 87 27 78**  
<https://charbonnaud.com>

Dive into the Côte Chalonnaise wines and Burgundy rums. Tastings in our vaulted cellar on the banks of the Canal du Centre.



## Wine tourism

BEAUNE - 410 RUE AMPÈRE

### My French Tour



06 58 00 78 46

<http://www.myfrenchtour.com>

Guided tours of the Burgundy vineyards in vintage cars. Walks, tastings, cellar visits.

CHALON-SUR-SAONE - RUE MAL DE LATTRE

### Le vin s'anime



07 71 15 79 46

<https://www.levinsanime.fr>

I offer wine-tastings in your home or wherever you are staying(hotel, self catering accommodation, B&B, Airbnb...).

CHEILLY-LÈS-MARANGES - 8 PLACE DE LA MAIRIE 8

PLACE DE LA MAIRIE

### DOMAINE CLOS SAINT JEAN



06 16 99 01 68

From vine to wine: a 360° tour of the Clos Saint Jean estate!

FRAGNES-LA LOYERE - 8, RUE DU CHAMP DU PUIT

### Wine Dream Concept



06 60 42 42 01

<http://www.wine-dream-concept.fr/>

Personalized initiations adapted to all, fun and accessible, enriching and original, whilst keeping to the precise themes.

GIVRY - 27 RUE DE LA RÉPUBLIQUE

### Activinum - Œnologie



06 83 30 46 71

<https://activinum.fr>

In Givry, in a modern setting and conducive to discovery, come and enjoy the wines of Southern Burgundy and especially those of the Côte Chalonnaise.

GIVRY - 26 RUE DES FAUSSILLONS

### Le Vin s'enhardit - Dégustation à domicile



07 87 87 58 41

<https://levinsenhardit.fr>

Wine tastings for individuals and companies: at home, for EVG/EVJF, seminars or private events. Cellar advice on request.

JAMBLES - 43 RUE DE LA CÔTE CHALONNAISE

### Domaine Drain



06 40 33 73 90

The Christophe DRAIN estate is happy to welcome you to its typically Burgundian setting.

JAMBLES - 43 RUE DE LA CÔTE CHALONNAISE

### Immersion dans les vignes



03 85 48 37 97

Dominique, a vineyard worker by trade, offers a guided tour of the history of the vines in the heart of the Côte Chalonnaise, followed by a tasting of Givry premier cru in a cadole dating from the...

RULLY - 2 RUE DE CHAGNY

### Domaine Ninot (Dégustation - Le Trio Ninot)



03 85 87 07 79

<https://domaineninot.com/>

Tasting - The Ninot trio Tasting of 4 wines. Certified organic estate.

RULLY - 2 RUE DE CHAGNY

### Domaine Ninot (Visite-Dégustation - Bicyclettes au domaine)



03 85 87 07 79

<https://domaineninot.com/touris-viticole/>

Electric bike tour of the vineyards of Rully and Mercurey Visit to the winery and ageing room. Tasting of 3 organic wines (village, 1er cru).

RULLY - 2 RUE DE CHAGNY

### Domaine Ninot (Visite-dégustation - Rully et Mercurey, les secrets de nos terroirs)



03 85 87 07 79

<https://domaineninot.com/touris-viticole/>

Guided tour of the vines, vat room and ageing room. Tasting of 5 wines. Certified organic estate.

**SAINT-JEAN-DE-VAUX** - 28 PLACE DES TILLEULS  
**LES ATELIERS VINS DE MARIE-ANTOINETTE - CULTUREWINETV**

**06 45 10 12 49**  
<https://www.culturewinetv.com>

Organisation of wine tasting workshops at any venue of your choice (gîtes, hotels, seminars, etc.) or on site. Written and audio-visual wine communications agency.

**SAINT-SERNIN-DU-PLAIN** - 9 RUE DE MERCEY  
**Domaine de Beauregard**

<https://www.billetweb.fr/degust-de-4-vins1>

Discover our family estate through its history, its know-how and its terroirs drawn between the Côte de Beaune and the Côtes du Couchois.



## Breweries

**EPERVANS** - 223, ROUTE DE COLOMBEY  
**Brasserie La Rustine**

**06 89 10 39 79**

Artisan brewers La Rustine "the beer for when you're tired" is open in Chalon-sur-Saone, Burgundy



## Ailleurs dans la Côte Chalonnaise

**BISSEY-SOUS-CRUCHAUD** - 14, RUE DES MILLERANDS  
**Cave de Bissey BISSEY-SOUS-CRUCHAUD**

**03 85 92 12 16**  
<http://www.cave-bissey.com>  
 White, Rosé, Red, Sparkling, Sparkling rosé wine

Shop open all year round. Sale of local products. Gourmet market with local producers. Sweet Wine Festival (October).



**BUXY** - 4 - 6, ROUTE DE CHALON  
**Millebuis par les Vignerons de Buxy BUXY**

**03 85 92 03 03**  
<https://www.millebuis.fr/>  
 White, Rosé, Red, Sparkling, Sparkling rosé wine

The seminar, wine tourism, sales and tasting area "la Maison Millebuis" and its magnificent barrel cellar are a must.



**GENOUILLY** - 2 ALLÉE DU 19 MARS 1962  
**Cave des vignerons de Genouilly GENOUILLY**

**03 85 49 23 72**  
<https://vigneronsdegenouilly.fr>  
 White, Rosé, Red, Sparkling

Located on the edge of the Côte Chalonnaise, at the gateway to the Charolais region, the Vignerons de Genouilly winery has been a place of sharing and local history since 1932. With less than 100...



**JULLY-LES-BUXY** - 2 CHEMIN DE LA PRAYE  
**Domaine la Renarde JULLY-LES-BUXY**

**06 70 07 66 51**  
<https://domainelarenarde.com/>  
 White, Red, Sparkling

Located in the heart of the Côte Chalonnaise, La Renarde is a family estate that was created in the 1970s by Mr Paul Perret, who ran the 6-hectare estate alone until 2006. Mr Grégory Peyre...



**MOROGES** - 12 RUE DE LA PAULÉE CERCOT  
**Bak Stéphane MOROGES**

**06 25 64 72 65**  
 White, Red, Sparkling

I am the first generation of winemakers A man with a passion for vines and wine I have been cultivating and producing in a reasoned way since the beginning and I have just obtained the organic label.



**MOROGES** - 3, IMPASSE DE LA LUOLLE  
**Domaine de La Luolle MOROGES**

**06 21 86 05 27**  
<https://www.domainedelaluolle.fr>  
 White, Red, Sparkling rosé wine

The Domaine de la Luolle farms 8 hectares organically and biodynamically to produce a variety of wines from the Côte Chalonnaise (Givry, Mercurey, ...



**ROSEY** - 2, RUE DU TREUIL  
**Lagarde ROSEY**

**06 26 53 19 23**  
<https://www.domaine-lagarde.fr>  
 White, Red, Sparkling

The Lagarde family vinify, mature and market their wines in a fully restored 16th-century priory in the village of Rosey, in the heart of the Côte Chalonnaise. The Domaine Lagarde was created in...









# Find all our tips for a successful stay in the Grand Chalon:

## Accommodation



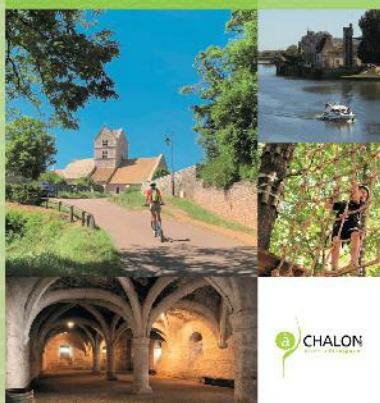
## Catering



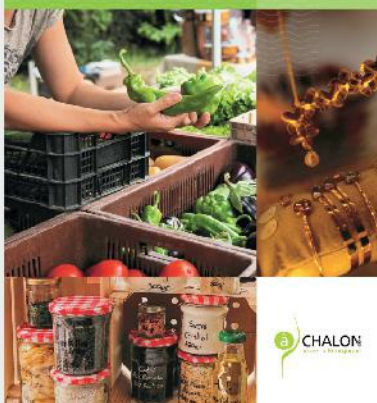
## Wine tourism & Breweries



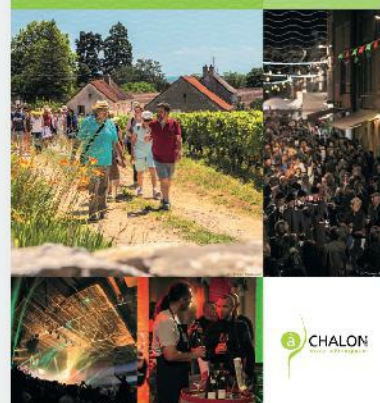
## Heritage & Leisure activities



## Artcraft, Shops & Services



## Activities, Events & Parties



à to download  
& consult on:

[www.achalon.com](http://www.achalon.com)

**Grand Chalon Tourist Office**

4 place du Port Villiers  
71100 CHALON-SUR-SAÔNE  
[officedetourisme@achalon.com](mailto:officedetourisme@achalon.com)  
+33 (0)3 85 48 37 97

