

# LE GRAND AUTUNOIS MORVAN

2023

## HOUSING The Gîtes



sunday july 21st



The Autunois is a natural region, nestled in the north of South Burgundy, in the foothills of the Morvan. It benefits from a preserved environment and an exceptional location in the heart of Burgundy.

With its 2000 years of history, it is a city not to be missed in Burgundy. Born of the will of the emperor Augustus, around 15 BC, it is located 30 km east of Mont-Beuvray, at a strategic crossroads of communication routes.





# Légendes

## Facilities / Activities / Services



Wellness (Sauna, hammam, jacuzzi)



Number of people



Pets allowed



Indoor swimming pool



Discovery pool



Games for children



Hiking trail



Bicycle



Number of rooms



Tennis

## Labels



Bicycle home



Regional Nature Park value



Recommended establishments GTMC



Holiday vouchers accepted

## Languages spoken



German



English



Spanish



Dutch

**LES JOURNÉES ROMAINES**  
5 & 6 août

**AUTUN**

**AUGUSTODUNUM**  
Au théâtre romain  
à la tombée du jour  
Les portes du temps...  
Nouveaux spectacles  
29/30 juillet & 3/5/6/10/12/13 août 2022  
www.augustodunum.fr

**AUGUSTODUNUM**  
28-29 juillet  
2-4 & 5 août  
9-11 & 12 août

TOLIX  
MADE IN FRANCE



# Gîtes and furnished accommodation



## GITE DES CHATAIGNIERS ★★

30 route des Sanquiers Joux - 71550 ANOST  
- [franck.vessiere@wanadoo.fr](mailto:franck.vessiere@wanadoo.fr)

Gite with panoramic view on the ANOST valley, facing south-east and offering continuous sunshine. The gîte is composed of : on the ground floor, a living room with a fully equipped kitchen, a sofa bed, a shower room with a shower cubicle, toilet. Upstairs, a bedroom with a 140cm bed and a bedroom with three 90cm beds. A car park, a garden with a lounge, deckchairs and a barbecue. Arrivals from 4pm and departures from 10am.

### Rates

One night (apartment) : 53 € - 60 € Per week low season : 411 €, Per week high season : 460 €



## VILLIE

Vaumignon - 71550 ANOST  
- [marcel.villie@wanadoo.fr](mailto:marcel.villie@wanadoo.fr)

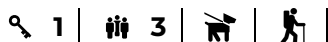
[webitea-71-V4-francois.glitea.fr/reso/etape1.php?NUM=1179&INSTANCE=gites71&OPE=CRTBOUF](http://webitea-71-V4-francois.glitea.fr/reso/etape1.php?NUM=1179&INSTANCE=gites71&OPE=CRTBOUF)

In a quiet hamlet in the Parc du Morvan, this charming completely independent house enjoys superb views over the meadows and the forest. Ground floor: living room with equipped kitchen, dining area and lounge (wood stove, flat screen TV, DVD player); WC. 1st floor: large bedroom for 3 people (1 bed 140cm and 1 bed 90cm) in exposed stone, shower room. WC. Electric heating. Cellar with freezer and



### Rates

Per week low season : 250 €, Per week high season : 320 €  
Per week middle season : 250 €



## LA DOMANIALE

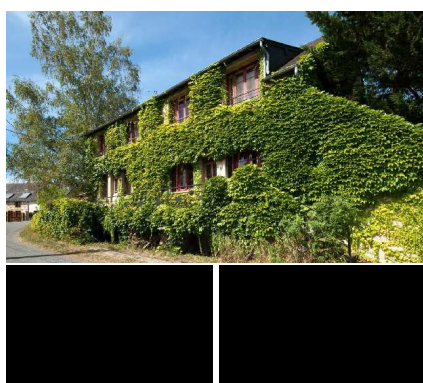
2 les Roux - 71550 ANOST

url vide

Authentic forest house with character from the beginning of the 20th century - steeped in history & carefully restored - nestled in the heart of nature on an exposed western hillside, on the edge of meadows & a vast forest (including 5 ha of private woods with watchtowers to observe wildlife: foxes, roe deer, wild boar...), in the hollow of a bucolic valley of Haut Morvan, soothing landscaped setting of gentle mountains. Mini rural hamlet nestled 6 km from the charming shopping town of Anost...

### Rates

Per week low season : 1250 €, Per week high season : 1590 €  
Per week middle season : 1250 €



## DUMIEL GILBERT ★★★

Le Mont - 71550 ANOST  
+33 3 85 29 55 60 -

[webitea-71-V4-francois.glitea.fr/reso/etape1.php?NUM=882&INSTANCE=gites71&OPE=CRTBOUF](http://webitea-71-V4-francois.glitea.fr/reso/etape1.php?NUM=882&INSTANCE=gites71&OPE=CRTBOUF)

Morvan farm, located in the heart of the Morvan park. Ground floor: large living room with bar; equipped kitchen, open with American bar to the dining room; linen room, WC. 1st floor: library, 4 bedrooms (with fitted carpet): 4 double beds, 3 shower rooms (1 with bathtub) and 3 WCs. Central heating. 2 terraces. Unfenced garden. Children's games (swing). Horse riding and swimming at 3 km.



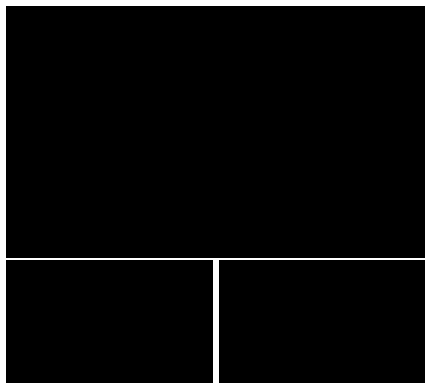
### Rates

Per week low season : 550 €, Per week high season : 640 €  
Per week middle season : 580 €





# Gîtes and furnished accommodation



## LA MAISON DE LUCIE

Le Mont - 71550 ANOST  
+33 3 85 29 55 60 - [info@gites71.com](mailto:info@gites71.com)  
[webiteo-71-V4-francois.glitea.fr/reso/etape1.php?NUM=1899&INSTANCE=gites71&OPE=CRTBOU](http://webiteo-71-V4-francois.glitea.fr/reso/etape1.php?NUM=1899&INSTANCE=gites71&OPE=CRTBOU)



### Rates

Per week low season : 460 €, Per week high season : 630 €  
Per week middle season : 530 €



Gilbert, collector of vintage cars from the 20s to 40s (including 2 Citroën "tractions" / possible tours & rides with him!), And his partner Erika (Austrian by origin and Morvandelle by adoption), welcome you to 'an authentic country farm from 1880 steeped in history & carefully restored. Small typical hamlet, calm and very peaceful, leaning against a balcony on the southern hillside exposed in the



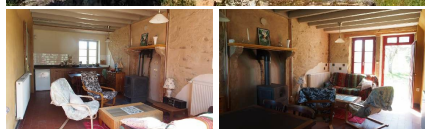
## LA PETITE MAISON

17 route de Bussy - 71550 ANOST  
[roouge\\_ceriise@hotmail.fr](mailto:roouge_ceriise@hotmail.fr)

url vide



, A gîte classified \*\* and labelled Clévacances for 4 to 5 people in a small house 2 minutes walk from a lake and the municipal leisure centre and in the heart of the Morvan Regional Nature Park. Take advantage of the park, but also of the 2 hectares of wooded land on the site. 5 minutes walk from the town of Anost, where you will find all the local shops you need during your stay. Future permaculture garden, do not hesitate to ask for a visit! A gîte classified \*\* and labelled Clévacances for 4-5 people in an old-fashioned renovated house in the heart of



## GITE LES GRAILLOTS

19 Rue de la Cure - 71550 ANOST

House in village, adjoining (with ours), completely renovated in the Parc du Morvan



## PORTANIER-D'HONT SYLVIE

Corcelles - 71550 ANOST





# Gîtes and furnished accommodation



## LA GRANGE DES HIRONDELLES

les Perrières - 71400 ANTULLY

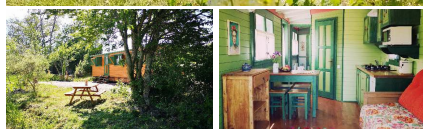
[url vide](#)

### Rates

One night (apartment) : 370 € - 670 € Per week low season : 680 €, Per week high season : 1000 €  
Per week middle season : 720 €



3 | 6 | | |



## LA ROULOTTE DES CLARTES

3 Impasse de la Fontaine du Fou - 71400 ANTULLY

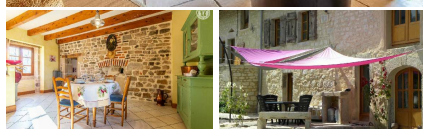
[url vide](#)

### Rates

One night (apartment) : 84 € - 104 €



4 | | |



## LES PERRIERES

les Perrières - 71400 ANTULLY

[url vide](#)

### Rates

Per week low season : 460 €, Per week high season : 690 €  
Per week middle season : 600 €



2 | 5 | | |



## GITE LES 3 POMMIERS

15 Route de la Rive du Bois - 71400 ANTULLY  
[les3pommiers71@gmail.com](mailto:les3pommiers71@gmail.com)

[url vide](#)



Our single-storey gîte, renovated to new, is an outbuilding located in a typical Burgundy farmhouse decorated with stones that make the beauty of our countryside. These thick walls keep the coolness in summer. It includes a private garden where you can enjoy a quiet and green environment. Situated between Autun (15 km) and Le Creusot (15 minutes, TGV station Creusot/Montceau 25 minutes), you will find all necessary amenities in Autun (pharmacy, doctors, supermarkets, bank)

2 | 4 | | |



# Gîtes and furnished accommodation



## LE COCAND - GITES DE CHARME - AUGUSTE

3 rue Cocand - 71400 AUTUN

[url vide](#)

### Rates

One night  
(apartment) : 110 € - 120 €  
Week (apartment) : 695 € - 756 €



, This 45m² duplex flat is nestled in the heart of "Le Cocand", a town house in Autun's historic quarter. Its ideal location will allow you to enjoy the bustle of the city, with its restaurants and pedestrian streets nearby, while being just a stone's throw from the surrounding countryside. You can also take advantage of the inner courtyard and the events on offer at Le Cocand. Charming gîte nestling in the heart of a town house in Autun's historic quarter, just a stone's throw from the



## CHARMANT PETIT MEUBLE EN CENTRE VILLE AUTUN ★★★

rue du Faubourg Saint-Andoche - 71400 AUTUN

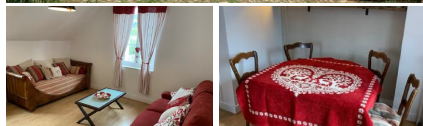
[url vide](#)

### Rates

One night  
(apartment) : from 72 €



Charming furnished apartment in Autun 3 stars This 5-seater flat has a fully equipped kitchen. It is a 5-minute walk from Autun town centre and a 10-minute walk from the cathedral, the upper town and the Roman remains. Autun is 30 minutes from Le Creusot TGV station, which takes you to Paris in 1 hour 20 minutes and Lyon in 40 minutes. Autun is 40 minutes from Beaune (hospices and Burgundy wine route). We offer bedding for 4 adults (1 double bed + 1 large sofa bed) and 1



## LE PALAIS

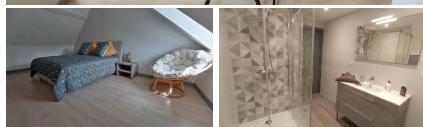
11 Place d'Hallencourt - 71400 AUTUN

[url vide](#)

### Rates

One night  
(apartment) : 150 €

, Located in Autun, the flat Le palais Autun is a sustainable accommodation in the heart of the historic city, next to the Saint-Lazare cathedral. , Flat located in the heart of Autun's medieval quarter, close to restaurants and shops. Located in Autun, Le palais Autun flat is a sustainable accommodation, 49 km from Hospices Civils de Beaune and 30 km from Le Creusot TGV train station. Wi-Fi internet access and free on-site parking are provided. This non-smoking property is 2.2 km from the Autun golf course. This spacious flat features a



## LE PALAIS DUPLEX

11 Place d'Hallencourt - 71400 AUTUN

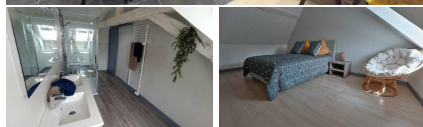
- [le-palais6@orange.fr](mailto:le-palais6@orange.fr)

[url vide](#)

### Rates

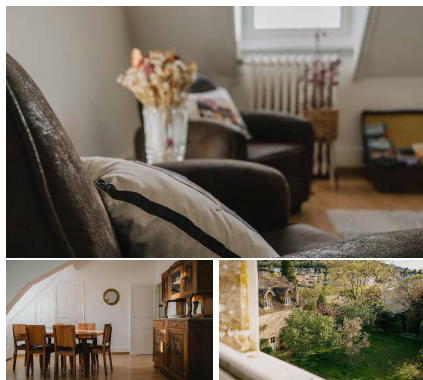
One night  
(apartment) : from 150 €

Featuring a bar and city views, Le palais duplex is located in Autun, 30 km from Creusot TGV train station and 2.2 km from the Autun golf course. Wi-Fi internet access and free on-site parking are provided. This non-smoking establishment is 49 km from the Hospices Civils de Beaune. This spacious flat features 2 separate bedrooms, a bathroom, a fully equipped kitchen with a dining area and a living room. Featuring a bar and city views, Le palais duplex is located in Autun. Featuring a bar and city views, Le palais duplex is located in Autun, 30 km





# Gîtes and furnished accommodation



## APPARTEMENT FAMILIAL CENTRE VILLE - MAISON DELALONDE ★★

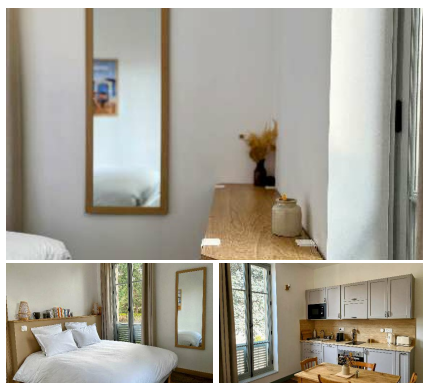
url vide



Rue du Faubourg Saint-Andoche - 71400 AUTUN  
emm-delalonde@wanadoo.fr

In the style of the 50s, this beautiful 72m2 self-contained flat is located in the heart of the town of Autun. , Family home in Autun town centre, close to all the cultural and tourist attractions, 50s style, sleeps 7, 2nd floor. This family home in the city centre is close to all the cultural and tourist attractions. In the style of the 50s, this beautiful 72m2 self-contained flat is on the 2nd floor of our large house. It sleeps 7 (3 bedrooms). It is located : - 5 min walk from the town centre

🔑 3 | 🛏 7 | 🚲 |



## MAISON CONSTANT - APPARTEMENT DE CHARME A AUTUN - GINGKO

url vide

22 Rue de l'Arquebuse - 71400 AUTUN

, Maison Constant, a place to relax and enjoy. A place for those who no longer want to choose between a weekend in nature and the comforts of the city. Located right in the centre of Autun, in a beautiful old property, nestled in a park full of century-old trees, including a magnificent Giant Sequoia, our flat is a bubble in the heart of a green setting. You will be staying in one of the pavilions, carefully renovated in the spirit of the builder of the property, who had a passion

### Rates

One night (apartment) : 75 € - 95 €

Week (apartment) : 450 € - 550 €



🔑 1 | 🛏 4 | 📶 | 📺 |



## MAISON CONSTANT - APPARTEMENT DE CHARME - SEQUOIA

url vide

Rue de l'Arquebuse - 71400 AUTUN

, Maison Constant, a place to recharge your batteries and enjoy life to the full. A place for those who no longer want to choose between a weekend in nature and the comforts of the city. Located right in the centre of Autun, in a beautiful old property, nestled in a park full of hundred-year-old trees, including a magnificent giant Sequoia, our flat is a bubble in the heart of a green setting. You will be staying in one of the pavilions, carefully renovated in the spirit of the 50s and 60s. ,

### Rates

One night (apartment) : 75 € - 90 €

Week (apartment) : 450 € - 550 €



🔑 1 | 🛏 4 | 📶 | 📺 |



## LA PETITE MAISON

Rue Bouteiller - 71400 AUTUN

, Completely renovated 17th century cottage for 2 people located in the historic district between town and country. Just 200 metres from the Cathedral and its restaurants, and 500 metres from the town centre. Hiking, swimming pool, golf, mountain biking and historic monuments await you. Parking on site. , Completely renovated 17th-century cottage for 2 people, located in the historic district. Completely renovated 17th century cottage for 2 people located in the historic district between town and country. Just 200 metres from the

### Rates

One night (apartment) : 68 € - 85 €

🔑 1 | 🛏 2 | 📶 | 🚲 |



# Gîtes and furnished accommodation

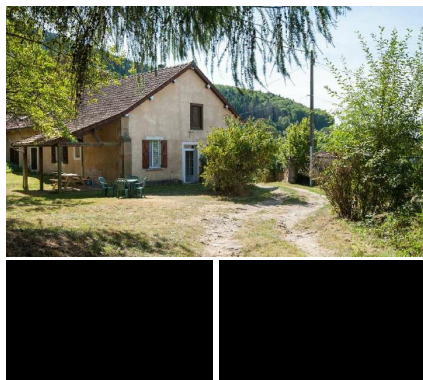
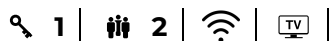


## LE TROP PARFAIT

23 Petite Rue Marchaux - 71400 AUTUN  
+33 9 74 74 70 64 -  
[airbnb.com/h/le-trop-parfait](https://airbnb.com/h/le-trop-parfait)



, Enjoy a beautiful flat in the town centre. , Perfect for two people on a weekend break. Enjoy a beautiful flat in the town centre.



## LES REVIREYS ★★

Les Revirets - 71400 AUTUN  
+33 3 85 52 77 26 -  
[guy.de.bontin@wanadoo.fr](mailto:guy.de.bontin@wanadoo.fr)

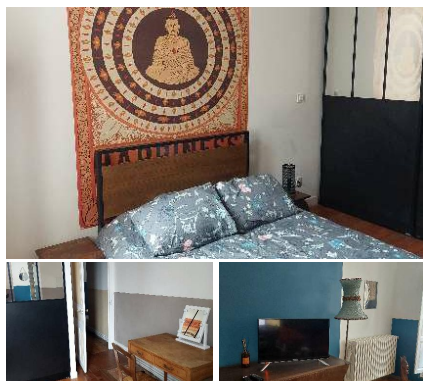
[url vide](#)

### Rates

Per week low season : 310 €, Per week high season : 385 €  
Per week middle season : 340 €



Sheep & cattle breeders in sustainable agriculture (Charolais & Salers cows), Béatrice & Guy welcome you to an old fully restored "stable-saddle room" dating from the 19th century - once linked to a notable Morvandelle farmhouse of which an elegant " mansion "located close - nestled on their small family farm (separated in peace). In the heart of a peaceful mini rural hamlet nestled on the edge of the vast wild forest of Planoise (real "green lung" of the southern foothills of the Morvan...



## GITE BAMBOU

8 rue des Bancs - 71400 AUTUN  
- [info@autunwineoclock.com](mailto:info@autunwineoclock.com)

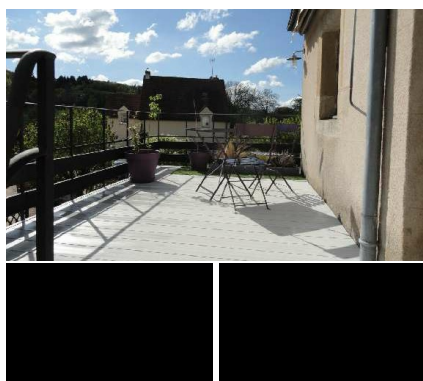
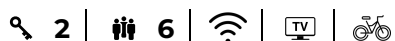
[url vide](#)

### Rates

One night (apartment)



Recently renovated, this large flat will seduce you. Cleverly laid out, the sleeping area is separated from the living room. Each bedroom has its own shower room and the beds are arranged to ensure privacy. Wifi, TV, washing machine, dishwasher, everything is there to ensure you have a pleasant stay. The exterior will allow you to enjoy the beautiful days. Flat with character in the upper districts. Recently renovated, this large flat will seduce you. Cleverly laid out, the sleeping area is separated from the living room. Each room has its own



## CHEZ AURELIE

22 Rue du Faubourg St Blaise - 71400 AUTUN

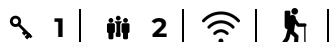
[url vide](#)

### Rates

Per week low season : 250 €, Per week high season : 380 €  
Per week middle season : 300 €

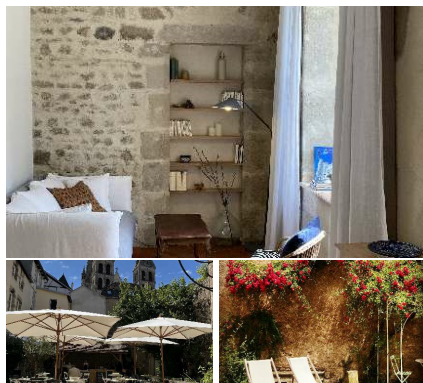


, At the foot of the Ursulines tower, on the edge of the woods and 300m from Autun's upper quarters, this warm, lovingly decorated gîte is on the 1st floor of the owners' home, with its own entrance. Aurélie and Pierre-Henri are passionate about their town and will be delighted to advise you on how to discover Autun and the surrounding area. At the bedside of the Ursulines tower, at the edge of the woods and 300m from the upper districts of Autun, this warm and carefully decorated gîte is located on the 1st floor of the owners' house,





# Gîtes and furnished accommodation



## LE COCAND · GITES DE CHARME · TALLEYRAND

3 Rue Cocand - 71400 AUTUN  
victoiredeganay@gmail.com

url vide

### Rates

One night  
(apartment) : 95 €



, Located in a beautiful town house in Autun's historic district called "Le Cocand", this recently renovated flat, with a view of the cathedral, features raw, natural materials for a soft, cosy atmosphere. Its location close to pedestrian streets and restaurants means you can enjoy the hustle and bustle of the city, while being just a stone's throw from the surrounding countryside. You can also enjoy the inner courtyard or the events on offer at Le Cocand. , Charming gîte in the historic



## MEUBLE "CHEZ REINE" ★★

23 rue aux raz - 71400 AUTUN  
bollottefrancois@yahoo.fr

### Rates

One night  
(apartment) : 67 € - 68 €

, Charming, authentic furnished apartment with garden views, very quiet, perfect base for enjoying the Burgundy region, right in the town centre at the foot of the cathedral. Charming, authentic furnished apartment with garden views, very quiet, perfect base for enjoying the Burgundy region, right in the town centre at the foot of the cathedral.



## LE COCAND · GITES DE CHARME · BONAPARTE

3 Rue Cocand - 71400 AUTUN

url vide

### Rates

One night  
(apartment) : 110 €



Located in a beautiful mansion in Autun's historic district called "Le Cocand", just a few steps from the Cathedral, this flat allows you to enjoy the bustle of the city, with restaurants and pedestrian streets nearby, while being just a stone's throw from the surrounding countryside. You can also take advantage of the inner courtyard and the events on offer at Cocand. , Town flat in a beautiful town house in Autun's historic quarter. This 45m2 flat is laid out like a loft: the rooms



## LE MAGNOLIA ★★

Saint-Pierre - 71400 AUTUN

-

webiteo-71-V4-  
francois.gliteo.fr/reso/etape1.php?  
NUM=845&INSTANCE=gites71&OPE=CRTBOUF



### Rates

Per week low season :  
300 €, Per week high  
season : 430 €  
Per week middle  
season : 380 €



Both retired farmers (raising Charolais cows), Jean-Paul & Marie-Thérèse welcome you to an authentic little Morvan "farmhouse" typical of the early 20th century, completely restored, quietly located on the south-facing hillside on their former family farm . Total tranquility, nestled on the confines of the famous two-thousand-year-old city of Autun, in the heart of a charming little residential "village". literally "corner





# Gîtes and furnished accommodation



## ARHOMEPLUS-HUNIC 2

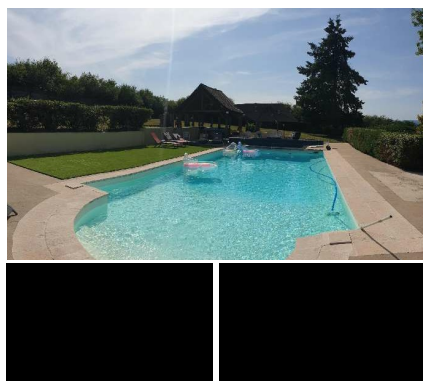
1 Rue du Bourg - 71400 AUTUN  
- [www.arhomeplus-hunic.fr](http://www.arhomeplus-hunic.fr)



Contemporary country authenticity with modern comforts. The 2-room gîte comprises a living room with sofa bed, a bedroom with television, a fully-equipped kitchenette and a bathroom. Small terrace overlooking private courtyard. Wi-Fi access and all amenities nearby. After a good walk or mountain bike ride, book your relaxation session on site. Gîte with 1 living room with sofa bed, 1 bedroom with double bed, kitchenette, bathroom, wifi. Nicole is a practitioner at a traditional Chinese medicine "well-being" health centre

### Rates

Per week low season : 550 €, Per week high season : 550 €  
Per week middle season : 550 €



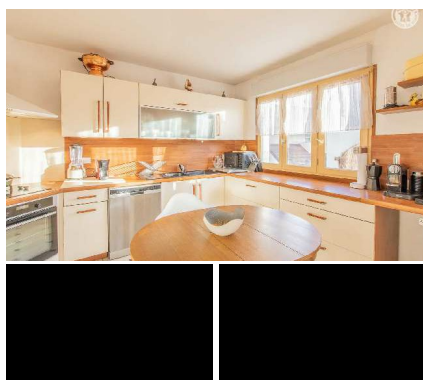
## LE DOMAINE

1 Chemin du Cerveau - 71400 AUTUN  
- [info@gites71.com](mailto:info@gites71.com)

url vide

### Rates

Per week low season : 450 €, Per week high season : 750 €  
Per week middle season : 750 €



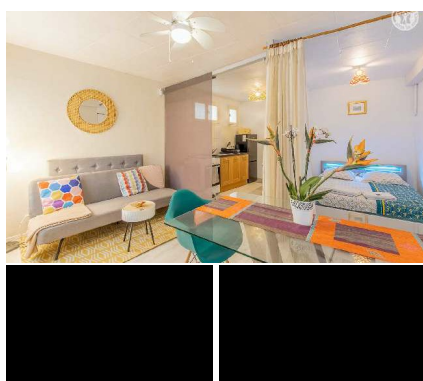
## ARHOMEPLUS-HUNIC 1

1 Rue du Bourg - 71400 AUTUN  
- [info@gites71.com](mailto:info@gites71.com)

url vide

### Rates

Per week low season : 900 €, Per week high season : 900 €  
Per week middle season : 900 €



## ARHOMEPLUS-HUNIC 3

1 Rue du Bourg - 71400 AUTUN  
+33 3 85 29 55 60 - [webitea-71-V4-francois.glitea.fr/reso/etape1.php?NUM=3136&INSTANCE=gites71&OPE=CRTBOU](http://webitea-71-V4-francois.glitea.fr/reso/etape1.php?NUM=3136&INSTANCE=gites71&OPE=CRTBOU)



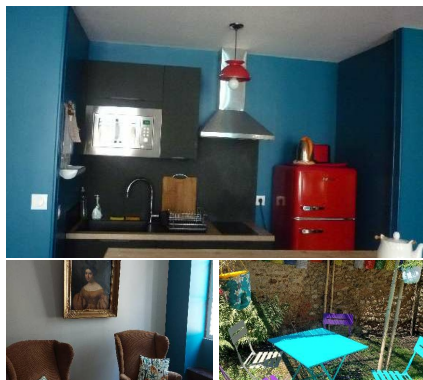
Practitioner of a "well-being" health center in traditional Chinese medicine (reflexology & "Edonis" massage) based on site, Nicole welcomes you to a fully restored 19th century town house, nestled on the edge of a quiet alley within a peaceful residential area close to the city center (all amenities), the Vallon lake (100 ha of "nature sport" area with nautical base) & the city's rich leisure facilities ( including

### Rates

Per week low season : 480 €, Per week high season : 480 €  
Per week middle season : 480 €



# Gîtes and furnished accommodation



## GITE NENUPHAR

8 Rue des Bancs - 71400 AUTUN

[www.autunwineoclock.com](http://www.autunwineoclock.com)

, Our 17th century house is located in a pedestrian street at the foot of the Saint-Lazare cathedral, known as the "Hauts quartiers". Restaurants, museums, bars, theatre, market are all within walking distance. Close to the wine route, archaeological sites and the Morvan gateway, you can vary your interests from this location. The flat is spacious, bright and comfortable with a western view of the medieval rooftops and accessible by a private staircase. , Town house with garden, Although in the centre of the old town, you will be able



🔑 1 | 👤 2 | 📶 | 📺



## GITES DE L'ARBALETE ★★★

13A rue de l'Arbalète - 71400 AUTUN

[url vide](#)

, Welcome to Autun, in the heart of the fortified town and at the gateway to the Morvan lakes. This 87 m<sup>2</sup> (1,772 sq ft) south-facing flat is on the 1st floor in an enclosed courtyard with garage. Ideally located just 2 minutes from pedestrian streets, museums and the Cathédrale Saint Lazare. Comfort and authenticity are the order of the day right from the entrance hall, leading to a lovely fitted kitchen (oven, dishwasher, washing machine, etc.), a large living room and 2 pleasant bedrooms. Enj... , Welcome to Autun, in the heart of



🔑 2 | 👤 4 | 📶 | 📺 | 🚲



## LE CHAPITRE

11 Place du Terreau - 71400 AUTUN

[url vide](#)

, Pleasant town house ideally situated at the foot of St Lazare cathedral, in the heart of the historic centre of the town of Autun. This character building has been listed as a historic monument since 2017 and was completely restored in 2022. , Pleasant town house classified as a historical monument, ideally located at the foot of the St Lazare cathedral. In the heart of the historic centre of Autun, at the foot of the St Lazare cathedral, this pleasant town house is a listed building. It was completely renovated in 2022. Ideally located, you will



🔑 2 | 👤 6 | 📶 | 📺



## GITE BERTHE ET JACQUES ★★★

30 Grande Rue Chauchien - 71400 AUTUN

- [pat-fan@live.fr](mailto:pat-fan@live.fr)

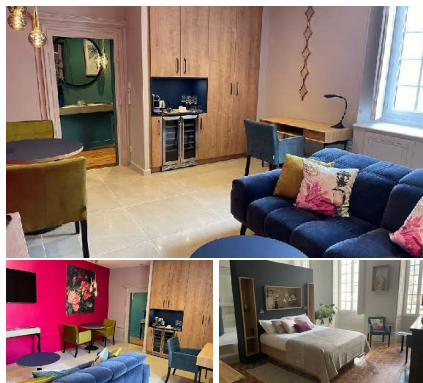
Charming flat in Autun between the city centre and the cathedral. Close to pedestrian streets and all shops. Modular gîte for 2 to 6 people. Price: please contact us. Has an interior courtyard with a dining area, deckchairs and sun lounger. Reception from 4pm on arrival days. Departure from 10am.



🔑 3 | 👤 6 | 📶 | 📺 | 🚲



# Gîtes and furnished accommodation



## LIEU DIVIN - LA SUITE

6 Place Saint-Louis - 71400 AUTUN

url vide



, Superb two-room suite with a surface area of 55m². This luxury rental offers a living room equipped with a desk (connected to the fiber), sofa, TV, wine cellar ... etc. ... and a room with shower, sauna and jacuzzi with a breathtaking view of the Cathedral. , Superb two-room suite. Jacuzzi, sauna, connected desk, two televisions, sound bar... and view of the Cathedral. Would you like to visit Autun and relax in a suite combining refinement and comfort? Le Lieu Divin invites you to discover its suite with spa where you can relax in the sauna



## LIEU DIVIN - APPARTEMENT

6 Place Saint-Louis - 71400 AUTUN

[lieudivin.fr/appartement-autun/](http://lieudivin.fr/appartement-autun/)



Air-conditioned flat with breathtaking views of both the Cathedral and the Morvan. It consists of an entrance hall, two bedrooms, a living room (with a queen size sofa bed and a fully equipped kitchen), and two bathrooms. With a maximum of seven beds, it is located in the heart of the historic centre, opposite the Cathedral. , Air-conditioned 7-bed flat in the heart of the historic centre, with stunning views of both the Cathedral and the Morvan. For your stays with family or friends, we offer a holiday flat with reversible air conditioning,



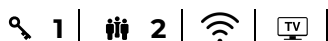
## LIEU DIVIN - STUDIO

6 Place Saint-Louis - 71400 AUTUN

url vide



If you are travelling alone or as a couple, we offer a comfortable studio apartment. This holiday flat has a small entrance area with a dressing room, a very comfortable double bed, LED TV, reversible air conditioning. The studio is equipped with a fitted kitchen (dishwasher, microwave grill, induction hob, extractor hood and fridge, etc.), a shower room (WC, towel dryer, hairdryer, etc.), a bathroom with shower and toilet, a washing machine and a toilet. Air-conditioned studio with all comforts, located at the foot of Autun Cathedral If you

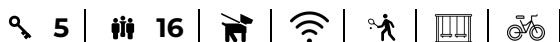


## MEUBLE "FRAGNY BURGUNDY" ★★

1 Rue des Blanchots - 71400 AUTUN



Lodging in the middle of nature for 16 people. Ideally located between the Burgundy Grand Cru wine route and the Morvan Regional Natural Park, spacious house on the edge of the forest 6 km from the town of Autun. A pool table, a huge garden full of huts, a house with a soul, everything is there to meet! Rental from two nights on the WE and 3/4 nights during the week (estimate to be established together). Linen provided.



# Gîtes and furnished accommodation



## LE CLOS DE L'OUCHE

Rue du Champ du Moulin - 71400 AUTUN

, Gîte for 6 people located 5 km from the town of AUTUN in a quiet hamlet, large enclosed garden and private parking, children's games, boules pitch, table tennis table, beautiful terraces with lounge and dining area, barbecue. Large living room, 2-seater sofa bed, home cinema TV. Fully equipped kitchen. One bedroom with double bed, another on the mezzanine with 2 single beds. Shower room with washing machine, separate WC. Bed linen and towels provided. Baby equipment on request. Fishing, gree... , Gîte for 6 people, fully



## LA ROMAINE

29 Place du Champ de Mars - 71400 AUTUN

City Furniture



## AUTUN

Creator of "organic" cosmetics, passionate about nature, ecology and world cuisine, Geneviève welcomes you to a charming Morvandelle house from 1870, carefully restored, nestled in the peace at the end of a dead end alley, at the edge of a vast wild forest (sheltering a natural source located at 300m) and edge of a bucolic meadow. At the heart of a peaceful little rural hamlet nestled on the hillside exposed on the southern foothills of the Morvan massif at the gateway to the Regional Natural...



### Rates

Per week low season : 350 €, Per week high season : 450 €  
Per week middle season : 180 € - 390 €



## AUTUN

Practitioner of a "well-being" health center based on site (traditional Chinese medicine), Nicole welcomes you in a fully restored 19th century town house, nestled on the edge of a quiet alley in a peaceful residential area in a stone's throw from the city center (all amenities), the Vallon lake (100 ha of "nature sport" with nautical base) & the various leisure facilities in the city (including golf). Backed by the vast wild forest of Planoise (a true "green lung" of the southern foothills of...



### Rates

Per week low season : 330 €, Per week high season : 330 €  
Per week middle season : 330 €



# Gîtes and furnished accommodation



🔑 2 | 🛏 4 | 🚰 |

## AUTUN

Practitioner of a "well-being" center based on site (traditional Chinese medicine), Nicole welcomes you in a fully restored 19th century town house, nestled on the edge of a quiet alley in a peaceful residential area just a stone's throw away from the city center & amenities, the Vallon lake (100 ha of "nature sport" with nautical base) & various leisure facilities (including golf). Backed by the vast wild forest of Planoise (a true "green lung" of the southern foothills of the Morvan massif,...

### Rates

Per week low season : 600 €, Per week high season : 600 €  
Per week middle season : 600 €



🔑 0 | 🛏 2 | 🚰 |

## AUTUN

Practitioner of a "well-being" health center in traditional Chinese medicine (reflexology & massage "Edonis") based on site, Nicole welcomes you in a fully restored 19th century town house, nestled on the edge of a quiet alley within a peaceful residential area a stone's throw from the city center (all amenities), the Vallon lake (100 ha of "nature sports" area with nautical base) & the rich leisure facilities that the city has (including golf). Backed by the vast wild forest of Planoise (a...

### Rates

Per week low season : 380 €, Per week high season : 380 €  
Per week middle season : 380 €



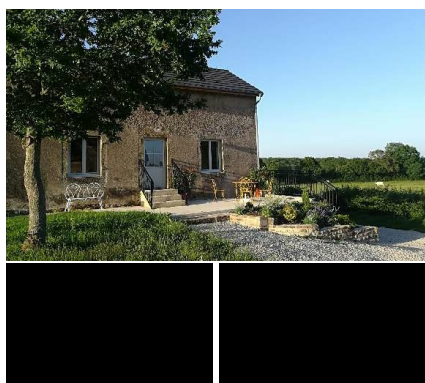
🔑 1 | 🛏 3 |

## AUTUN

Passionate amateur golfers, Virginie & Jean-Marc welcome you to their elegant "eighties" pavilion, nestled peacefully in a peaceful mini residential hamlet located in a dead end 600m from the golf course, on an 8 hectare property (very largely "natural"). Total tranquility in the countryside, nestled on the hillside on an intimate, ultra-neat landscaped park of 10,000m² including an extremely rare 14x6m swimming pool (shared with the owners / shower & large partly sheltered terrace), in the...

### Rates

Per week low season : 390 €, Per week high season : 690 €  
Per week middle season : 390 €



🔑 2 | 🛏 4 | 📶 | 🚶 |

## LE CHALET

3 Impasse de la Fontaine - 71400 AUXY

url vide

Organic farmers (dairy breeders and laying hens), Élisabeth and Eric welcome you to a delightful "farm gîte" set up in a former 19th century hunting lodge, completely restored with care, nestled in the countryside 4 km from the small typical village of Auxy, on their 90 ha family farm (visit possible with fun activities for children such as collecting eggs, milking cows or the possibility of giving a bottle to the little calves & the promise of fresh eggs and milk from the farm!). Absolute calm...

### Rates

Per week low season : 360 €, Per week high season : 460 €  
Per week middle season : 390 €



# Gîtes and furnished accommodation

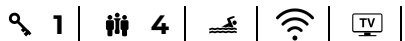


## L'ARCHE DE NOE - GITE BLEUET ★★★

url vide

4, route du Pontot - 71400 AUXY  
- [gite.chnotes.cleaud@wanadoo.fr](mailto:gite.chnotes.cleaud@wanadoo.fr)

Gîte of 80 m² overlooking nature. Has a garden. From 2 to 4 persons.



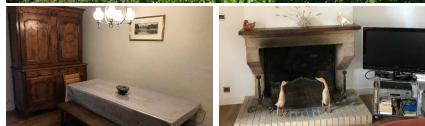
## SCI RBB

Hameau les Fourneaux - 71190 BRION  
[yoda.69@orange.fr](mailto:yoda.69@orange.fr)

, Located in Brion, 10 minutes from the town of Autun, in the middle of the countryside in absolute calm, our hamlet is composed of 3 independent houses with 7 bedrooms (14 people). Ideal place to gather family and friends Numerous leisure facilities are available to the occupants: - Swimming pool 10x5, tennis, basketball, ball game, badminton, - Games room with: billiards, pinball, table football, library. Large enclosed plot of land in the countryside with a clear view of Mont Beuvray, . Ideal for families in Brion, 10 minutes from

### Rates

Per week low season : 4500 € - 4950 €, Per week high season : 4500 € - 4950 €  
Per week middle season : 4500 € - 4950 €



## MEUBLE "ISABELLE ANDRE"

12 Rue de Charas - 71190 BRION  
[iso71190@gmail.com](mailto:iso71190@gmail.com)  
[www.airbnb.fr/rooms/18646143?check\\_in=2019-11-14&check\\_out=2019-11-19&source\\_impression\\_id=p3\\_1573576018\\_MW](http://www.airbnb.fr/rooms/18646143?check_in=2019-11-14&check_out=2019-11-19&source_impression_id=p3_1573576018_MW)  
Holiday home in the country



## IMMERSIONS EN FORET

url vide

Le Grand Champmartin - 71190 BROYE  
+33 6 20 88 14 57 - [julie.gouiran@gmail.com](mailto:julie.gouiran@gmail.com)

, 2 days in a green setting in the Morvan forest to reconnect with nature. On the programme each day: yoga and meditation practices, creative practices, time for sharing, etc. free time in the forest. Places available for each session: 3 people Session from 17 to 19 November: 1 place available Session from 08 to 10 December: 3 places available Possibility of opening other slots for you (2 people) if you are not available on these dates. , Gîte open only during retreats and subject to availability during the opening period indicated. 2

### Rates

One night (apartment) : 80 € - 100 €





# Gîtes and furnished accommodation



## LES EDUENS ★★★

2 Place des Eduens - 71190 BROYE  
+33 3 85 54 38 70 -

url vide

### Rates

Per week low season :  
285 €, Per week high  
season : 375 €  
Per week middle  
season : 315 €



, Hélène & her husband Sébastien, both passionate about nature, welcome you to an authentic 19th century country house steeped in history (once linked to a cloister), carefully restored and situated on the edge of a small "green" square. In the heart of a peaceful typical village renowned for its rich Neolithic past (6000 year old menhir & 5 Celtic funerary monoliths on site) ., Hélène & her husband Sébastien, both passionate about nature, welcome you in an authentic 19th century country house. Practitioner of "shiatsu" (Chinese



## GITE DE CHAPEY

Lieu-dit Chapey - 71190 BROYE

Large capacity gîte in the countryside



## LE PETIT EDEN ★

Valouze - 71540 CHISSEY-EN-MORVAN

-  
[webiteo-71-V4-  
francois.gliteo.fr/reso/etape1.php?  
NUM=1634&INSTANCE=gites71&OPE=CRTBOU](http://webiteo-71-V4-francois.gliteo.fr/reso/etape1.php?NUM=1634&INSTANCE=gites71&OPE=CRTBOU)



Farmers and sheep breeders, Eric & Françoise welcome you to an authentic traditional Morvan farmhouse from 1881, completely renovated, nestled in the quiet countryside of the upper Morvan on their small family farm (without any nuisance). Calm & tranquility in the heart of a typical small agricultural & rural hamlet nestled on the hillside, in the hollow of a splendid preserved gentle mountain cirque. offering the

### Rates

Per week low season :  
320 €, Per week high  
season : 350 €  
Per week middle  
season : 320 €



## LE REFUGE DE VALOUZE ★

Valouze - 71540 CHISSEY-EN-MORVAN

url vide

### Rates

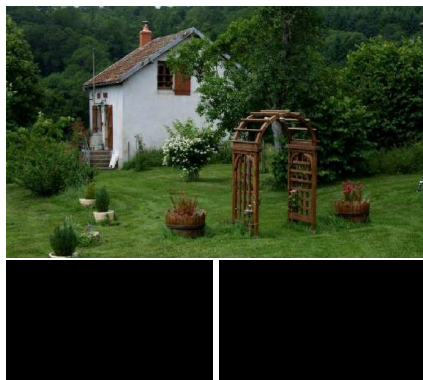
Per week low season :  
320 €, Per week high  
season : 350 €  
Per week middle  
season : 320 €



Farmers and sheep breeders, Eric & Françoise welcome you to authentic old stables from the end of the 19th century, completely rehabilitated, nestled in the quiet countryside of the upper Morvan on their small family farm (without any nuisance), on the immediate edge of pasture with peaceful sheep as privileged neighbors. Calm & tranquility in the heart of a typical small agricultural & rural hamlet perched on the hillside, in the hollow of a splendid preserved gentle mountain cirque, offering...



# Gîtes and furnished accommodation



## LE TILLEUL

Valouze - 71540 CHISSEY-EN-MORVAN  
+33 3 86 76 17 75 -

url vide

### Rates

Per week low season :  
390 €, Per week high  
season : 390 €  
Per week middle  
season : 390 €



English by birth and Burgundian by adoption, Michelle & John welcome you to an authentic Morvan residence from the end of the 19th century, perfectly restored and revisited into a comfortable country resort, nestled peacefully in the hollow of a charming gentle mountain valley, on the edge of forests, fields & meadows. Peaceful little agricultural & rural hamlet in the upper Morvan overlooking the bucolic Ternin valley & the typical village of Chissey-en-Morvan, the northernmost of...



## LA MAISON DE MAMIE - STRAWBERRY HILL ★★★★★

url vide

4085, Route Michel de Chaugy - 71540  
CHISSEY-EN-MORVAN



, THE DEAL OF THE CENTURY: 2, 3 or 4 weeks during June at a single price for up to 13 people! THE DEAL OF THE CENTURY : Two, three or 4 weeks during June 2024 at a single price for up to 13 people! Come and enjoy the fine days and mild temperatures of June, with a private heated swimming pool, a large park and a gracious luxury house with all modern comforts! (Some conditions apply, exceptional offer for the month of JUNE). La Maison de Mamie: A really quiet and

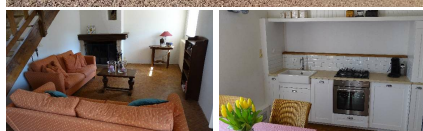


## GITE "LA CURE"

291, rue de La Garde - 71540 CHISSEY-EN-MORVAN



, Gîte in the countryside. Gîte in the countryside. Gîte in the countryside.



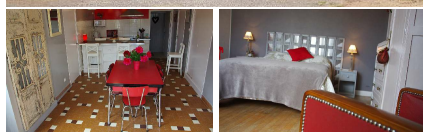
## GITE DU VIEUX COLOMBIER ★★★

3 rue d'Alibour - 71360 COLLONGE-LA-MADELEINE

[www.giteduvieuxcolombier.fr](http://www.giteduvieuxcolombier.fr)



Manor house of an old farm, renovated in 2013 with an enclosed courtyard and near a pond with possibility of no kill fishing. Gîte located between vineyards (20 km from Beaune) and the Morvan mountains





# Gîtes and furnished accommodation



## GITE DE LA BILLARDE

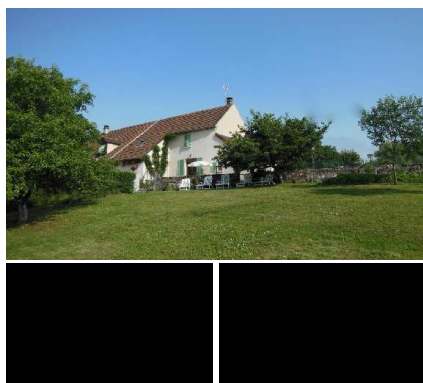
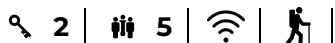
8 rue de La Billarde - 71490 COUCHES  
- [info@gites71.com](mailto:info@gites71.com)

url vide

Eliane and Pascal open the doors to this contemporary house, nestled in the Chalonnaise countryside, located 3 km from the historic city of Couches. Do not miss its famous 13th century castle, whose legend says that Marguerite de Bourgogne would have taken over the place for a few days! Stroll around the village to admire the Romanesque church and its woodwork, the castle of the Tour Guérin, the priory - a monastery that became an abbey then a priory, the Templar house, the 7 menhirs of Epoigny...

### Rates

Per week low season : 430 €, Per week high season : 500 €  
Per week middle season : 430 €



## LES LILAS ★★★

Les Gobillots - 71490 COUCHES

- [webiteo-71-V4-](http://webiteo-71-V4-francois.giteo.fr/reso/etape1.php?NUM=1085&INSTANCE=gites71&OPE=CRTBOU)

[francois.giteo.fr/reso/etape1.php?](http://francois.giteo.fr/reso/etape1.php?NUM=1085&INSTANCE=gites71&OPE=CRTBOU)

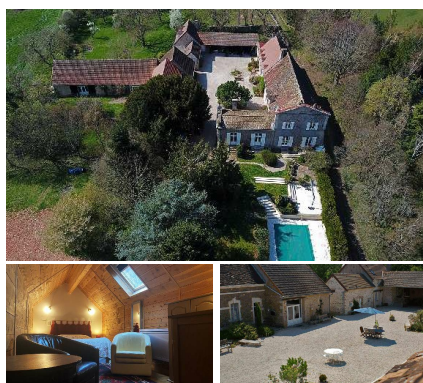
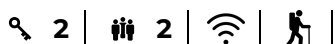
[NUM=1085&INSTANCE=gites71&OPE=CRTBOU](http://francois.giteo.fr/reso/etape1.php?NUM=1085&INSTANCE=gites71&OPE=CRTBOU)

Old house with beautiful view, completely renovated, very comfortable, located near the owner in a charming hamlet in the Couchois vineyard. Wireless. Electric heating. Ground floor: living room with dining area and lounge (wood stove), fitted kitchen, pantry, laundry room, separate toilet. 1st floor: 2 bedrooms (double bed 160x200cm / 1 double bed 140x190cm) with private bathroom (shower/Wc).



### Rates

Per week low season : 495 €, Per week high season : 595 €  
Per week middle season : 495 €



## GITE LE NID ★★★

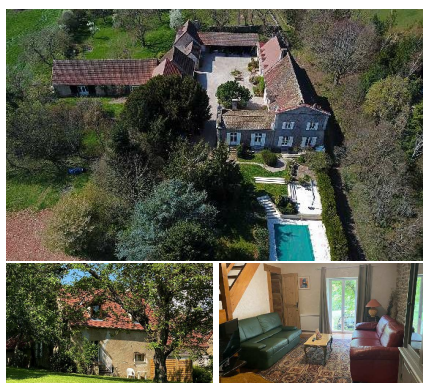
6 route de Chalencey - 71490 COUCHES  
[www.domainelesbertrands.com](http://www.domainelesbertrands.com)



Formerly a wine farm located in Couches in the Autun - Beaune - Chalon-sur-Saône triangle, the estate is laid out in a U-shape around a large inner courtyard. It is a quiet and restful place in a green setting of several hectares. All of the guest rooms and gîtes have been completely renovated and retain the charm of the old while providing a restful, comfortable and spacious setting on several hectares of land in the heart of the Burgundy countryside and vineyards. Some rooms still retain...

### Rates

Week (apartment) : 635 €



## GITE L'ECUREUIL ★★★

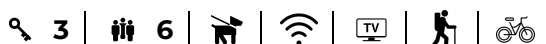
6 route de Chalencey - 71490 COUCHES

url vide

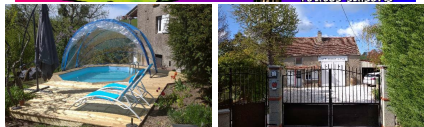
Formerly a wine farm located in Couches in the Autun - Beaune - Chalon-sur-Saône triangle, the estate is laid out in a U-shape around a large inner courtyard. It is a quiet and restful place in a green setting of several hectares. All of the guest rooms and gîtes have been completely renovated and retain the charm of the old while providing a restful, comfortable and spacious setting on several hectares of land in the heart of the Burgundy countryside and vineyards. Some rooms still retain...

### Rates

Week (apartment) : 1025 €



# Gîtes and furnished accommodation



## GITES LES COURTAILLARDS ★★★ 1 Rue des Courtaillards - 71490 COUCHES

url vide



Come and spend a few days in the heart of Burgundy, between the Châteaux, vineyards and lakes of the Morvan. On our property, the Gîte sleeps up to 6 (4+2) people in peaceful comfort on the heights of COUCHES, on a hillside in the heart of nature. The typical ground floor features an open hearth, a living room, a shower room and a covered terrace. Sleeping accommodation: 2 bedrooms upstairs, 1 double bed (140cm) and 2 single beds (90cm), the sofa converts to a double bed (140cm) if required. ... Come and spend a few days in the heart



## CHATEAU DE MONTPATEY Rue du Château - 71490 COUCHES [montpatey@gmail.com](mailto:montpatey@gmail.com)

url vide



## MEUBLE "LES ROCHES" 8 La Perdrière - 71490 CREOT -

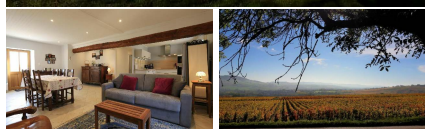
url vide

### Rates

Week (apartment) :  
from 800 €



The family gîte is located in a large late 19th century Burgundy mansion on a sunny hillside, facing the small village of Créot, overlooking the Cozanne valley. You will be able, with friends, family, or in groups, to find yourself in a magnificent rural site surrounded by vineyards and meadows, to radiate in our region.



## LA BOURGONIE ★★★ 17 Rue de l'Eglise - 71490 CREOT -



[webitea-71-V4-francois.glitea.fr/reso/etape1.php?NUM=1807&INSTANCE=gites71&OPE=CRTBOU](http://webitea-71-V4-francois.glitea.fr/reso/etape1.php?NUM=1807&INSTANCE=gites71&OPE=CRTBOU)

19th century country house steeped in history (former miner's house) located in a charming little typical & authentic village nestled in the heart of the wine-growing countryside. Very calm. Splendid unspoiled natural setting in the heart of the Maranges vineyards, at the crossroads of the world famous Chalonaise and Beaune coasts. Magnificent natural and rural landscapes. varied between wooded hills. vineyards. groves.

### Rates

Per week low season :  
470 €, Per week high  
season : 630 €  
Per week middle  
season : 530 €





# Gîtes and furnished accommodation



## LA BOURGONIE ★★★

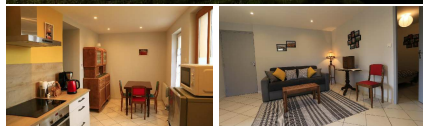
17 Rue de l'Eglise - 71490 CREOT  
- [info@gites71.com](mailto:info@gites71.com)

[url vide](#)

19th century country house steeped in history (former miner's house) located in a charming little typical & authentic village nestled in the heart of the wine-growing countryside. Very calm. Splendid unspoiled natural setting in the heart of the Maranges vineyards, at the crossroads of the world famous Chalonnaise and Beaune coasts. Magnificent natural and rural landscapes, varied between wooded hills, vineyards, groves, forests and meadows. Very comfortable cottage fitted out in a neat...

### Rates

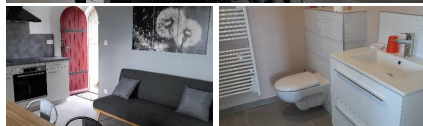
Per week low season : 420 €, Per week high season : 510 €  
Per week middle season : 470 €



## GITE L'AUBEPINE

26 Rue de Drousson - 71400 CURGY

This small house was originally a forest house. Now a holiday home, it has undergone a number of transformations and extensions to become a pretty little gîte. Set in the middle of meadows, on the edge of the forest, with forest paths nearby for lovely walks. Approximately 6 kilometres from Autun, a town of art and history with its shops and also the Burgundy vineyards nearby, the first vineyards are around thirty kilometres away. In the middle of meadows, close to the forest with paths for walks. The farm raises Charolais and



## LA PORIOTTE ★★★

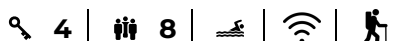
11 Rue de la Poriotte - 71400 CURGY  
+33 3 85 29 55 60 -

[url vide](#)

Owner of the neighboring guest house located a stone's throw away, Danièle welcomes you to a beautiful contemporary country villa (dating from 2003) nestled in peace, on the south-east hillside, well exposed, on the edge of a vast circus of meadows (with Aubracs & Charolais as peaceful neighbours) within a mini rural hamlet overlooking the village of Curgy (a listed Romanesque church from the 11th century). Nestled in the heart of the Morvandelle Autunoise countryside, 10 km from the majestic...

### Rates

Per week low season : 580 €, Per week high season : 800 €  
Per week middle season : 650 €



## LES ALOUETTES

10 Rue des Alouettes - 71400 CURGY

[webitea-71-V4-](http://webitea-71-V4-)

[francois.glitea.fr/resa/etape1.php?](http://francois.glitea.fr/resa/etape1.php?)

[NUM=3178&INSTANCE=gites71&OPE=CRTBOU](http://NUM=3178&INSTANCE=gites71&OPE=CRTBOU)



, Very comfortable, ultra-spacious gîte with a warm country feel and contemporary accents. Cosy and warm. Comfortable 5-seater spa (sheltered in an annex). Beautiful, unobstructed views over the surrounding countryside with the Morvan mountains in the background. Superb panoramic views and scenery. Layout: Detached house on 3 levels, sleeps 12. Very comfortable, ultra-spacious gîte with a warm country feel and contemporary accents. Cosy and warm. Authentic. fully

### Rates

Per week low season : 1444 €, Per week high season : 1444 €  
Per week middle season : 1444 €



# Gîtes and furnished accommodation



## UN PTIT COIN DE PARADIS

Le Cerveau - 71400 CURGY  
[unptitcoindeparadis@gmail.com](mailto:unptitcoindeparadis@gmail.com)

url vide

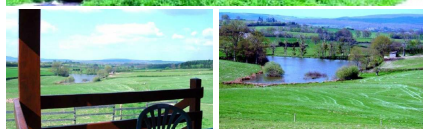
Comfortable caravan nestled on the edge of a wood (private forest with marked paths to walk or mountain bike) & edge of meadow (with horses as close neighbours), in the hollow of a vast clearing of bocage overlooking a bucolic private fishing pond (among the 2 on the property) on a 70 ha ranch (horse & cattle breeding Charolais). Nestled in peace in the middle of the hilly countryside within a sublime preserved green setting (wildlife observable), this unusual domain 100% oriented "nature &...

### Rates

Per week low season : 390 €, Per week high season : 500 €  
 Per week middle season : 450 €



🔑 0 | 🛏 4 | 🐾 | ♿



## UN PETIT COIN DE PARADIS

Le Cerveau - 71400 CURGY  
[webiteo-71-V4-francois.gliteo.fr/reso/etape1.php?NUM=914&INSTANCE=gites71&OPE=CRTBOUR](http://webiteo-71-V4-francois.gliteo.fr/reso/etape1.php?NUM=914&INSTANCE=gites71&OPE=CRTBOUR)



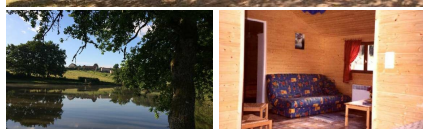
Small chalet nestled on the edge of a wood (private forest with marked paths to walk or mountain bike) & edge of meadow (with horses as close neighbours), in the hollow of a vast clearing of bocage overlooking a bucolic private fishing pond (among the 2 on the property) on a 70 ha ranch (horse & cattle breeding Charolais). Nestled in peace in the middle of the hilly countryside within a sublime preserved green setting (wildlife observable), this unusual domain 100% oriented

### Rates

Per week low season : 410 €, Per week high season : 520 €  
 Per week middle season : 480 €



🔑 2 | 🛏 4 | 🐾 | ♿



## UN PETIT COIN DE PARADIS

Le Cerveau - 71400 CURGY

url vide

Small chalet nestled on the edge of a wood (private forest with marked paths to walk or mountain bike) & edge of meadow (with horses as close neighbours), in the hollow of a vast clearing of bocage overlooking a bucolic private fishing pond (among the 2 on the property) on a 70 ha ranch (horse & cattle breeding Charolais). Nestled in peace in the middle of the hilly countryside within a sublime preserved green setting (wildlife observable), this unusual domain 100% oriented "nature & healing"...

### Rates

Per week low season : 410 €, Per week high season : 520 €  
 Per week middle season : 480 €



🔑 2 | 🛏 4 | 🐾 | ♿



## LA GRANGE AGAPE

5 D Route de Collonges les Cha - 71400 CURGY  
[info@gites71.com](mailto:info@gites71.com)

url vide

Patricia & Alain open the doors of a carefully restored authentic 19th century bread oven (once linked to the neighbouring farmhouse they now occupy) nestled on a hillside, on a south-east facing slope, in the heart of a peaceful little rural residential hamlet, 4 km from the typical village of Curgy (& its listed 11th century Romanesque church) & 8 km from the majestic Château de Sully (16th century / listed MH), one of the most beautiful French private châteaux open to the public. , Calm & total tranquility, nestled in the

### Rates

Per week low season : 455 €, Per week high season : 525 €  
 Per week middle season : 490 €



🔑 1 | 🛏 4 | ♿



# Gîtes and furnished accommodation



## DOMAINE DE PEON - GITE DES ARTS

23 Rue de la Côte - 71400 CURGY  
+33 3 83 31 25 97 - [cody.54@hotmail.fr](mailto:cody.54@hotmail.fr)  
[domainedepeon.fr.gd](http://domainedepeon.fr.gd)



The Domaine de Péon in Cury, situated in a 47 hectare property, in a quiet area, is an invitation to a change of scenery, with a certain comfort, 4km from Autun. The garden of Péon is a preserved territory where nature holds a place of choice. This "green paradise" is a real nature reserve. This garden received the 1st prize of Saône-et-Loire of the flowered gardens (2019 and 2020). The gîte is located in a country style house, warm and atypical. Facilities and services: 2 fishing ponds on...



## CURGY

Patricia & Alain open the doors of an authentic 19th century bread oven restored with care (formerly linked to the neighboring farmhouse they occupy today) nestled on the side of a hill, on a south-east facing slope, in the heart of a peaceful little rural residential hamlet, 4 km from the typical village of Cury (& its listed 11th century Romanesque church) & 8 km from the majestic Château de Sully (16th century / listed MH), one of the most beautiful French private castles open to the...

### Rates

Per week low season : 400 €, Per week high season : 450 €  
Per week middle season : 400 €

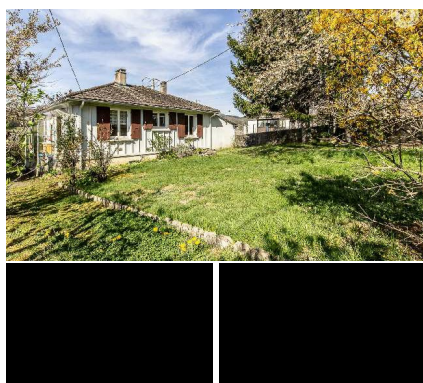


## CURGY

Authentic country house from the end of the 19th century, fully restored with care, nestled in a quiet area at the end of a dead end, on the hillside "in a balcony" & panoramic "belvedere" on a south-facing hillside, on the borders of a peaceful little residential hamlet, 3.5 km from the typical village of Cury (11th century listed Romanesque church). Absolute tranquillity, nestled in the hilly Autunoise Morvandelle countryside, in the hollow of a splendid preserved rural setting of fields &...

### Rates

Per week low season : 1090 €, Per week high season : 1290 €  
Per week middle season : 1090 €



## LA PETITE MAISON

8 Le Grand Pré - 71550 CUSSY-EN-MORVAN  
- [chaletsdecussy@orange.fr](mailto:chaletsdecussy@orange.fr)  
[webitea-71-V4-francois.glitea.fr/reso/etape1.php?NUM=1902&INSTANCE=gites71&OPE=CRTBOU](http://webitea-71-V4-francois.glitea.fr/reso/etape1.php?NUM=1902&INSTANCE=gites71&OPE=CRTBOU)



Annie and Daniel welcome you to this old post-war miner's house steeped in history (formerly linked to the Epinac mines) rehabilitated as a gîte, overlooking a magnificent preserved valley on the southern exposed hillside, on the very edge of bocage. In a residential hamlet adjoining the picturesque peaceful small typical Morvandiau village of Cussy-en-Morvan nestled at an altitude of 478m. in a splendid unspoiled setting

### Rates

Per week low season : 350 €, Per week high season : 400 €  
Per week middle season : 350 €



# Gîtes and furnished accommodation



## CHALET NORBERT

Maison Bourgoux - 71550 CUSSY-EN-MORVAN

+33 3 85 29 55 60 -

[webitea-71-V4-](http://webitea-71-V4-francois.glitea.fr/reso/etape1.php?NUM=1903&INSTANCE=gites71&OPE=CRTBOU)

[francois.glitea.fr/reso/etape1.php?](http://francois.glitea.fr/reso/etape1.php?NUM=1903&INSTANCE=gites71&OPE=CRTBOU)

[NUM=1903&INSTANCE=gites71&OPE=CRTBOU](http://francois.glitea.fr/reso/etape1.php?NUM=1903&INSTANCE=gites71&OPE=CRTBOU)

Annie and Daniel welcome you in a delightful "mountain cottage" type chalet leaning against the south-west hillside exposed at the very edge of meadows where the Charolais horses and cows graze peacefully from a small neighboring family farm. owners (possible visit of the farm with fun and magical activities for children such as attending the milking or



### Rates

Per week low season : 300 €, Per week high season : 350 €  
Per week middle season : 300 €



2 | 4 | | |



## CHALET DANIEL

Maison Bourgoux - 71550 CUSSY-EN-MORVAN

+33 3 85 54 60 97 -

Annie and Daniel welcome you in a delightful "mountain cottage" type chalet leaning against the south-west hillside exposed at the very edge of meadows where the horses and Charolais cows graze peacefully from a small neighboring family farm. owners (possible visit to the farm with fun and magical activities for children such as milking or the chance to approach cows, horses, ponies, etc.). Small typical residential hamlet nestled at an altitude of 500m in the hollow of a gentle valley of...

url vide

### Rates

Per week low season : 300 €, Per week high season : 350 €  
Per week middle season : 300 €



2 | 4 | | |



## LES CHATS ZETS

n°3 les Chazets - 71550 CUSSY-EN-MORVAN

+33 6 68 99 08 97 -

Authentic Morvan farmhouse dating from the early 19th century, carefully restored to a high standard, nestled in a peaceful setting on the south-western hillside and on the edge of the meadows, in the heart of a small residential hamlet flanked by wooded hills overlooking the picturesque village of Cussy-en-Morvan at an altitude of 500m. A pleasantly landscaped setting - relaxing & restful - nestled in the hollow of a green valley of the Haut Morvan, a delightful preserved setting of nature...

url vide

### Rates

Per week low season : 480 €, Per week high season : 610 €  
Per week middle season : 530 €



2 | 6 | | |



## LA PETITE FERME

15 Maison Bourgoux - 71550 CUSSY-EN-MORVAN

+33 3 85 29 55 60 -

Authentic traditional Morvandiau farmhouse from the 19th century (fully restored inside and having retained the charm of its original facade), located away and without nuisance on a small family farm (Charolais cattle breeding, some grazing in two steps for the happiness of the children). Peace and quiet in a peaceful rural hamlet nestled on the south-eastern hillside, on a bucolic plateau of meadows flanked by wooded hills, nestled at an altitude of 500m on the heights of the picturesque...

url vide

### Rates

Per week low season : 360 €, Per week high season : 410 €  
Per week middle season : 380 €



2 | 4 | | |



# Gîtes and furnished accommodation



## GITE LA PETITE OUCHE MORVAN

16, rue de la Vallée - 71550 CUSSY-EN-MORVAN

- [christine.b.briere@free.fr](mailto:christine.b.briere@free.fr)

url vide



In the heart of the Morvan Regional Natural Park, for lovers of horse riding, hiking, mountain biking, art(s) and history(s) lovers, and all others... "La Petite Ouche" welcomes you for a night, a weekend, a week or more. Located in a green setting, in the heart of a peaceful hamlet, this character gîte for 2 to 12 people, independent, spacious, warm, decorated with care, combines the authenticity of an old Morvan house (fireplace with bread oven, granite stairs, French ceilings, stone walls...

🔑 3 | 🛏 12 | 🐕 | 🚶 | 🚰 | 🚲



## YOURTE LISA KIEVITS

4 Frétoy - 71550 CUSSY-EN-MORVAN

[l.kievits@gmail.com](mailto:l.kievits@gmail.com)

Nice yurt in the country.



🔑 1 | 🛏 4 | 🚰



## CUSSY-EN-MORVAN

Authentic multi-centenary Morvan farm from the beginning of the 19th century, carefully restored according to the rules of the art, nestled peacefully on the south-west hillside & on the edge of meadows, in the heart of a small residential hamlet flanked by wooded hills dominating 500m at altitude the picturesque typical village of Cussy-en-Morvan. Pleasant landscaped setting - relaxing & restful - nestled in the hollow of a green valley of Haut Morvan, a delightful preserved setting of nature...

### Rates

Per week high season : 540 €

Per week middle season : 300 € - 450 €

🔑 2 | 🛏 6



## MEUBLE GILLISSEN

Les Bouaux CUSSY-EN-MORVAN

In the middle of the "lungs of France", where the air is the purest and the Burgundian life is festive... is this centuries-old hamlet, embraced by history. We offer you a pleasant stay in the middle of nature in a quiet atmosphere. , In the middle of the "lungs of France", where the air is the purest and Burgundian life is in full swing... In the middle of the "lungs of France", where the air is the purest and the Burgundian life is festive... is this centuries-old hamlet, embraced by history. We offer you a pleasant stay in the middle of nature in a quiet

🛏 8

# Gîtes and furnished accommodation



## MEUBLE "JOSEPH VAN RIET"

N°20 Montcimet - 71550 CUSSY-EN-MORVAN  
[josannama@gmail.com](mailto:josannama@gmail.com)

Lodging in the heart of the Morvan Regional Natural Park.



## LE BALCON DU MORVAN

D256 - 71190 DETTEY  
 - [lerelaisdedettey@orange.fr](mailto:lerelaisdedettey@orange.fr)

, Extend your stay in Burgundy with our fully equipped gîte, which sleeps 1 to 7 people. , Extend your stay in Burgundy with our fully equipped gîte, which sleeps 1 to 7 people. Extend your stay in Burgundy with our fully equipped gîte, which sleeps 1 to 7 people.



### Rates

Per week low season :  
 from 495 €, Per week  
 high season : from  
 600 €

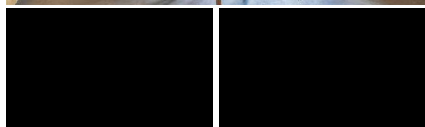


## LA GRANGE

6 Rue du Pont - 71490 DRACY-LES-COUCHES  
 - [info@gites71.com](mailto:info@gites71.com)

[url vide](#)

Jennifer & Éric open the doors of an authentic 19th century wine press, carefully restored according to the rules of the art, located on a property steeped in history (former wine estate, perfectly rehabilitated). Total tranquility on the edge of a lane & meadow (welcome peaceful Charolais cows in season), in the heart of a picturesque Couchois wine village nestled on the south-east facing hillside dominated by an elegant 13th & 16th century castle nestled on a mound feudal (comprising one of...



### Rates

Per week low season :  
 590 €, Per week high  
 season : 760 €  
 Per week middle  
 season : 690 €

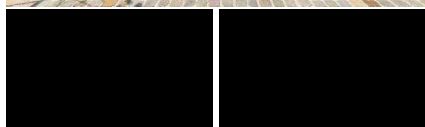


## LA VALLERIE

le Bourg - 71400 DRACY-SAINT-LOUP  
 +33 6 76 86 67 74 - [nathalie-roizot@orange.fr](mailto:nathalie-roizot@orange.fr)

[url vide](#)

Nathalie & Benoit welcome you in an elegant traditional 19th century "farmhouse" -type village house, fully restored with care in a comfortable resort, quietly located in the heart of a peaceful & picturesque little village in the Autun countryside . Nestled between two bucolic rivers full of fish, this former mining town with a world-renowned deposit (a few vestiges remain a few kms away), cradle of schist mining in Autunois, has a restful, rural & natural setting - between forests, bocage...



### Rates

Per week low season :  
 620 €, Per week high  
 season : 745 €  
 Per week middle  
 season : 630 €





# Gîtes and furnished accommodation



1 | 3 |

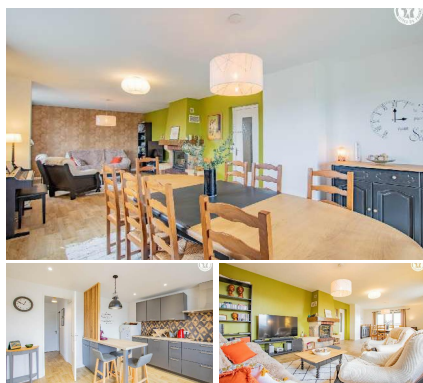
## AU NUMERO QUATRE

4 rue du Puits Carnot - 71360 EPERTULLY  
+33 6 52 06 67 20 -

, Newly refurbished 38 m² flat in Epertully, between Côte-d'Or and Saône-et-Loire. Just 3 minutes from Nolay and 30 minutes from Beaune, Chalon-sur-Saône, Autun and Le Creusot. You're on the border between the Burgundy wine region and the Morvan. If you're looking for peace and quiet and love nature, you've come to the right place. Walks, hikes, cycle tours, wine tastings and a variety of visits are all on offer. , "Au numéro quatre": gîte for 3 people in the commune of Epertully, between the Côte Viticole and the Morvan. Hello, and

### Rates

One night  
(apartment) : 65 € -  
75 €  
Week (apartment) :  
455 € - 504 €



4 | 8 |

## LOGIS AGHEMA

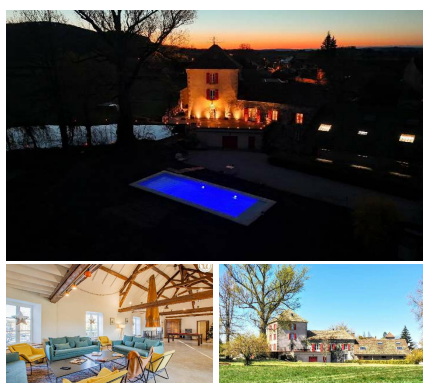
7 Rue de la Chapelle - 71360 EPERTULLY

url vide

Authentic 19th century country house, fully restored, located on a well-exposed southern hillside, in the heart of a peaceful little typical village, a stone's throw from the first vineyards and the neighboring forest. Perched on a hill overlooking the green Cozanne valley, in the heart of the Hautes Côtes de Beaune wine-growing countryside adjoining the Maranges & Couchois, historic cradle of the Carnot family (famous dynasty of French politicians including Sadi Carnot who was president of the...

### Rates

Per week low season :  
590 €, Per week high  
season : 650 €  
Per week middle  
season : 590 €



9 | 15 |

## LE MOULIN DES DUCS

3 Avenue Maréchal de Lattre de Tassigny -  
71360 EPINAC  
+33 7 82 78 91 23 -

url vide

This authentic 14th-century mill, steeped in history and completely restored, is set in the countryside on a bucolic little river, in a residential hamlet next to the market town of Epinac, which has been awarded the "Station Verte" label. Authentic mill of character from the 14th century, steeped in history & completely rehabilitated, located in the countryside on a bucolic little river, in a residential hamlet neighboring the village of Epinac labeled "Station Verte" (many amenities including supermarket). Pleasant preserved setting, nestled

### Rates

Per week low season :  
4200 €, Per week high  
season : 7200 €  
Per week middle  
season : 5300 €



4 | 12 |

## VILLA 1848

6 Avenue Maréchal de Lattre de - 71360  
EPINAC  
- [contact@domaine-des-ducs.com](mailto:contact@domaine-des-ducs.com)

url vide

Elegant bourgeois house with character dating from 1848 - steeped in history & very carefully restored. Elegant bourgeois residence with character from 1848 - steeped in history & very carefully restored - nestled in the countryside in a residential hamlet a stone's throw from a very large wild national forest, not far from the typical and commercial village of Epinac (numerous amenities on site including supermarket), major mining town from the end of the 19th century (industrial site for glassworks & coal production) associated with one of the

### Rates

Per week low season :  
3500 €, Per week high  
season : 4000 €  
Per week middle  
season : 4000 €



# Gîtes and furnished accommodation



## LA MAISONNETTE

15 Rue des Pyrénées - 71360 EPINAC

+33 3 85 29 55 60 -

[webiteo-71-V4-](http://webiteo-71-V4-)

[francois.glitea.fr/reso/etape1.php?](http://francois.glitea.fr/reso/etape1.php?)

[NUM=3061&INSTANCE=gites71&OPE=CRTBOU](http://NUM=3061&INSTANCE=gites71&OPE=CRTBOU)

Authentic 19th century miners' house steeped in history - completely restored with care inside - nestled on the edge of a small, quiet, little-passed alley (one-way) in the heart of the former workers' quarters (now a peaceful residential area), adjacent to the centre of the charming, typical & commercial village of Epinac. Authentic 19th century miners' house steeped in history - fully restored inside - nestled on the edge



### Rates

Per week low season : 409 €, Per week high season : 421 €  
Per week middle season : 404 €



## LE CHANT DE LA RIVIERE

Le Gué de Champy - 71360 EPINAC

- [info@gites71.com](mailto:info@gites71.com)

Annie welcomes you to a comfortable contemporary house nestled on the edge of a small, quiet dead-end lane, in the hollow of a pleasant unspoilt rural setting on the edge of bocage & meadows, a stone's throw from the Drée (and a ford) bucolic fish-filled river. Quiet residential area adjoining the center of the charming typical & commercial town of Epinac (many amenities on site), major mining town from the end of the 19th century (industrial site for the production of glassware & coal)...

[url vide](#)

### Rates

Per week low season : 550 €, Per week high season : 590 €  
Per week middle season : 550 €



## MEUBLE DUPREY YANN

12 Place Charles de Gaulle - 71360 EPINAC

Lodging of stay in Epinac

[url vide](#)



## UN AIR DE PAISIBLITE

8 Place Charles de Gaulle - 71360 EPINAC

[burgniesdubois@gmail.com](mailto:burgniesdubois@gmail.com)

Furnished holiday home in Epinac.

[url vide](#)





# Gîtes and furnished accommodation

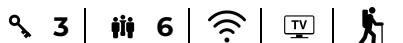


## LA MAISON DU VAL

16 Rue Maréchal de Lattre de Tassigny -  
71360 EPINAC

[alinesimon.bridault@orange.fr](mailto:alinesimon.bridault@orange.fr)

Character gîte in a family house located between Autun and Beaune



## LE MOULIN DES DUCS ★★★★★

5 Avenue Maréchal de Lattre de Tassigny -  
71360 EPINAC

[www.airbnb.fr/rooms/48603030?](http://www.airbnb.fr/rooms/48603030?source_impression_id=p3_1622022987_wiKGUw06-07&check_out=2021-06-10)

[source\\_impression\\_id=p3\\_1622022987\\_wiKGUw06-07&check\\_out=2021-06-10](http://source_impression_id=p3_1622022987_wiKGUw06-07&check_out=2021-06-10)



Old mill from 1343 recently renovated and classified as a 5 star tourist accommodation for 5 years since April 2021.

Accommodation: Spacious accommodation of 450 m² in an old mill created in 1343 by order of Eudes IV of Burgundy. Inside recently renovated, you will find: On the first level: - A 90 m² living room with its cathedral ceiling, central fireplace, sofas and billiard table. - A kitchen of 55 m² with a gas piano, a table



## CHATEAU DE VAUX - MAISON DE LA TOUR

Château de Vaux - 71190 ETANG-SUR-ARROUX

[chateaudevaux.morvan@gmail.com](mailto:chateaudevaux.morvan@gmail.com)

[chateaudevauxmorvan.com/](http://chateaudevauxmorvan.com/)



An old stone house entirely renovated during the winter of 2022, it combines authenticity and modernity to offer you a unique stay. 3 bedrooms, 3 bathrooms, king-size beds, fully equipped kitchen and living room, covered parking, private and equipped garden, access to the castle's swimming pool, With its stone tower, this atypical gîte in the heart of nature has been completely renovated to offer a unique holiday. This



## CHATEAU DE VAUX - MAISON MONTCHARMONT

Château de Vaux - 71190 ETANG-SUR-ARROUX

[chateaudevaux.morvan@gmail.com](mailto:chateaudevaux.morvan@gmail.com)

url vide



, With its authentic exteriors and French-style ceiling, this former farmhouse converted into a typical Morvan country house is ideal for holidaymakers who love the countryside and wide-open spaces. This gîte has a very large living room and a large terrace, perfect for getting together with family and friends. Equipped with king-size beds, barbecue and outdoor accessories. , Country house, in an unusual setting in the heart of nature. Ideal for lovers of peace and green. With its



# Gîtes and furnished accommodation



## CHATEAU DE VAUX - MAISON DE LA FERME

url vide

13 rue de Vaux - 71190 ETANG-SUR-ARROUX  
- [chateaudevaux.morvan@gmail.com](mailto:chateaudevaux.morvan@gmail.com)

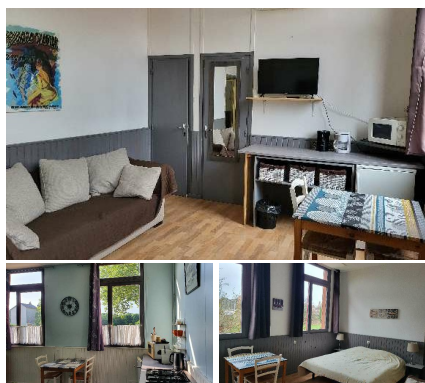
, This former farmhouse has been renovated to offer you accommodation with a view of 100% nature, with cows as its only neighbours. The two-storey house comprises a large living room with dining area, a fitted kitchen and plenty of storage space. Also on the ground floor is a bathroom with shower and separate toilet. Upstairs are three bedrooms in the old combs, a second bathroom with bath and a children's play area. Enjoy a private, fully-equipped garden!

### Rates

One night  
(apartment) : 250 €  
Week (apartment) :  
1470 €



🔑 3 | 🛏 6 | 🚿 | 📺 | 🚲



## MEUBLE DU CAMPING DES 2 RIVES

26 Rue de Toulon - 71190 ETANG-SUR-ARROUX

- [www.des2rives.com/contact/](http://www.des2rives.com/contact/)

Located in a campsite on the banks of the Arroux river, this furnished room is equipped with crockery, fridge, microwave, coffee machine... Common kitchen, shower, sanitary and washing machine areas.

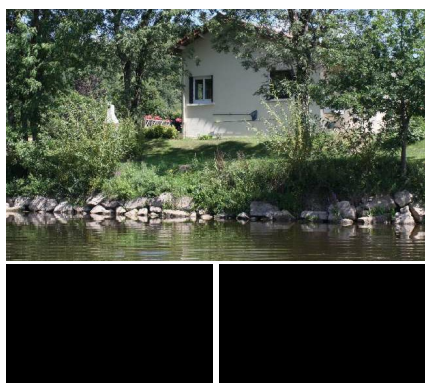


### Rates

One night  
(apartment) : 38 € -  
48 €



🔑 3 | 🛏 2 | 📶 | 🚿



## LE PECHEUR

43 Rue de Brion - 71190 ETANG-SUR-ARROUX

+33 3 85 29 55 60 -

[webitea-71-V4-](http://webitea-71-V4-)

[francois.glitea.fr/reso/etape1.php?](http://francois.glitea.fr/reso/etape1.php?)

NUM=1144&INSTANCE=gites71&OPE=CRTBOU

Christian, an amateur fisherman, opens the doors of this former fisherman's bungalow, completely rehabilitated and located on the edge of the Arroux, 1 km from the village of Etang-sur-Arroux. Privileged lodging for fishermen who will be able to get to know the different occupants of Arroux: pike, trout, pikeperch, perch, carp... (card required). Christian will be able to discuss with you while giving you some advice! For



### Rates

Per week low season :  
340 €, Per week high  
season : 480 €  
Per week middle  
season : 370 €



🔑 1 | 🛏 2 | 🐕 | 📶 | 🚿



## CHALETs ETANG SUR ARROUX

10 A rue du Moulin - 71190 ETANG-SUR-ARROUX

+33 6 13 63 34 13 -

[maxvir.daumalle@gmail.com](mailto:maxvir.daumalle@gmail.com)

In the commune of Etang-sur-Arroux, 45 m² chalet set in enclosed grounds. Close to all amenities and 15 minutes from Autun. 1 bedroom with 3 single beds and 1 bedroom with 1 double bed. Shower room and separate WC. Kitchen area opening onto living room. Covered terrace facing the countryside. Picnic table available in the garden. A parking space in the enclosed grounds. Internet access and a range of electrical appliances. Baby cot and high chair. Swimming pool

🔑 2 | 🛏 5 |



# Gîtes and furnished accommodation



## LA CHOUETTE

39 Route de la Drée - 71540 IGORNAY  
[lachouette71@orange.fr](mailto:lachouette71@orange.fr)

Apartment in the country.

7 | |



## LA PLACE

La Place - 71400 LA CELLE-EN-MORVAN

[url vide](#)

Farmers and sheep breeders (whose family farm you can visit 1 km away), Sylvain & Brigitte welcome you to a comfortable gîte in a charming, fully restored 19th century country house, nestled peacefully in a bucolic green setting on the edge of fields and meadows, within a small residential hamlet bordering the center of the town. Nestled in the heart of a magnificent preserved natural and rural area, in the heart of the Morvan Natural Park, between gentle mountains, wooded hills, bocages, lakes...

### Rates

Per week low season : 300 €, Per week high season : 450 €  
 Per week middle season : 400 €



2 | | | |



## LE CHENE

La Place - 71400 LA CELLE-EN-MORVAN  
 +33 3 85 29 55 60 -

[url vide](#)

Farmers and sheep breeders (from which you can visit the family farm 1 km away), Sylvain & Brigitte welcome you in a comfortable gîte in an exotic country house from the beginning of the 20th century, fully restored, nestled in a peaceful setting in a small residential hamlet bordering the center of the village, on the edge of fields and meadows. Nestled in the hollow of a magnificent preserved natural and rural setting, in the heart of the Morvan Natural Park, between gentle mountains, wooded...

### Rates

Per week low season : 300 €, Per week high season : 450 €  
 Per week middle season : 400 €



2 | | | |



## LA PETITE FOLIE DE CLOTHILDE

150 Route de Chateau-Chinon - 71400 LA CELLE-EN-MORVAN  
 - [info@gites71.com](mailto:info@gites71.com)

[url vide](#)

Marylène welcomes you to an authentic Morvan residence from the beginning of the 20th century, completely restored with care, located in the heart of the Autun countryside in the very heart of the Morvan Natural Park, on the edge of the road & on the edge of meadows, a stone's throw from the surrounding woods, at in a residential hamlet adjoining the heart of the small village of Celle-en-Morvan, home to the "Roseraie des Villages de France", an exceptional "rose garden", one of the most...

### Rates

Per week low season : 250 €, Per week high season : 290 €  
 Per week middle season : 250 €



1 | | | |

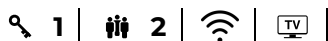
# Gîtes and furnished accommodation



## GITE "MORVAN"

13, rue de l'Eglise Saint-Agnan - 71400 LA CELLE-EN-MORVAN

Gite for 2 people.



## LA MAISON NEUVE ★★★

La Maison Neuve - 71990 LA COMELLE

- [webiteo-71-V4-](http://webiteo-71-V4-français.giteo.fr/reso/etape1.php?NUM=1724&INSTANCE=gites71&OPE=CRTBOU)

[français.giteo.fr/reso/etape1.php?](http://webiteo-71-V4-français.giteo.fr/reso/etape1.php?NUM=1724&INSTANCE=gites71&OPE=CRTBOU)

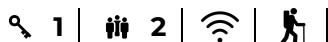
[NUM=1724&INSTANCE=gites71&OPE=CRTBOU](http://webiteo-71-V4-français.giteo.fr/reso/etape1.php?NUM=1724&INSTANCE=gites71&OPE=CRTBOU)

In the heart of the Morvan Regional Natural Park, isolated in the middle of meadows and facing a beautiful pond, this pretty stone house, typical of the region, invites calm and ensures a total change of scenery. Completely renovated, modern equipment rubs shoulders with noble materials, such as tiled floors and exposed stones. Composition: Single storey: living room (TV, DVD player, fireplace, convertible sofa



### Rates

Per week low season : 410 €, Per week high season : 470 €  
Per week middle season : 410 €



## GITE DE L'ECUSSON

La Maison Rouge - 71990 LA COMELLE

- [gitedelecusson@orange.fr](mailto:gitedelecusson@orange.fr)

Situated in an old farmhouse, this spacious detached house, with very well equipped living spaces, awaits you in a quiet setting with an unobstructed view of the Morvan. Capacity 7 to 11 persons thanks to 4 extra beds.



## L'ECHAPPEE

Huspoil - 71990 LA COMELLE

Our gîte is our dream guest house. We have put all our heart into restoring it and making it as pleasant as we like to find it on our trips





# Gîtes and furnished accommodation



## GITE "LES PERROTS"

Route du Grand Vernay - 71990 LA GRANDE-VERRIERE

We rent a charming renovated farmhouse in the heart of Burgundy with exceptional views, located 15 minutes from the town of Autun (Saône-et-Loire), 45 minutes from the TGV station (Le Creusot). Very peaceful and relaxing setting in the heart of the countryside: sleeps 10 - 6 bedrooms. Charming renovated farmhouse with exceptional views: 6 bedrooms - 9 beds-10 travellers. We rent a charming renovated farmhouse in the heart of Burgundy with exceptional views, located 15 minutes from the town of Autun (Saône-et-Loire), 45 minutes

### Rates

One night (apartment) : 250 €  
Week (apartment) : 1400 €

🔑 6 | 🛏 10 | 📶



## L'ATELIER

Rue de la Cure - 71990 LA GRANDE-VERRIERE  
+33 3 85 82 52 69 - [fawtp.virely@orange.fr](mailto:fawtp.virely@orange.fr)

Pierre opens the doors to his father's former roofer-zinc workshop, completely restored and located in the heart of the village of La Grande-Verrière. At 200 m, fly fishing enthusiasts can indulge their passion on a "No-Kill" fishing course. Take a tour of the village of the village known to be one of the oldest in the Morvan. Stop for a few moments in front of the gates of the Château du Vouchot (private) dating from the 12th century and which became a modern château in the 18th century; in...

url vide

### Rates

Per week low season : 250 €, Per week high season : 340 €  
Per week middle season : 280 €



🔑 2 | 🛏 6 | 🐕 | 🚶



## GITE DES DUES ★★

11 chemin des Dués - 71990 LA GRANDE-VERRIERE

Jeannette opens the doors to this old farmhouse, completely refurbished - within her property comprising guest rooms - located in a quiet hamlet, 4 km from the village of La Grande-Verrière. 1 km away, fishing enthusiasts can indulge their passion in the Le Méchet river. Take a tour of the village of this village known to be one of the oldest in the Morvan. Stop for a few moments in front of the old manor house and then in front of the Romanesque church with a 13th century tomb, carved in...

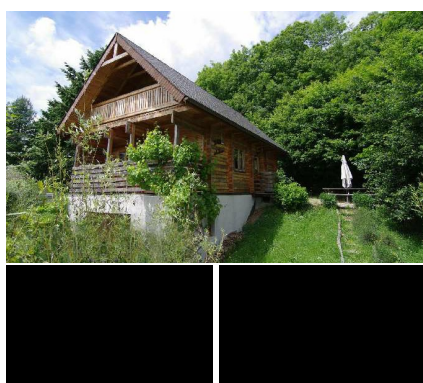
url vide

### Rates

Per week low season : 250 €, Per week high season : 340 €  
Per week middle season : 290 €



🔑 2 | 🛏 6 | 🐕 | 🚶



## CHALET DE LA SOURCE

79 Route du Crot ou Meunier - 71990 LA GRANDE-VERRIERE  
+33 3 85 82 49 16 -

Lovely contemporary chalet (built in 2004) backing onto a "balcony" & "panoramic belvedere", on a well-exposed south-east hillside, in a peaceful rural residential hamlet overlooking the verdant Méchet valley (& its fish-filled river). Calm & total tranquility in the heart of the Morvan countryside & its gentle mountains, in the very heart of the park and the Morvan massif, nestled on the immediate edge of the woods in the hollow of a bucolic valley preserved with fields & meadows surrounded...

url vide

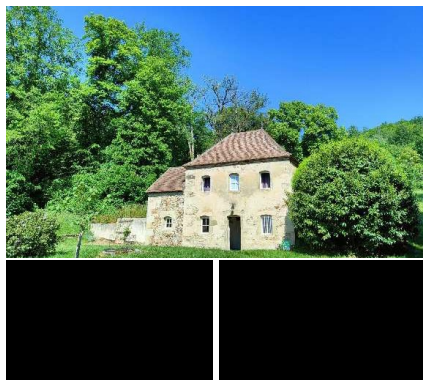
### Rates

Per week low season : 530 €, Per week high season : 595 €  
Per week middle season : 580 €



🔑 2 | 🛏 5 | 🐕 | 🚶

# Gîtes and furnished accommodation



## LE FRUITIER

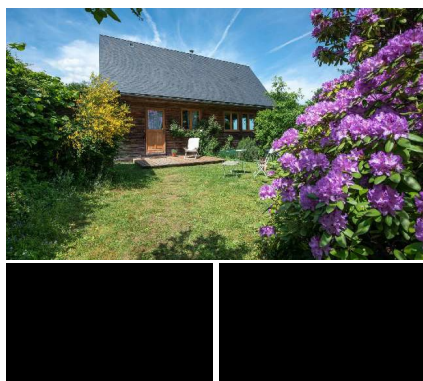
Bouton - 71990 LA GRANDE-VERRIERE

url vide

Lovely authentic agricultural outbuilding from the beginning of the 19th century, fully restored, nestled on a vast private property, largely wooded, in a peaceful "mini hamlet" made up of 2 gîtes. Calm & total tranquility in the hilly Morvan countryside, nestled on the immediate edge of the forest, on the south-eastern hillside overlooking a vast plateau of wooded meadows. Very beautiful open view of the Morvan countryside and the town of Autun from the site (not far from the gîte). Nestled at...

### Rates

Per week low season : 540 €, Per week high season : 660 €  
Per week middle season : 540 €



## LA COLOMBIERE

Les Brilles - 71990 LA GRANDE-VERRIERE

url vide

, Camille welcomes you to a contemporary chalet fitted out according to the principles of eco-construction, nestled in the middle of nature on the hillside, overlooking a bucolic mini valley in the hollow of an intimate clearing protected from view, in the spirit of a hunting cabin revisited as a comfortable holiday home. Peace and quiet in the middle of the Morvan countryside. Camille welcomes you in a contemporary chalet fitted out according to the principles of eco-construction nestled in the heart of nature, on the side of a hill, overlooking

### Rates

Per week low season : 686 €, Per week high season : 940 €  
Per week middle season : 780 €



## BOISSEAU

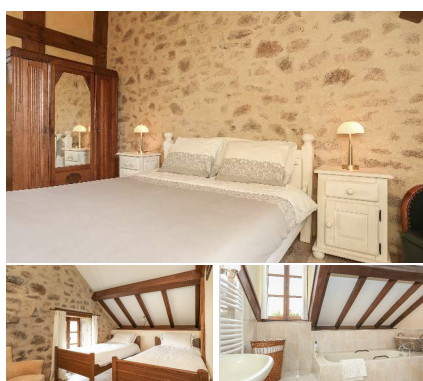
Boisseau - 71990 LA GRANDE-VERRIERE  
- info@gites71.com

url vide

In the Morvan Park, a wooded and very quiet site in the heart of the hiking trails. Exceptional view on the Mont Beuvray, spacious gîte on the first floor of a renovated 17th century Morvan farmhouse. , Bright, spacious gîte on the 1st floor of an old Morvan farmhouse. Very quiet and in the heart of nature. Lovely traditional Morvan farm from the 17th century, steeped in history & carefully restored, located in absolute calm, in a "panoramic belvedere", in the hollow of a natural setting that is certainly "out of the ordinary", 100% rejuvenating. Total

### Rates

Per week low season : 395 €, Per week high season : 575 €  
Per week middle season : 485 €

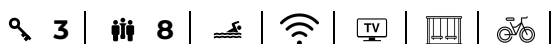


## LA VIEILLE MAISON ★★★

La Chauvotte - 71990 LA GRANDE-VERRIERE  
+33 3 85 82 49 71 -

url vide

The gîte La Vieille Maison is situated in a natural stone house and is designed for 6 to 7 people. There is a bread service, free wifi access and hiking possibilities in the surroundings. There is also a heated, chlorine-free and salt-free swimming pool with natural filtration and bio UV.





# Gîtes and furnished accommodation

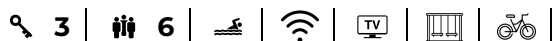


## LA BELLE ETABLE ★★★

La Chauvotte - 71990 LA GRANDE-VERRIERE  
[info@lachauvotte.eu](mailto:info@lachauvotte.eu)  
[www.lachauvotte.eu/](http://www.lachauvotte.eu/)



The gîte La Belle Étable is located in a part of the completely renovated barn and is designed for 6 people.

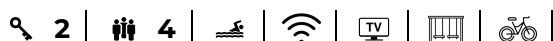


## LA BERGERIE ★★★

La Chauvotte - 71990 LA GRANDE-VERRIERE  
[www.lachauvotte.eu/](http://www.lachauvotte.eu/)



The gîte La Bergerie is located in a part of the barn which has been completely renovated and is suitable for a family of 5 people or 2 couples with its two bedrooms each with its own bathroom.



## GITE DE LA BERGERIE

Saussey du Bas - 71990 LA GRANDE-VERRIERE



, This spacious gîte, with its carefully designed "vintage" decoration, is a great place to relax. "La Bergerie" recently converted into a gîte, combines all the assets for a very pleasant stay in the Morvan Natural Park, a paradise for hikers. Not only does it offer an unobstructed view of the surrounding rolling meadows and forests, but it is also only fifteen kilometres from Autun, a town of Art and History, and forty kilometres from the most prestigious vineyards of Burgundy. This spacious gîte, with a very neat "vintage" decoration,



## LA REVENUE

Lieu-dit La Revenue - 71190 LAIZY



, Spacious country gîte to stay in Morvan, near Autun, Burgundy. Authentic, calm, nature and greenery. , A very spacious place to stay in the Morvan, near Autun in Burgundy. 1 x 90cm shower, WC, washbasin per bedroom. Authentic, calm, nature and gree... Spacious country gîte to stay in Morvan, near Autun, Burgundy. Authentic, calm, nature and greenery.



# Gîtes and furnished accommodation



## HUIN ISABELLE

Le Moulin - 71400 LA PETITE-VERRIERE

url vide

15 min of Autun, in the natural Regional Park of Morvan, attached to the House of the owners, this House can accommodate up to 5 people. The entrance is on the 1st floor, by the private terrace of the House: kitchen (Refrigerator table-top, combi microwave / oven, dishwasher, plates, gas, etc.) with space meal (TV), 1 room with bed 160cm (severable into 2 beds 80cm), shower room and wc. On the 2nd floor: living room with flat screen TV, DVD player and sofa convertible 130cm (for 1 extra person),...



## GITES LA MAISON DU CHATEAU

Domaine de Trélague - 71190 LA TAGNIERE

, Set in lush, green grounds, Château de Trélague boasts 10 hectares of delicately romantic parkland with ponds, woods and meadows grazed by Charolais cows... Swimming pool and tennis court, walks and angling, cultural visits and gastronomy... there are plenty of activities on offer to ensure you have an excellent stay! The gîte is located opposite the château and has all the amenities, making it ideal for families and groups of friends. Independent gîte for 8 people, 4 bedrooms, 2 bathrooms, one shower room, double living room.

### Rates

One person  
(Chambres d'hôtes) :  
80 € - 120 €

Two people  
(Chambres d'hôtes) :  
180 € - 300 € Per  
week low season :  
850 €, Per week high  
season : 1800 € -  
1850 €



## LE REV'TERRE, PETITE TANIÈRE BLANCHE

Les Tailles - 71190 LA TAGNIERE

- mcp07310@gmail.com

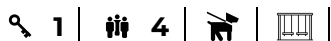
[www.lapetitetanieredeloups.site/w.fr/](http://www.lapetitetanieredeloups.site/w.fr/)

, Mini elf house, to dream under the stars of the Morvan. Furnished organic (lime, hemp) mini-home for up to 4 people, comprising a small white grotto bedroom with colourful volutes and a mini-lounge with wood-burning stove and cushions that can be converted into an extra bed. The ranch is shared with guests in the neighbouring yurt: - the sheltered, fully-equipped outdoor kitchen. - the sheltered outdoor lounge with games/library/local crafts area - the cabin shower



### Rates

Per week high season



## MAISON MAJORELLE AVEC PISCINE, MORVAN ★★★★★

22 Route de Saulieu - 71540 LUCENAY-L'EVEQUE

patrice.roy2@gmail.com

Magnificent house in the Parc du Morvan with swimming pool. Our large house welcomes families for a nature break in the Morvan Park. The terrace overlooking the swimming pool will offer you unique moments with your loved ones. The large lounge with its table for 10 will allow adults and children to get together for moments of sharing, laughter and joy. The night area with 5 bedrooms: king size beds (1) queen size (2) 2 adults/teenagers single (1) 2 children (1) This house of

url vide

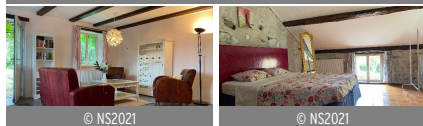




# Gîtes and furnished accommodation



© NS2021



© NS2021

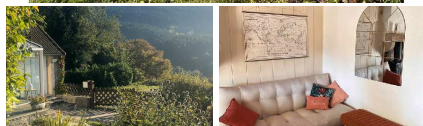
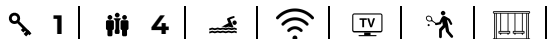
© NS2021

## VILLA MORTAISE GITES - GITE CLEMATITE

31 Route de Saulieu - 71540 LUCENAY-L'EVEQUE

[info@villamortaise.com](mailto:info@villamortaise.com)

On the walled estate of the former Villa Mortaise with swimming pool, we rent two holiday houses - gîtes - in Lucenay - L'Évêque, on the edge of the Morvan nature reserve in Burgundy. , Holiday home Clématite: recently renovated for up to 4 persons with a sleeping area Villa Mortaise Gites: Small-scale and personal, pet-friendly A 19th century Maison de Maître with garden and outbuildings, renovated to contemporary standards. You can choose from two holiday



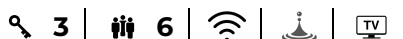
## LE KARADOK'INN SPA

1201 Les Vignes - 71190 MESVRES

[www.karadokinn.fr/hebergements/le-karadok-inn-spa.html](http://www.karadokinn.fr/hebergements/le-karadok-inn-spa.html)



, Aline welcomes you to the Karadok'Inn Spa, a small cottage for 4/6 people, lost in the middle of the meadows of the Grand Karadok farm. The outdoor spa with views over the Morvan offers a relaxing change of scenery. The house has been renovated to create a cosy atmosphere, with a veranda, 3 bedrooms (one independent), a library, office area (fibre optic) and a sheltered terrace with petanque area, barbecue and garden furniture. Visits to the farm by appointment. Bed linen and towels provided. , Cottage in the middle of the farm's



## LA CHAMBRE DE LEONIE

15 Route de la Chapelle - 71190 MESVRES

-

url vide

At the gates of the Morvan, in a very bright house with a pleasant wooded garden, with swimming pool, playground for children and petanque ground. This studio of 20 m² with kitchenette, WC and separate bathroom, "La Chambre de Léonie" is located on the ground floor of the owners' house.

### Rates

One night (apartment) Per week high season



## LA LOGE - REFUGE DE JULES ★★

15 Route de la Chapelle - 71190 MESVRES

- [bernard.tourneau@orange.fr](mailto:bernard.tourneau@orange.fr)

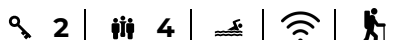
[www.gite-bourgogne-nature.com/](http://www.gite-bourgogne-nature.com/)



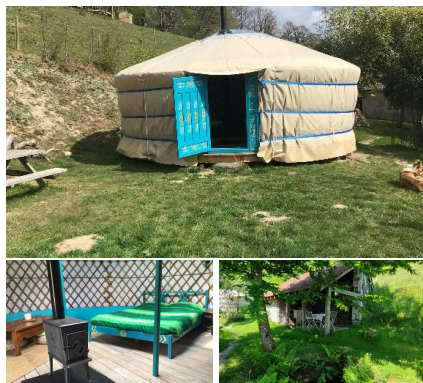
, The 62m2 gite is located on the ground floor of the house. Gites de France 2 épis label. Gîte located on the ground floor of the owner's house, in a hamlet towards Uchon. Raised entrance with terrace: living room with dining area and lounge (sofas, TV), fitted kitchen. 2 bedrooms (1 double bed, 2 single beds), bathroom (shower), separate WC. Laundry room. Courtyard, patio. Wireless. Private swimming pool to share with the owners, open from June 1 to September 30 (access from 9 a.m. to 7 p.m.). Baby equipment available. Gas central

### Rates

Per week low season : 380 €, Per week high season : 520 €  
Per week middle season : 440 €



# Gîtes and furnished accommodation



## MORVAN INSOLITE

Bois de Montboeuf - 71190 MESVRES

url vide

### Rates

One night  
(apartment)

Yurt on a quiet meadow facing the Massif d'Uchon.

1 | 4



## BELLE VUE DES ANGLES

1091 Route des Angles - 71190 MESVRES

[webiteo-71-V4-](http://webiteo-71-V4-)

[francois.glitea.fr/reso/etape1.php?](http://francois.glitea.fr/reso/etape1.php?)

[NUM=1977&INSTANCE=gites71&OPE=CRTBOU](http://NUM=1977&INSTANCE=gites71&OPE=CRTBOU)



Charming authentic 19th century character stable in local stone steeped in history (once an outbuilding of an agricultural estate), carefully restored "in the shade" of a century-old oak tree on a superb enclosed lawned property of 5700m, open to the surrounding countryside, offering a small orchard and a beautiful swimming pool (5x10m). In the heart of a small, very quiet rural hamlet nestled on the southern hillside facing the foothills of the southern slopes of the

### Rates

Per week low season :  
410 €, Per week high  
season : 510 €  
Per week middle  
season : 460 €



1 | 2 | | | |



## GITE DES OUCHES ★★

Les Ouches - 71190 MESVRES

url vide

### Rates

Per week low season :  
480 €, Per week high  
season : 620 €  
Per week middle  
season : 550 €



Single storey house in the same building as the owner. Ground floor: kitchen, living room, 2 bedrooms: 2 single beds / 2 single beds and 1 140cm sofa bed. Bathroom. Electric heating. Television socket. Enclosed courtyard. Swimming pool 4 km, 4x4 center 10 km. Free flight. Hiking and mountain biking. Kayak 4 km. Bike park 1 km. The cottage is located near a busy road. WIFI connection.

2 | 4 | | | |



## GITE L'ÉCHAPPEE NATURELLE 18 PERSONNES

Le Tronchet - 71190 MESVRES

url vide



The property is located on the edge of the Morvan Natural Park, at an altitude of 580 m, Gallo-Roman villages steeped in history and Autun. On the spot, there are many walks (Celtic way, path), mountain biking (great crossing of the Morvan), and fishing opportunities in the pond.

4 | 18 | | | |



# Gîtes and furnished accommodation



## COTE JARDIN

9 Rue de la Briere - 71360 MORLET

-  
webiteo-71-V4-  
francois.glitea.fr/reso/etape1.php?  
NUM=1996&INSTANCE=gites71&OPE=CRTBOU

Comfortable cottage nestled in the old stables, revisited of an authentic Burgundian farmhouse typical of the 19th century, steeped in history and fully restored with care. Quiet environment in the green countryside of Autun, in the heart of a peaceful & picturesque small rural hamlet - residential & agricultural - magnified by a majestic 15th century medieval fortified castle enthroned in its center (Château de Morlet)



### Rates

Per week low season :  
480 €, Per week high  
season : 630 €  
Per week middle  
season : 510 €



2 | 4 | | | |



## LA GUINGUETTE

2971 Route d'Autun - 71540 RECLESNE  
+33 3 85 29 55 60 - info@gites71.com

Ghislaine & Christian welcome you to an "eighties" country house (1980s) located in the heart of the Morvandelle Autun countryside on the foothills of the Morvan massif, 1 km from the center of the typical small town of Reclesne, on a property an unusual "micro-farm" rich in many animals (sheep, goats, ducks, chickens, rabbits, a cow and a donkey... / located at the back of the property) as well as the premises of the family roofing business - cladding now operated by their son (offices &...

url vide

### Rates

Per week low season :  
350 €, Per week high  
season : 390 €  
Per week middle  
season : 350 €



3 | 6 | | | |

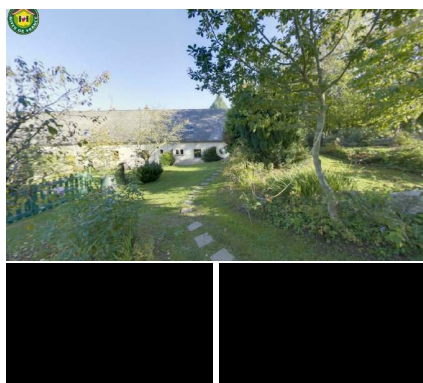


## LA GUINGUETTE

2971 Route d'Autun - 71540 RECLESNE

Furnished in the countryside between Lac des Settons and Autun

3 | 6 | | | |



## ART ET NATURE

4 Rue du Château - 71550 ROUSSILLON-EN-MORVAN  
- info@gites71.com

, Belgian by birth and Morvan by adoption, Peter is a renowned contemporary metal sculptor (workshop and monumental works to admire on site). Originally Belgians and adopted Morvandeaux, Peter, a renowned contemporary metal sculptor (workshop and monumental works to admire on site) and his wife Lore welcome you to a 16th century country farm which has been fully restored & loaded with history (former agricultural dependency of the Roussillon castle), in the heart of a small hamlet nestled on the old Roman road, on the edge

url vide

### Rates

Per week low season :  
345 €, Per week high  
season : 520 €  
Per week middle  
season : 380 €



3 | 6 | | | |

# Gîtes and furnished accommodation



## CHATEAU DU POMMOY

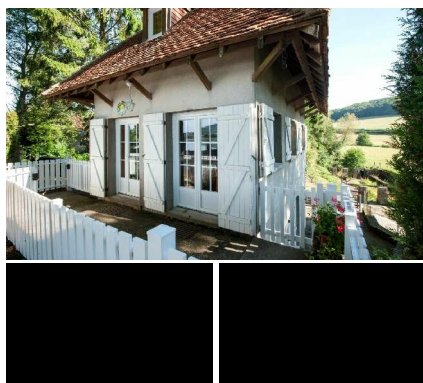
10 Rue des Meillerants - 71550 ROUSSILLON-EN-MORVAN

[www.chateaudupommoy.com/fr/](http://www.chateaudupommoy.com/fr/)

Castle located in the south of the Morvan Regional Natural Park, in an ideal setting.



7 | 20



## GITE DE BOUSSON

1666 Route de la Gare - 71190 SAINT-DIDIER-SUR-ARROUX

- [webiteo-71-V4-francois.glitea.fr/reso/etape1.php?NUM=450&INSTANCE=gites71&OPE=CRTBOUF](http://webiteo-71-V4-francois.glitea.fr/reso/etape1.php?NUM=450&INSTANCE=gites71&OPE=CRTBOUF)

A delightful, authentic fisherman's cottage dating from the early 20th century (owned by the inter-communal syndicate) nestling in a peaceful setting on the edge of meadows. Lovely authentic fishermen's house dating from the beginning of the 20th century (belonging to the intercommunal syndicate) nestled in peace on the edge of meadows (with the peaceful

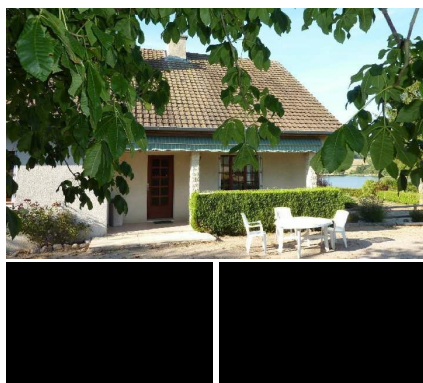


### Rates

Per week low season : 380 €, Per week high season : 493 €  
Per week middle season : 427 €



2 | 4



## LE CHAMP DES CHARMES ★★

Le Champ des Charmes - 71190 SAINT-DIDIER-SUR-ARROUX

- [lechampsdescharmes@orange.fr](mailto:lechampsdescharmes@orange.fr)

Comfortable "eighties" pavilion - largely renovated and revamped - nestled on an exposed hillside, leaning against a hill overlooking the vast and bucolic Bousson fishing pond (42 ha), a natural site classified for its wetland habitats and its wildlife & associated flora (ZNIEFF); fishing prohibited on site. In the heart of the Morvan countryside in a magnificent rural setting, on the edge of meadows and bocages, with the only neighbors being the famous Charolais grazing peacefully. Residential...

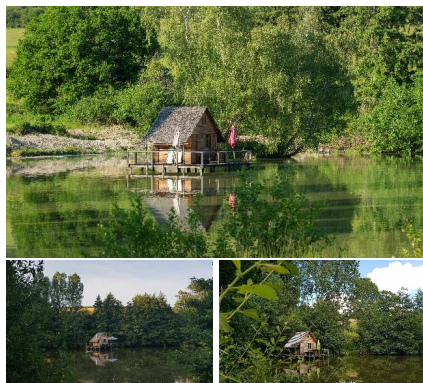
url vide

### Rates

Per week low season : 500 €, Per week high season : 600 €  
Per week middle season : 500 €



3 | 6



## CABANES SUR PILOTIS

Marolle - 71190 SAINT-DIDIER-SUR-ARROUX

url vide

, The cabins on stilts invite you to return to your roots. Take the time to cut yourself off from the world, without electricity or running water: recharge your batteries in an unusual cabin in the middle of a pond. Take your boat and go on an adventure! You will never see nature in the same way again... Back to the roots. Escape. Disconnection. Unusual. Nature. A change of scenery. Welcome to the cabins on stilts! The cabins on stilts invite you to return to your roots. Take the time to cut yourself off from the world, without electricity or



4 | 10



# Gîtes and furnished accommodation



4 | 8 | | | |

## LA GRANGE D'ERNEST ★★

10 Rue d'Epinac - 71490 SAINT-EMILAND  
+33 3 85 29 55 60 -

[webitea-71-V4-](http://webitea-71-V4-)

[francois.glitea.fr/reso/etape1.php?](http://francois.glitea.fr/reso/etape1.php?)

NUM=990&INSTANCE=gites71&OPE=CRTBOUF

Brigitte and Gilles welcome you to this old family barn, steeped in history, fully restored, in the heart of the village of Saint-Emiland. Take advantage of the commune's pond, located 700 m away, to indulge your passion as an amateur fisherman. Take a stroll through the village to admire some architectural wonders: the Gothic oratory and ancient sarcophagi in the cemetery: the stone of "Guenachère" and



### Rates

Per week low season : 490 €, Per week high season : 679 €  
Per week middle season : 579 €



2 | 4 | | | |

## LA MAURICOLETTE ★★

Le Pont de la Charbonnière - 71490 SAINT-EMILAND

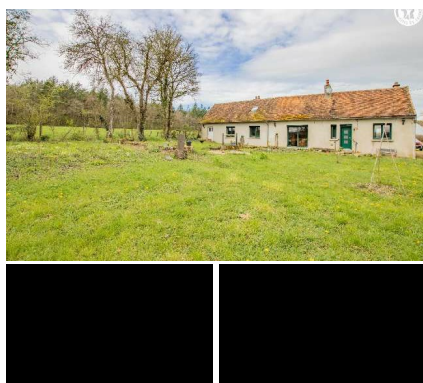
+33 3 85 29 55 60 -

Between Morvan and the Couchois vineyards, 35km from Beaune, this independent house has been completely renovated, while retaining its charm of yesteryear (beams, terracotta tiles, etc.). Ground floor: living room with fitted kitchen and dining room (stove-fireplace); 1 bedroom (double bed), shower room, WC Floor: living room (TV with TNT, sofa bed for 2 people), 1 bedroom (2 single beds), WC. Sheltered terrace (barbecue), enclosed garden 500m² with open view. Baby equipment on request....

url vide

### Rates

Per week low season : 310 €, Per week high season : 370 €  
Per week middle season : 330 €



2 | 4 | | | |

## REFUGE CAMPAGNARD

14 Chemin du Pont Allard - 71490 SAINT-EMILAND

+33 3 85 29 55 60 -

[webitea-71-V4-](http://webitea-71-V4-)

[francois.glitea.fr/reso/etape1.php?](http://francois.glitea.fr/reso/etape1.php?)

NUM=3218&INSTANCE=gites71&OPE=CRTBOUF

Dominique opens the doors of an authentic traditional country farmhouse from the end of the 19th century, with "old-world" charm (completely restored inside), nestled in a dead end on the confines of a mini rural hamlet, between Morvan & country Couchois, very close to the town center of the small, typical village of Saint-Emiland (with a listed



### Rates

Per week low season : 390 €, Per week high season : 450 €  
Per week middle season : 390 €



1 | 6 | | | |

## GITE L'ETANG DES SOAYS

13 Chemin d'Echarvy - 71490 SAINT-EMILAND

, Our l'étang des Soays gîte, a paradise for anglers and nature lovers, offers a unique escape. Take advantage of our private pond for a peaceful fishing experience and discover an unspoilt natural setting. Designed for comfort and tranquillity, our gîte is the perfect place to recharge your batteries. Whether you're alone, a couple or a family, enjoy an authentic and memorable experience, in harmony with nature. Discover our unique gîte l'étang des soays, with its private fishing pond - a haven of peace in the heart of nature. Welcome to our gîte

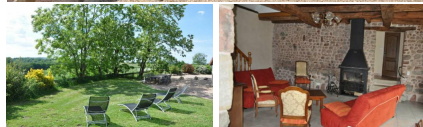
url vide

### Rates

Week (appartement) : 700 € - 800 €



# Gîtes and furnished accommodation



## LA ROSE DES PRES ★★★

Les Garreauds - 71320 SAINT-EUGENE  
[larosedespres@laposte.net](mailto:larosedespres@laposte.net)

url vide

Catherine and François welcome you to this old farmhouse, renovated in the tradition and with all comfort. This large independent house offers you the superb hilly landscapes of the Morvan, total tranquility and proximity to many tourist sites. You can, if you wish, discover the daily activities of the farm in organic farming (see photos on the website) and taste organic products: vegetables, fruits, jams, soups, terrines, meats .... Ground floor: large living room with fitted kitchen open to...

### Rates

Per week low season : 890 €, Per week high season : 1050 €  
 Per week middle season : 890 €



4 | 9 |



## LA FERME DE MILLERY ★★★

3478 Route du bois Doré - 71400 SAINT-FORGEOT  
 +33 3 85 86 16 51 - [renaud.pat10@gmail.com](mailto:renaud.pat10@gmail.com)

Ideally situated just 5 minutes' drive from Autun and at the gateway to the Morvan nature park, you'll be charmed by the peacefulness of the setting. The recently renovated house sleeps 6. , Ideally located just 5 minutes' drive from Autun and at the gateway to the Morvan nature park, you'll be charmed by the peacefulness of the setting. Ideally located just 5 minutes' drive from Autun and at the gateway to the Morvan nature park, you'll be charmed by the peace and quiet of the area. A variety of activities are available nearby, including golf,

### Rates

One night (apartment) : 150 €

3 | 6 | TV |

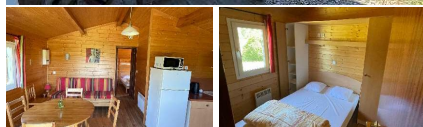


## LE BAT DE L'ANE ★★

Précelles - 71490 SAINT-JEAN-DE-TREZY  
 - [www.gite-bourgogne-sud.com](http://www.gite-bourgogne-sud.com)



2 | 6 | | | |



## CHALET OBELIX

Les Cours Basses - 71990 SAINT-LEGER-SOUS-BEUVRAY

- [www.chalets-gaulois.com](http://www.chalets-gaulois.com)



Escape the hustle and bustle of city life for a while, relax and enjoy the 'slow life'. A longer or shorter stay in the chalet will allow you to recharge your batteries. The chalet has a surface area of 35 m² plus a 6 m² covered terrace and can accommodate a maximum of 5 people. It is located right in the middle of the Morvan Regional Park. , Come and recharge your batteries in the middle of the Morvan Regional Park. The chalet is located in Saint-Léger-sous-Beuvray, a commune in

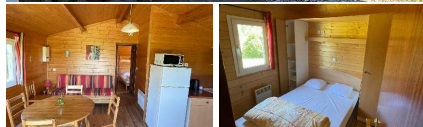
### Rates

One night (apartment) : 75 € - 100 €  
 Week (apartment) : 275 € - 450 €

2 | 5 |



# Gîtes and furnished accommodation



🔑 2 | 🛏 5 |

## CHALET ASTERIX

Les Cours Basses - 71990 SAINT-LEGER-SOUS-BEUVRAY

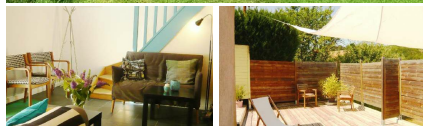
[www.chalets-gaulois.com](http://www.chalets-gaulois.com)

, Escape the hustle and bustle of city life for a while, relax and enjoy the 'slow life' right in the middle of the Morvan Regional Park. The chalet has a surface area of 35 m<sup>2</sup> plus a 6 m<sup>2</sup> covered terrace and can accommodate a maximum of 5 people. It comprises 2 bedrooms and a main room with kitchen, dining table and sofa. Bathroom and separate toilet. A large garden is at your disposal. , Come and recharge your batteries in the middle of the Morvan Regional Park. The



### Rates

One night  
(appartement) : 75 € -  
100 €  
Week (appartement) :  
275 € - 450 €



🔑 2 | 🛏 4 | 🐕 | 🚶 |

## LE PETIT AILLEURS

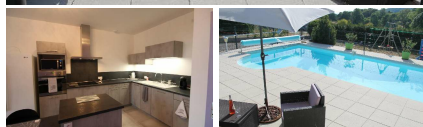
La Boutière - 71990 SAINT-LEGER-SOUS-BEUVRAY

German by origin & Morvandelle by adoption, multilingual guide-lecturer on the famous neighboring site of Bibracte, Christiane welcomes you to an authentic farmhouse in the late 19th century - fully restored in accordance with the rules of the art - in charge of history, formerly a regular resort of Antoine de Saint-Exupéry, close friend of a former owner photographer, who accompanied him in flight! Peaceful little residential hamlet, very quiet, in the hollow of a magnificent natural setting &...

url vide

### Rates

Per week low season :  
365 €, Per week high  
season : 480 €  
Per week middle  
season : 415 €



🔑 3 | 🛏 6 | 🐕 | 🚶 | 📶 | 🚶 |

## LA MEHLODIE ★★★

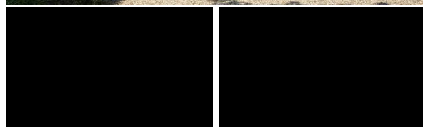
Le Bas du Bourg - 71990 SAINT-LEGER-SOUS-BEUVRAY

In a small village nestled in the heart of the Morvan Regional Natural Park, surrounded by woods, the Mehlodie gîte, completely renovated in 2016, will seduce you with its charm and comfort. Outside, the enclosed 360m<sup>2</sup> garden has a private swimming pool, a lawn area with a swing and slide, and a sheltered terrace with barbecue and darts. Inside, the decoration is soft and cozy, and the volumes are spacious for 6 to 8 people. Ground floor: fitted kitchen (ceramic hob, oven, American fridge,...

url vide

### Rates

Per week low season :  
500 €, Per week high  
season : 650 €  
Per week middle  
season : 550 €



🔑 4 | 🛏 8 | 🐕 | 🚶 | 📶 | 🚶 |

## GITE DU GUE ★★★

Le Gué - 71990 SAINT-LEGER-SOUS-BEUVRAY  
+33 3 85 29 55 60 -

Located in a quiet hamlet of the village, 20 km from Autun, this superb and spacious house, completely renovated and carefully decorated, is arranged on 2 levels. Ground floor: entrance opening onto the living room (convertible sofa for two additional beds, flat screen TV, DVD player, HIFI system), fitted and equipped kitchen open to the living room, bathroom with walk-in shower and bathtub and 'a separate toilet with washbasin. On the 1st floor are 4 bedrooms, all equipped with a flat screen...

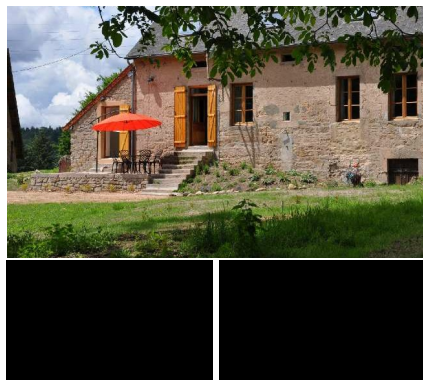
url vide

### Rates

Per week low season :  
800 €, Per week high  
season : 950 €  
Per week middle  
season : 850 €



# Gîtes and furnished accommodation



## LE HAUT DE MONTAUGE ★★★

Montaugé - 71990 SAINT-LEGER-SOUS-BEUVRAY

url vide

Spacious charming cottage in a carefully restored 19th century farmhouse, nestled in the countryside in the hollow of a large clearing, on the mountainside and at the edge of the forest. Absolute calm nestled in an ultra privileged preserved setting on the edge of a small hamlet nestled 3 km from the typical village of Saint-Léger-sous-Beuvray crossed by the GTMC (legendary mountain bike circuit). Within the Morvan Natural Park in an exceptional landscape setting literally enchanting, facing...

### Rates

Per week low season : 440 €, Per week high season : 575 €  
Per week middle season : 440 €



## L'ECURIE

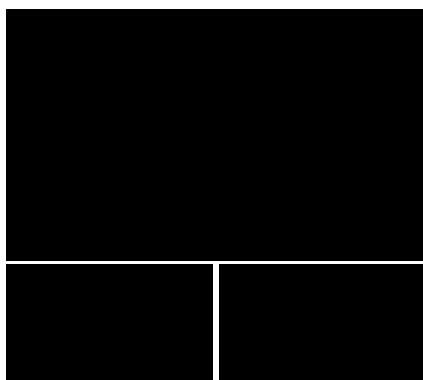
Les Granges de Corlon - 71990 SAINT-LEGER-SOUS-BEUVRAY

url vide

Patrick (a former high level mountaineer) and Marie-France, both passionate about nature, welcome you to an authentic Morvan farmhouse full of history from the beginning of the 18th century, entirely restored with care and taste. In the heart of a small rural hamlet overlooking a superb undulating plateau of hedged farmland on the edge of the forest (with the peaceful Charolais cattle as neighbours!), leaning against the southern hillside on the slopes of Mont-Beuvray, an exceptional belvedere...

### Rates

Per week low season : 450 €, Per week high season : 550 €  
Per week middle season : 500 €



## LA GRANGE A FOIN

Les Granges de Corlon - 71990 SAINT-LEGER-SOUS-BEUVRAY

+33 3 85 82 53 60 -

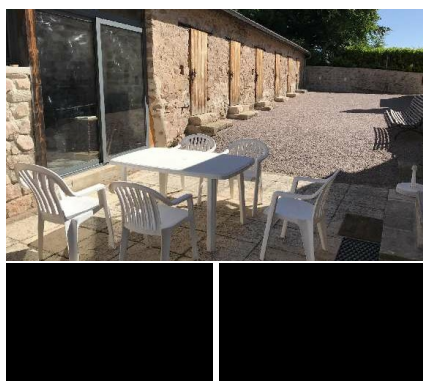
[lesgrangesdecorlon.com](http://lesgrangesdecorlon.com)



Patrick (a former high level mountaineer) and Marie-France, both passionate about nature, welcome you to an authentic Morvan farmhouse full of history from the beginning of the 18th century, carefully and tastefully restored in accordance with the rules of art. In the heart of a small rural hamlet overlooking a superb undulating plateau of hedged farmland on the edge of the forest (with the peaceful Charolais cattle as neighbours!), nestling on the southern hillside on the

### Rates

Per week low season : 750 €, Per week high season : 960 €  
Per week middle season : 850 €



## LA CHATAIGNERAIE ★★★

Le Bourg - 71990 SAINT-LEGER-SOUS-BEUVRAY

- [info@gites71.com](mailto:info@gites71.com)

[webiteo-71-V4-](http://webiteo-71-V4-)

[francois.glitea.fr/resa/etape1.php?](http://francois.glitea.fr/resa/etape1.php?)

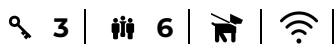
[NUM=1430&INSTANCE=gites71&OPE=CRTBOU](http://NUM=1430&INSTANCE=gites71&OPE=CRTBOU)



Lovely authentic 19th century country house, completely restored with care, located in the heart of the Morvan Natural Park in the heart of a peaceful little typical Morvan village & merchant leaning against the south-east hillside on the slopes of the famous Mont-Beuvray, exceptional belvedere culminating at 821m offering an extraordinary view (as far as

### Rates

Per week low season : 540 €, Per week high season : 600 €  
Per week middle season : 600 €





# Gîtes and furnished accommodation



## GITE DE LA BOUTIERE

13 Route de Saint-Prix - 71990 SAINT-LEGER-SOUS-BEUVRAY

url vide

Both passionate about hiking, Nathalie & Yves welcome you to a charming, carefully restored authentic 19th century Morvan farm, nestled peacefully in a small residential & agricultural hamlet, adjoining the heart of a picturesque, typical little village & merchant, nestled around a large central square with old-world charm. Magnificent environment of greenery & full nature, nestled in the hollow of a peaceful valley planted with meadows under the wooded ridges of the surrounding hills, on the...



🔑 2 | 🛏 4 | 📶 | 🚶 |

### Rates

Per week low season : 430 €, Per week high season : 480 €  
Per week middle season : 430 €



## SAINT-LEGER-SOUS-BEUVRAY

Patrick (former high-level mountaineer) & Marie-France, both nature lovers, welcome you in an authentic Morvandelle farmhouse full of character steeped in early 18th century history, fully restored in accordance with the rules of the art with care & taste. In a small rural hamlet overlooking a superb hilly plateau of bocage on the edge of the forest (with the peaceful Charolais as neighbors!), Leaning against the southern hillside on the slopes of Mont-Beuvray, exceptional belvedere...

🔑 1 | 🛏 4 |

### Rates

Per week low season : 400 €, Per week high season : 500 €  
Per week middle season : 450 €



## SAINT-LEGER-SOUS-BEUVRAY

Patrick (former high-level mountaineer) & Marie-France, both passionate about nature, welcome you to an authentic Morvandelle farmhouse full of character, steeped in early 18th century history, carefully restored with taste in accordance with the rules of the art. In a small rural hamlet overlooking a superb hilly plateau of bocage on the edge of the forest (with the peaceful Charolais as neighbors!), Nestled on the southern hillside on the slopes of Mont-Beuvray, exceptional belvedere...

🔑 4 | 🛏 8 |

### Rates

Per week low season : 700 €, Per week high season : 900 €  
Per week middle season : 800 €



## LA BONNE VIE

4, Nignolle - 71490 SAINT-MAURICE-LES-OUCHES

- [contact@camping-labonnevie.com](mailto:contact@camping-labonnevie.com)  
[www.camping-labonnevie.com](http://www.camping-labonnevie.com)



In the middle of nature in Burgundy, surrounded by vineyards and forests, lies our small campsite with pitches and rental accommodation. The area is very beautiful and can be visited by hiking and cycling. We are situated in the triangle Beaune - Chalon-sur-Saône - Autun (330 km from Paris). Ideal for family gatherings or club members.

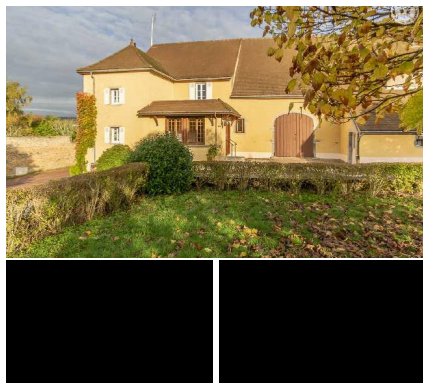
🔑 21 | 🛏 50 | 🚶 | 🚴 | 📶 | 📺 | 🏠 |

### Rates

Per week low season, Per week high season  
Per week middle season



# Gîtes and furnished accommodation



## LA VIGNE VIERGE

4 Rue des Champs Dessous - 71490 SAINT-MAURICE-LES-COUCHES

url vide

### Rates

Per week low season : 485 €, Per week high season : 685 €  
Per week middle season : 585 €



Professional winegrowers (family estate of "Clos Voyer" at 300m, operated for 4 generations, with an exceptional 16th century cellar / visit & tasting possible), Marie-Christine & Fabrice welcome you in an authentic winegrower's residence of character at the end of the 19th century completely restored in the rules of the art. In the countryside of Couch in the heart of a picturesque, typical, very peaceful, small wine-growing village, nestled in the hollow of a beautifully landscaped cirque,...



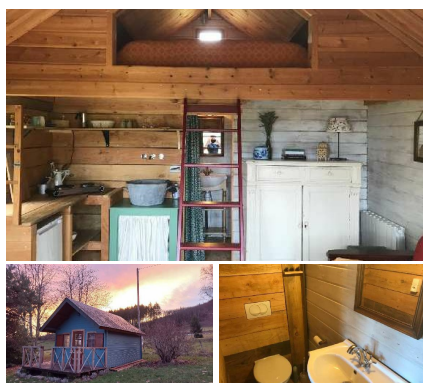
## LES PETITS GALETS ★★★

27 Rue de Corcelle - 71490 SAINT-MAURICE-LES-COUCHES

url vide



Large gîte in an outbuilding of a former wine estate. Covered outdoor space and garden. Large gîte in an outbuilding of a former wine estate. Covered outdoor space. All shops 3 km away. Large gîte in an outbuilding of a former wine estate. Enjoy a covered outdoor space overlooking a garden. All shops are nearby (3 km).



## CABANE AU BOIS DU HAUT FOLIN

8 La Grande Chaux - 71990 SAINT-PRIX  
[info@auboisduhautfolin.fr](mailto:info@auboisduhautfolin.fr)

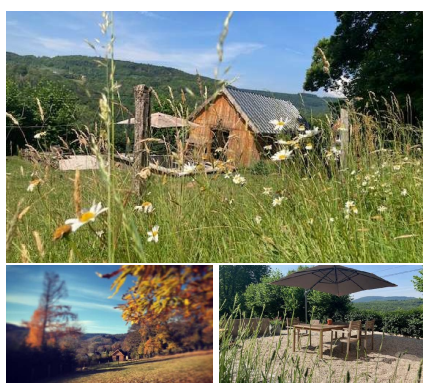
url vide

### Rates

One night (apartment) : 60 €



, The Cabane Au Bois Du Haut Folin is located on the edge of the forest at the foot of the mountain Le Haut Folin, the roof of Burgundy. The Cabane is in the heart of Burgundy and the Morvan Regional Nature Park. La Cabane bears the Regional Nature Park label. La Cabane is equipped to accommodate two people for several days or a single night. You can also pitch your own tent to accommodate up to five people. , La Cabane is a rustic retreat on the slopes of Haut Folin. It's an ideal base for exploring the Morvan Regional Nature Park. The



## CHALET AU BOIS DU HAUT FOLIN

8 Lieu-dit Chanson - 71990 SAINT-PRIX  
[www.auboisduhautfolin.fr](http://www.auboisduhautfolin.fr)



### Rates

One night (apartment) : 75 € - 100 €

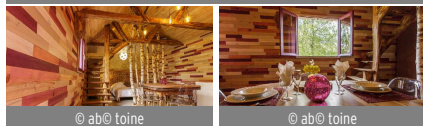
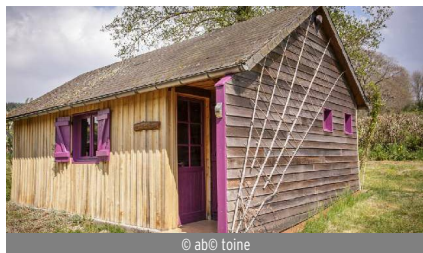


, The Chalet Au Bois Du Haut Folin is located on the edge of the forest at the foot of the Haut Folin mountain, the roof of Burgundy. The chalet is in the heart of Burgundy and the Morvan Regional Nature Park. The chalet bears the Valeur parc naturel régional mark. The chalet is equipped to accommodate two people for several days or just one night. A haven of peace with a south-facing terrace offering panoramic views of Mont Beuvray and a private garden. The town of Autun is 22 km away. Chalet Au Bois Du Haut Folin is a





# Gîtes and furnished accommodation



## CABANE MYRTILLE

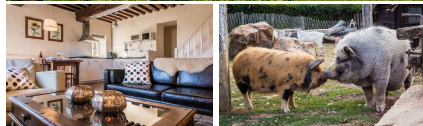
1 La Rivière - 71990 SAINT-PRIX

url vide



Completely revamped this winter 2021, using natural and recycled materials, it is equipped with a shower and a sink, as well as a separate toilet. The blueberry hut is located near the dining room and near the playground. It consists of a single room with a fitted kitchen, a double bed and a single bed on the mezzanine. Possibility to have meals served, made with fresh products, the recipes are local; but also vegetarian meals and even discovery of raw food meals Reconnection with nature in a...

1 | 3 |



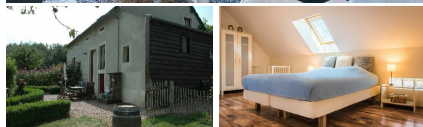
## LE MENHIR ★★★

Lieu dit La Boulas Bas 1-5 - 71990 SAINT-PRIX  
[morvanrustique.com/?lang=fr](http://morvanrustique.com/?lang=fr)



8 km from Haut-Folin, 5 km from the Bibracte Mont-Beuvray site and 20 km from the historic town of Autun. Arjan and Nancy welcome you in a large renovated gîte in a farmhouse with spacious bathroom, living room and kitchenette. Two large bedrooms upstairs. Central heating.

2 | 4 |



## GITE LES EDUENS ★★★

Lieu dit La Boulas Bas 1-5 - 71990 SAINT-PRIX

url vide



In the heart of the preserved nature of the Morvan Regional Natural Park, Arjan and Nancy welcome you. A gîte for 4 people with two spacious bedrooms, a living room with a beautiful fireplace and a breathtaking view of the hills of Saint-Prix. Spacious bathroom. Separate toilet. Central heating.

2 | 4 |



## GITE DARION ★★★

Lieux dit La Boulas Bas 1-5 - 71990 SAINT-PRIX

url vide



The Darion gîte is the left part of the wooden house (part 2/3). It's a holiday home, for 6 persons. This luxury gîte has a beautiful large fully equipped kitchen including a dishwasher. From the kitchen you have access to the terrace, where you can have breakfast in the morning sun or simply enjoy the beautiful view over the valley to Saint Prix en Morvan.

3 | 6 |

# Gîtes and furnished accommodation

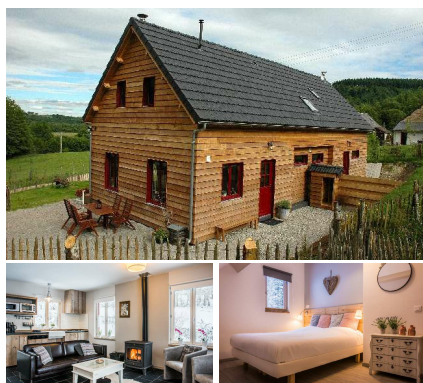
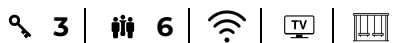


## GITE OBELIX ★★★

Lieu dit La Boulas Bas 1-5 - 71990 SAINT-PRIX  
[morvanrustique.com/?lang=fr](http://morvanrustique.com/?lang=fr)



In the stone barn we have converted our gîte Obelix. The Obelix is a spacious gîte with its own cosy atmosphere, suitable for 6 persons. The large living room is located in an old cowshed, the stone walls in combination with the authentic terracotta floor give it its special character.



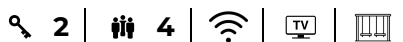
## GITE TARIN ★★★

Lieu dit La Boulas Bas 1-5 - 71990 SAINT-PRIX

url vide



The gîte Tarin is the right part of the new wooden house (part 1/3) and for 4 persons. The gîte Tarin is beautifully situated on the edge of the meadow deschevaux and next to the forest. You have a beautiful terrace on this side of the house with a view over the valley towards Saint Prix and the surrounding mountains.



## GITE RURAL "LUZULE"

1 La Rivière - 71990 SAINT-PRIX  
 +33 3 85 82 44 55 - [olivier.arcelus@orange.fr](mailto:olivier.arcelus@orange.fr)  
[www.gitedesfleurs.com](http://www.gitedesfleurs.com)



This chalet is installed on a wooded and landscaped ground and is named after a wild flower of the Morvan. Ideally located at the foot of the Haut Folin, between the largest site of Bibracte and the Gorges de la Canche. Ground floor: spacious living room (convertible lounge area for 2 people), equipped kitchen area (oven, gas hob, dishwasher, fridge and freezer), 2 bedrooms (1 double bed, 3 single beds including 2 bunk beds), shower room, toilet, washing machine. Electric heating. Covered...



## GITE RURAL "PERVENCHE"

1 LA RIVIERE - 71990 SAINT-PRIX  
 +33 3 85 82 44 55 -

url vide



Plants and flowers are the other passions of Olivier and Martine who manage a nursery. This chalet is decorated in blue like the periwinkle whose name it bears. It also benefits from a very beautiful, calm and peaceful environment. Ground floor: living room (convertible lounge area for 2 people), equipped kitchen area, 2 bedrooms (1 double bed 2 single bunk beds), shower room, wc. Electric heating. Covered terrace. Private pond (fishing equipment available). Snowshoes available for winter...





# Gîtes and furnished accommodation



## GITE RURAL "COMPAGNON ROUGE"

1 La Rivière - 71990 SAINT-PRIX

[www.gitedesfleurs.com](http://www.gitedesfleurs.com)



In the heart of the Morvan, this colourful chalet is set on a vast landscaped and wooded plot of land crossed by a small stream. Facing a chromatic garden where perennials, grasses and ivy grow. Each chalet is named after a flower. On the ground floor: spacious living room (convertible lounge area for 2 people), equipped kitchen area, 2 bedrooms (1 double bed, 3 single beds including 2 bunk beds), shower room, wc. Electric heating. Covered terrace. Private pond (fishing equipment available)....

🔑 2 | 🛏 5 | 🚿



## SAINT-PRIX

On the heights of the village, on the edge of the woods, the gîte "Ma Chanson" offers an exceptional panorama over the forests of the Morvan, since it is located in the heart of the Regional Natural Park. On an enclosed plot of 10,000m², from where you can directly reach the hiking trails, the house has a private swimming pool of 12m x 6m, open from June 15 to September 15 (longer depending on the weather), which seems throw itself into the valley. On the 1st floor: living room with lounge,...

### Rates

Per week low season : 400 €, Per week high season : 620 €  
Per week middle season : 500 €

🔑 3 | 🛏 6 | 🚿



## MEUBLE ASTERIX

La Boulas - 71990 SAINT-PRIX

In the commune of Saint-Prix, close to the Haut-Folin which culminates at 901 meters, Arjan and Nancy welcomes you in the heart of a preserved nature. The Asterix gîte is equipped with a large 35 m² living/bedroom room with a large stone fireplace and an authentic bread oven.



🛏 2 |



## CHANGEY D'AIR ★★

Changey - 71360 SAISY

- [flobidault@hotmail.fr](mailto:flobidault@hotmail.fr)

[webitea-71-V4-](http://webitea-71-V4-)

[francois.glitea.fr/reso/etape1.php?](http://francois.glitea.fr/reso/etape1.php?)

[NUM=477&INSTANCE=gites71&OPE=CRTBOUF](http://NUM=477&INSTANCE=gites71&OPE=CRTBOUF)



### Rates

Per week low season : 310 €, Per week high season : 420 €  
Per week middle season : 340 €

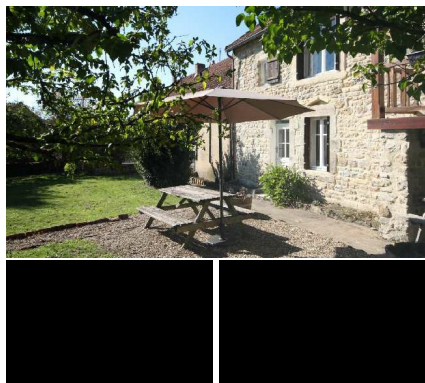


Renovated traditional country house located in the heart of a charming, very quiet, typical residential hamlet nestled in the countryside at the gateway to the Morvan natural park, 5 km from the greenway. Splendid country and natural setting preserved with very varied landscapes between fields, pastures, meadows and forests in very close proximity to the vineyards of the Marandes and the wine road. at the



🔑 3 | 🛏 6 | 🐕 | 📶 | 🚶

# Gîtes and furnished accommodation



## LA CHOUETTE CURIEUSE

4 Rue de Prêle - 71360 SAISY  
+33 3 85 29 55 60 -

url vide

Come and recharge your batteries in this old stone house completely refurbished, in the heart of the village of Saisy, a peaceful and relaxing village. The fish-rich river of La Miette, located 1 km away, will delight fishing enthusiasts. Stroll through the village to admire the 13th century Saint-Pierre church, its Gothic choir and columned bell tower. Do not miss the magnificent Château de Sully, open to the public and currently inhabited by the Duchess of Magenta and her children: a large...

### Rates

Per week low season : 880 €, Per week high season : 880 €  
Per week middle season : 780 €



5 | 11 | | | |



## GITE DE PRELE

3 Rue de Prêle - 71360 SAISY  
-

url vide

Authentic 19th century country house restored with care, located on the southern hillside, well exposed, in the heart of a charming, typical, quiet and very peaceful little village (13th century Saint-Pierre church listed as a Historic Monument on site), nestled equidistant from the two commercial towns of Épinac and Nolay (located 6 and 7.5 km / all shops and services on site). In the heart of the wine-growing countryside within a magnificent unspoiled rural and natural setting combining...

### Rates

Per week low season : 260 €, Per week high season : 320 €  
Per week middle season : 260 €



2 | 4 | | |



## GITE "LE RELAIS DE SOMMANT"

8 rue Estelle Nectoux - 71540 SOMMANT  
-

Non-labelled holiday or stopover gîte for two adults and a child aged between 5 and 10. Comfortable accommodation at a competitive price that can be adjusted each year (€65/night for 2024). Relaxation and a change of scenery guaranteed at low cost in the Morvan. A hiker's paradise! Gîte in a traditional Morvan house. Peace and quiet guaranteed. Individual, recently renovated premises located in the centre of the village of Sommant. Opposite the equestrian centre and Saint Martial church. Lake (1 km away), fishing and swimming

### Rates

One night (apartment) : 65 €  
Per week low season : 400 €, Per week high season : 450 €  
Per week middle season : 445 €



1 | 2 | | | |



## LE LOGIS DE MADELEINE

Frétoy - 71540 SOMMANT  
-

[webiteo-71-V4-francois.gliteo.fr/reso/etape1.php?NUM=854&INSTANCE=gites71&OPE=CRTBOUF](http://webiteo-71-V4-francois.gliteo.fr/reso/etape1.php?NUM=854&INSTANCE=gites71&OPE=CRTBOUF)



Fully restored detached house in the heart of the Morvan Regional Natural Park. Ground floor: kitchen and dining area, large living room with wood stove and terrace access. Bathroom, shower room, separate WC. Upstairs: 2 bedrooms (1 single bed, 2 double beds) and WC. Extra bed for 2 people. TV socket. Electric heating. Terrace and large enclosed grounds. Hiking, horse riding nearby. Telephone in the gîte:

### Rates

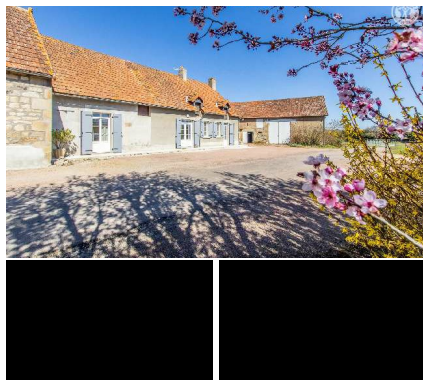
Per week low season : 275 €, Per week high season : 475 €  
Per week middle season : 350 €



2 | 5 | | |



# Gîtes and furnished accommodation



## CHEZ LA MONETTE

104 Route du Haut Puits - 71360 SULLY  
- [info@gites71.com](mailto:info@gites71.com)

url vide

A delightful Morvan farmhouse dating from 1819, steeped in history ("family home" since time immemorial, having once housed the village bistro), carefully revisited in accordance with the rules of the art, as a comfortable holiday home. In the middle of the Autun countryside, in the heart of a small rural hamlet nestling on the edge of the bocage (where peaceful Charolais cows graze in season) & a small meadow with a few sheep & Adèle, the owners' donkey, 2 km from the majestic 16th...

### Rates

Per week low season : 420 €, Per week high season : 560 €  
Per week middle season : 480 €



3 | 6 | | |



## SULLY

Lovely Morvandelle farm from 1819 steeped in history ("family house" since always, having once housed the village bistro), carefully revisited in the rules of the art, in a comfortable holiday resort. In the heart of the Autun countryside, in the heart of a small rural hamlet nestled on the immediate edge of the bocage (where peaceful Charolais cows graze in season) & a mini meadow with a few sheep & Adèle, the owners' donkey, 2 km the majestic 16th century Château de Sully (classified MH), one...

### Rates

Per week low season : 350 €, Per week high season : 500 €  
Per week middle season : 250 € - 420 €

3 | 6 | | |



## LES MONGINS

Les Mongins - 71400 TAVERNAY  
- [yachobert@wanadoo.fr](mailto:yachobert@wanadoo.fr)  
[www.ifrance.com/legitedesmongins](http://www.ifrance.com/legitedesmongins)



Vast Morvan farm, near the owner, a few kilometers from Autun and the Parc du Morvan and 1 hour from the vineyards. Ground floor: living room with integrated kitchen area. Shower room, WC. Floor: living room (sofa bed for 2 people, DVD player). 5 bedrooms (2 double beds, 6 single beds). Bathroom with bath, WC. Game room. (HiFi, video, DVD, game consoles, books ...). Electric heating. Large land. Open terrace upstairs. 2 televisions, DVD players, amplifier. Barbecue, ping-pong table, outdoor...

### Rates

Per week low season : 650 €, Per week high season : 850 €  
Per week middle season : 720 €



5 | 10 | | |



## LE CHAMP MIGNOT ★★★

11 Chemin de la Pièce Mignot - 71400 TAVERNAY  
[gillesmic@orange.fr](mailto:gillesmic@orange.fr)

url vide

House with courtyard and private garden, situated on the edge of a wood with a lovely view over Autun. Le Relais du Champ Mignot is a family house transformed into a furnished tourist accommodation. Situated on the edge of a wood, it has a garden and a private courtyard where you can have your meals in the open air in complete tranquillity. A closed garage is available for motorcyclists and cyclists. We welcome you in a rural environment with a beautiful view of the Eduenne town.

2 | 6 | | |

# Gîtes and furnished accommodation



## LA MAISON DU LAC

Les Baudurettes - 71190 THIL-SUR-ARROUX

url vide

### Rates

Per week low season : 550 €, Per week high season : 620 €  
Per week middle season : 550 €



, With its exceptional location, this "Maison du lac" is a comfortable contemporary villa nestled on the edge of fields and meadows on the banks of a delightful little bucolic lake where you can swim (unsupervised), have fun (city stadium and children's playground) and fish (carp, roach, tench, pike / real fishing boat with carriage available free of charge). Endowed with an income from an exceptional location, this "Lake House", which could not be better named, is a comfortable contemporary villa nestled on the edge of fields &

3 | 6 | | |



## GITE SAINT-ROCH

Saint-Roch Vauvillard - 71190 UCHON

+33 9 87 88 72 91 -



South of the Morvan regional park, large building in the woods. At 200 meters from a pond, calm guaranteed, multiple activities for sportsmen or not. Numerous hiking trails, harnessing, mountain biking, paragliding. Gastronomic inns nearby.

4 | 10 | | TV | | |





# Hosts

If you see any errors in the data displayed on this brochure concerning your accommodation

## **Go to Décibelles Data!**

Connect to your pro extranet and modify your data.



# Visitors

Did you know that your Tourist Office offers a range of activities?

**Storytelling, free audio guides, treasure hunts, board games, summer visits, summer walks, etc.**

Go to our website, check out the activities to do, the agenda page, the tourist office page and the ticketing.





**CITY GAME**  
LARCHEdUTEMPS.COM

STONE OF KNOWLEDGE  
STEINS  
DES WISSENS  
STEEN  
DER WIJSHEID

LE JEU DE PISTE D'AUTUN  
DISPONIBLE À L'OFFICE DE TOURISME - RÉSERVEZ ICI :

**Autun Morvan**  
Cœur de Bourgogne

**Autun Morvan**  
Cœur de Bourgogne

# BURGANDIAN TALES

NARRATIVE WALKS IN  
UCHON COUCHES ÉPINAC

6 € adults / 2 € children from 6 to 12  
Find out more: 33 (0)3 85 86 80 38  
Bookings on the Tourist Office website



## LET'S GO TO DISCOVER THE GRAND AUTUNOIS MORVAN

Take advantage of audio-guided and geolocated tours to discover our cultural wealth.



1. Download the Wivisites app
2. Scan the QR code
3. Start your tour !

**Wivisites**

**Autun Morvan**  
Cœur de Bourgogne

jeanmarcschwartz

**Autun Morvan**  
Cœur de Bourgogne

# MONSTER HUNT

Paper chase  
- family friendly -

Available at  
AUTUN MORVAN TOURISME  
(Tourism Information Office)  
13, Général Demetz street  
Autun

Game Kit Rental: 10€  
Find out more: +33 (0)3 85 86 80 38

Chasse Trésor